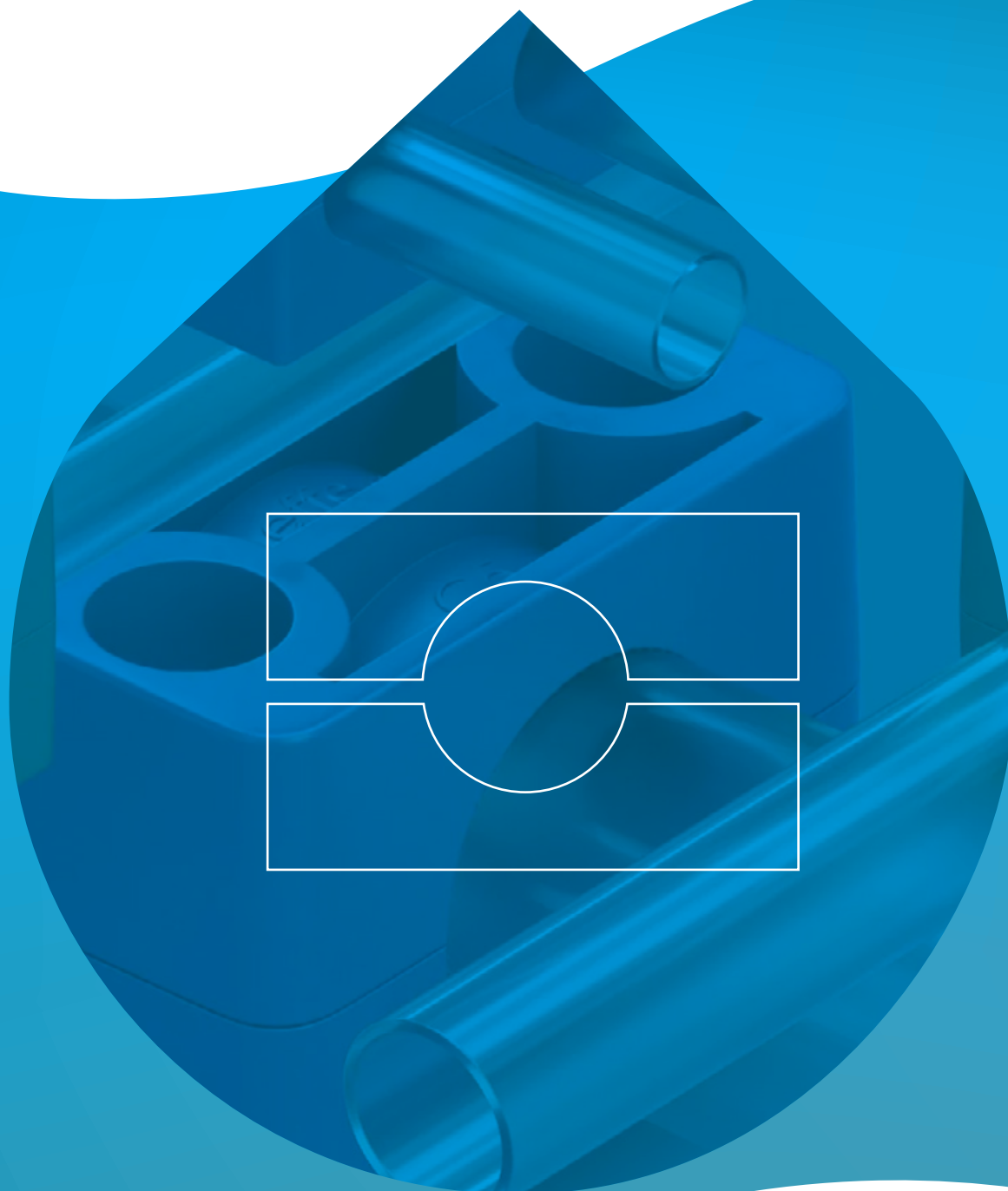


Pipe Clamp

Standard Series
DIN 3015-1

pieffeci.

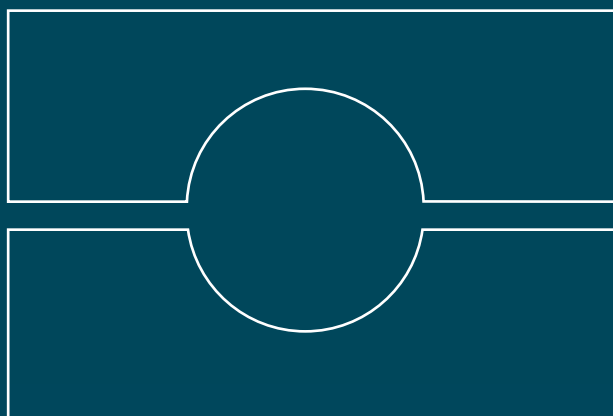


Standard Series Clamps Catalogue

01

DIN 3015-1

Standard Series Clamps Catalogue



Material

Standard Series Clamps Catalogue

Clamp body standard materials

- Polypropylene (PP): Blue
- Polyamide (PA): Black
- Rubber Elastomer (GM): Black
- Self-extinguishing Polypropylene (PPSE): White
- Aluminium (AL): Natural (C1 ÷ C7)

Different diameters and materials available on request.

Clamp body internal surface:

- knurled (C1 ÷ C7)
- profiled (C8 ÷ C9, C1-**-AL ÷ C7-**-AL, C6Q, C7C, C4TG ÷ C6TG)
- smooth (C1 L ÷ C9 L)

Components and accessories standard materials

- Steel S 235 JR raw (M1)
- Steel S 235 JR phosphated (M2)
- Steel S 235 JR galvanised (M3)
- Steel S 235 JR zinc-nickel plated (M4)
- Stainless steel AISI 316L (M6)

Metric thread: code M.

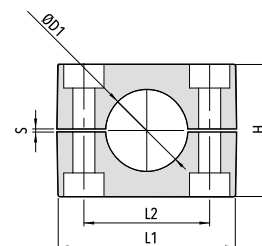
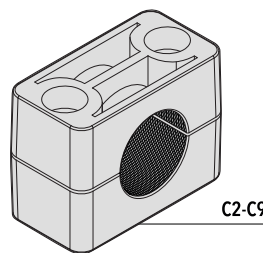
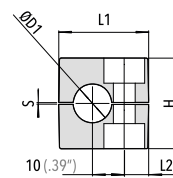
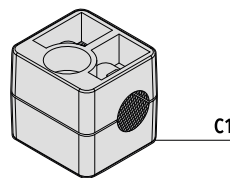
UNC thread: code UNC.

For material characteristics, see **Technical Appendix** at page 182.

Pipe Clamps Standard Series DIN 3015-1

C Clamp Body

Coppia di semicollari
Two clamps halves
Parejas de medias abrazaderas



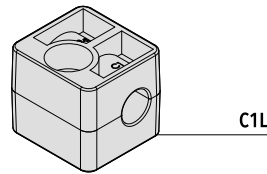
| Code | Outside diameter ØD1 | | Nominal bore pipe (in) | L1 (mm/in) | L2 (mm/in) | H (mm/in) | S (mm/in) | Width (mm/in) |
|-------------|----------------------|-------|---------------------------|---------------|---------------|---------------|---------------|------------------|
| | (mm) | (in) | | | | | | |
| C1-006-PP | 6 | | | 28 (1.10") | 9,5 (.37") | 27 (1.06") | 0,6 (.02") | 30 (1.18") |
| C1-006.4-PP | 6,4 | 1/4" | | 28 (1.10") | 9,5 (.37") | 27 (1.06") | 0,6 (.02") | 30 (1.18") |
| C1-008-PP | 8 | 5/16" | | 28 (1.10") | 9,5 (.37") | 27 (1.06") | 0,6 (.02") | 30 (1.18") |
| C1-009.5-PP | 9,5 | 3/8" | | 28 (1.10") | 9,5 (.37") | 27 (1.06") | 0,6 (.02") | 30 (1.18") |
| C1-010-PP | 10 | | 1/8" | 28 (1.10") | 9,5 (.37") | 27 (1.06") | 0,6 (.02") | 30 (1.18") |
| C1-012-PP | 12 | | | 28 (1.10") | 9,5 (.37") | 27 (1.06") | 0,6 (.02") | 30 (1.18") |
| C1-012.7-PP | 12,7 | 1/2" | | 28 (1.10") | 9,5 (.37") | 27 (1.06") | 0,6 (.02") | 30 (1.18") |
| C2-006-PP | 6 | | | 37 (1.46") | 20 (.79") | 27 (1.06") | 0,6 (.02") | 30 (1.18") |
| C2-006.4-PP | 6,4 | 1/4" | | 37 (1.46") | 20 (.79") | 27 (1.06") | 0,6 (.02") | 30 (1.18") |
| C2-008-PP | 8 | 5/16" | | 37 (1.46") | 20 (.79") | 27 (1.06") | 0,6 (.02") | 30 (1.18") |
| C2-009.5-PP | 9,5 | 3/8" | | 37 (1.46") | 20 (.79") | 27 (1.06") | 0,6 (.02") | 30 (1.18") |
| C2-010-PP | 10 | | 1/8" | 37 (1.46") | 20 (.79") | 27 (1.06") | 0,6 (.02") | 30 (1.18") |
| C2-012-PP | 12 | | | 37 (1.46") | 20 (.79") | 27 (1.06") | 0,6 (.02") | 30 (1.18") |
| C2-012.7-PP | 12,7 | 1/2" | | 37 (1.46") | 20 (.79") | 27 (1.06") | 0,6 (.02") | 30 (1.18") |
| C3-012.7-PP | 12,7 | 1/2" | | 42 (1.65") | 26 (1.02") | 33 (1.30") | 0,8 (.03") | 30 (1.18") |
| C3-013.5-PP | 13,5 | | 1/4" | 42 (1.65") | 26 (1.02") | 33 (1.30") | 0,8 (.03") | 30 (1.18") |
| C3-014-PP | 14 | | | 42 (1.65") | 26 (1.02") | 33 (1.30") | 0,8 (.03") | 30 (1.18") |
| C3-015-PP | 15 | | | 42 (1.65") | 26 (1.02") | 33 (1.30") | 0,8 (.03") | 30 (1.18") |
| C3-016-PP | 16 | 5/8" | | 42 (1.65") | 26 (1.02") | 33 (1.30") | 0,8 (.03") | 30 (1.18") |
| C3-017.2-PP | 17,2 | | 3/8" | 42 (1.65") | 26 (1.02") | 33 (1.30") | 0,8 (.03") | 30 (1.18") |
| C3-018-PP | 18 | | | 42 (1.65") | 26 (1.02") | 33 (1.30") | 0,8 (.03") | 30 (1.18") |
| C4-019-PP | 19 | 3/4" | | 50 (1.97") | 33 (1.30") | 36 (1.42") | 0,8 (.03") | 30 (1.18") |
| C4-020-PP | 20 | | | 50 (1.97") | 33 (1.30") | 36 (1.42") | 0,8 (.03") | 30 (1.18") |
| C4-021.3-PP | 21,3 | | 1/2" | 50 (1.97") | 33 (1.30") | 36 (1.42") | 0,8 (.03") | 30 (1.18") |

Pipe Clamps Standard Series DIN 3015-1

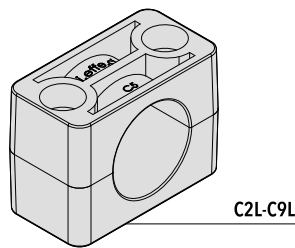
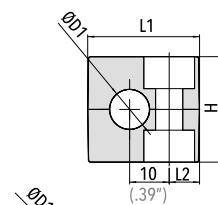
| Code | Outside diameter ØD1 | | Nominal bore pipe (in) | L1 (mm/in) | L2 (mm/in) | H (mm/in) | S (mm/in) | Width (mm/in) |
|-------------|----------------------|--------|---------------------------|----------------|----------------|----------------|---------------|------------------|
| | (mm) | (in) | | | | | | |
| C4-022-PP | 22 | 7/8" | | 50 (1.97") | 33 (1.30") | 36 (1.42") | 0,8 (.03") | 30 (1.18") |
| C4-023-PP | 23 | | | 50 (1.97") | 33 (1.30") | 36 (1.42") | 0,8 (.03") | 30 (1.18") |
| C4-025-PP | 25 | | | 50 (1.97") | 33 (1.30") | 36 (1.42") | 0,8 (.03") | 30 (1.18") |
| C4-025.4-PP | 25,4 | 1" | | 50 (1.97") | 33 (1.30") | 36 (1.42") | 0,8 (.03") | 30 (1.18") |
| C5-026.9-PP | 26,9 | | 3/4" | 57 (2.24") | 40 (1.57") | 42 (1.65") | 1 (.04") | 30 (1.18") |
| C5-028-PP | 28 | | | 57 (2.24") | 40 (1.57") | 42 (1.65") | 1 (.04") | 30 (1.18") |
| C5-029-PP | 29 | | | 57 (2.24") | 40 (1.57") | 42 (1.65") | 1 (.04") | 30 (1.18") |
| C5-030-PP | 30 | | | 57 (2.24") | 40 (1.57") | 42 (1.65") | 1 (.04") | 30 (1.18") |
| C5-032-PP | 32 | 1.1/4" | | 57 (2.24") | 40 (1.57") | 42 (1.65") | 1 (.04") | 30 (1.18") |
| C6-032-PP | 32 | 1.1/4" | | 71 (2.80") | 52 (2.05") | 58 (2.28") | 1,4 (.05") | 30 (1.18") |
| C6-033.7-PP | 33,7 | | 1" | 71 (2.80") | 52 (2.05") | 58 (2.28") | 1,4 (.05") | 30 (1.18") |
| C6-035-PP | 35 | | | 71 (2.80") | 52 (2.05") | 58 (2.28") | 1,4 (.05") | 30 (1.18") |
| C6-038-PP | 38 | 1.1/2" | | 71 (2.80") | 52 (2.05") | 58 (2.28") | 1,4 (.05") | 30 (1.18") |
| C6-040-PP | 40 | | | 71 (2.80") | 52 (2.05") | 58 (2.28") | 1,4 (.05") | 30 (1.18") |
| C6-042.4-PP | 42,4 | | 1.1/4" | 71 (2.80") | 52 (2.05") | 58 (2.28") | 1,4 (.05") | 30 (1.18") |
| C6-045-PP | 45 | | | 71 (2.80") | 52 (2.05") | 58 (2.28") | 1,4 (.05") | 30 (1.18") |
| C7-044.5-PP | 44,5 | 1.3/4" | | 86 (3.39") | 66 (2.60") | 66 (2.60") | 1,4 (.05") | 30 (1.18") |
| C7-045-PP | 45 | | | 86 (3.39") | 66 (2.60") | 66 (2.60") | 1,4 (.05") | 30 (1.18") |
| C7-048.3-PP | 48,3 | | 1.1/2" | 86 (3.39") | 66 (2.60") | 66 (2.60") | 1,4 (.05") | 30 (1.18") |
| C7-050-PP | 50 | | | 86 (3.39") | 66 (2.60") | 66 (2.60") | 1,4 (.05") | 30 (1.18") |
| C7-050.8-PP | 50,8 | 2" | | 86 (3.39") | 66 (2.60") | 66 (2.60") | 1,4 (.05") | 30 (1.18") |
| C7-053-PP | 53 | | | 86 (3.39") | 66 (2.60") | 66 (2.60") | 1,4 (.05") | 30 (1.18") |
| C7-054-PP | 54 | | 1.3/4" | 86 (3.39") | 66 (2.60") | 66 (2.60") | 1,4 (.05") | 30 (1.18") |
| C8-057.2-PP | 57,2 | 2.1/4" | | 121 (4.76") | 94 (3.70") | 93 (3.66") | 2 (.08") | 30 (1.18") |
| C8-060.3-PP | 60,3 | | 2" | 121 (4.76") | 94 (3.70") | 93 (3.66") | 2 (.08") | 30 (1.18") |
| C8-063.5-PP | 63,5 | 2.1/2" | | 121 (4.76") | 94 (3.70") | 93 (3.66") | 2 (.08") | 30 (1.18") |
| C8-066-PP | 66 | | | 121 (4.76") | 94 (3.70") | 93 (3.66") | 2 (.08") | 30 (1.18") |
| C8-070-PP | 70 | 2.3/4" | | 121 (4.76") | 94 (3.70") | 93 (3.66") | 2 (.08") | 30 (1.18") |
| C8-073-PP | 73 | | | 121 (4.76") | 94 (3.70") | 93 (3.66") | 2 (.08") | 30 (1.18") |
| C8-076.1-PP | 76,1 | 3" | 2.1/2" | 121 (4.76") | 94 (3.70") | 93 (3.66") | 2 (.08") | 30 (1.18") |
| C9-083.5-PP | 83,5 | | | 147 (5.79") | 120 (4.72") | 118 (4.65") | 3 (.1") | 30 (1.18") |
| C9-088.9-PP | 88,9 | 3.1/2" | 3" | 147 (5.79") | 120 (4.72") | 118 (4.65") | 3 (.1") | 30 (1.18") |
| C9-102-PP | 102 | 4" | 3.1/2" | 147 (5.79") | 120 (4.72") | 118 (4.65") | 3 (.1") | 30 (1.18") |

Pipe Clamps Standard Series DIN 3015-1

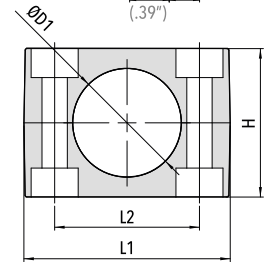
C L Clamp Body



C1L



C2L-C9L



Collare con superficie interna liscia senza tiraggio

Coppia di semicollari

Adatto per il fissaggio di tubi flessibili o cavi

Clamp smooth inside surface without tension clearance

Two clamp halves

Suitable for the installation of hoses or cables

Abrazadera con superficie interna lisa sin dibujo

Parejas de medias abrazaderas

Adecuado para la fijación de mangueras o cables

| Code | Outside diameter ØD1 | | Nominal bore pipe (in) | L1 (mm/in) | L2 (mm/in) | H (mm/in) | Width (mm/in) |
|--------------|----------------------|-------|---------------------------|---------------|---------------|---------------|------------------|
| | (mm) | (in) | | | | | |
| C1L-006-PP | 6 | | | 28 (1.10") | 9,5 (.37") | 26 (1.02") | 30 (1.18") |
| C1L-006.4-PP | 6,4 | 1/4" | | 28 (1.10") | 9,5 (.37") | 26 (1.02") | 30 (1.18") |
| C1L-008-PP | 8 | 5/16" | | 28 (1.10") | 9,5 (.37") | 26 (1.02") | 30 (1.18") |
| C1L-009.5-PP | 9,5 | 3/8" | | 28 (1.10") | 9,5 (.37") | 26 (1.02") | 30 (1.18") |
| C1L-010-PP | 10 | | 1/8" | 28 (1.10") | 9,5 (.37") | 26 (1.02") | 30 (1.18") |
| C1L-012-PP | 12 | | | 28 (1.10") | 9,5 (.37") | 26 (1.02") | 30 (1.18") |
| C1L-012.7-PP | 12,7 | 1/2" | | 28 (1.10") | 9,5 (.37") | 26 (1.02") | 30 (1.18") |
| C2L-006-PP | 6 | | | 37 (1.46") | 20 (.79") | 26 (1.02") | 30 (1.18") |
| C2L-006.4-PP | 6,4 | 1/4" | | 37 (1.46") | 20 (.79") | 26 (1.02") | 30 (1.18") |
| C2L-008-PP | 8 | 5/16" | | 37 (1.46") | 20 (.79") | 26 (1.02") | 30 (1.18") |
| C2L-009.5-PP | 9,5 | 3/8" | | 37 (1.46") | 20 (.79") | 26 (1.02") | 30 (1.18") |
| C2L-010-PP | 10 | | 1/8" | 37 (1.46") | 20 (.79") | 26 (1.02") | 30 (1.18") |
| C2L-012-PP | 12 | | | 37 (1.46") | 20 (.79") | 26 (1.02") | 30 (1.18") |
| C2L-012.7-PP | 12,7 | 1/2" | | 37 (1.46") | 20 (.79") | 26 (1.02") | 30 (1.18") |
| C3L-012.7-PP | 12,7 | 1/2" | | 42 (1.65") | 26 (1.02") | 32 (1.26") | 30 (1.18") |
| C3L-013.5-PP | 13,5 | | 1/4" | 42 (1.65") | 26 (1.02") | 32 (1.26") | 30 (1.18") |
| C3L-014-PP | 14 | | | 42 (1.65") | 26 (1.02") | 32 (1.26") | 30 (1.18") |
| C3L-015-PP | 15 | | | 42 (1.65") | 26 (1.02") | 32 (1.26") | 30 (1.18") |
| C3L-016-PP | 16 | 5/8" | | 42 (1.65") | 26 (1.02") | 32 (1.26") | 30 (1.18") |
| C3L-017.2-PP | 17,2 | | 3/8" | 42 (1.65") | 26 (1.02") | 32 (1.26") | 30 (1.18") |
| C3L-018-PP | 18 | | | 42 (1.65") | 26 (1.02") | 32 (1.26") | 30 (1.18") |
| C4L-019-PP | 19 | 3/4" | | 50 (1.97") | 33 (1.30") | 35 (1.38") | 30 (1.18") |
| C4L-020-PP | 20 | | | 50 (1.97") | 33 (1.30") | 35 (1.38") | 30 (1.18") |
| C4L-021.3-PP | 21,3 | | 1/2" | 50 (1.97") | 33 (1.30") | 35 (1.38") | 30 (1.18") |

Pipe Clamps Standard Series DIN 3015-1

| Code | Outside diameter ØD1 | | Nominal bore pipe (in) | L1 (mm/in) | L2 (mm/in) | H (mm/in) | Width (mm/in) |
|--------------|----------------------|--------|---------------------------|----------------|----------------|-----------------|------------------|
| | (mm) | (in) | | | | | |
| C4L-022-PP | 22 | 7/8" | | 50 (1.97") | 33 (1.30") | 35 (1.38") | 30 (1.18") |
| C4L-023-PP | 23 | | | 50 (1.97") | 33 (1.30") | 35 (1.38") | 30 (1.18") |
| C4L-025-PP | 25 | | | 50 (1.97") | 33 (1.30") | 35 (1.38") | 30 (1.18") |
| C4L-025.4-PP | 25,4 | 1" | | 50 (1.97") | 33 (1.30") | 35 (1.38") | 30 (1.18") |
| C5L-026.9-PP | 26,9 | | 3/4" | 57 (2.24") | 40 (1.57") | 41 (1.6") | 30 (1.18") |
| C5L-028-PP | 28 | | | 57 (2.24") | 40 (1.57") | 41 (1.6") | 30 (1.18") |
| C5L-029-PP | 29 | | | 57 (2.24") | 40 (1.57") | 41 (1.6") | 30 (1.18") |
| C5L-030-PP | 30 | | | 57 (2.24") | 40 (1.57") | 41 (1.6") | 30 (1.18") |
| C5L-032-PP | 32 | 1.1/4" | | 57 (2.24") | 40 (1.57") | 41 (1.6") | 30 (1.18") |
| C6L-032-PP | 32 | 1.1/4" | | 71 (2.80") | 52 (2.05") | 56,5 (2.22") | 30 (1.18") |
| C6L-033.7-PP | 33,7 | | 1" | 71 (2.80") | 52 (2.05") | 56,5 (2.22") | 30 (1.18") |
| C6L-035-PP | 35 | | | 71 (2.80") | 52 (2.05") | 56,5 (2.22") | 30 (1.18") |
| C6L-038-PP | 38 | 1.1/2" | | 71 (2.80") | 52 (2.05") | 56,5 (2.22") | 30 (1.18") |
| C6L-040-PP | 40 | | | 71 (2.80") | 52 (2.05") | 56,5 (2.22") | 30 (1.18") |
| C6L-042.4-PP | 42,4 | | 1.1/4" | 71 (2.80") | 52 (2.05") | 56,5 (2.22") | 30 (1.18") |
| C6L-045-PP | 45 | | | 71 (2.80") | 52 (2.05") | 56,5 (2.22") | 30 (1.18") |
| C7L-044.5-PP | 44,5 | 1.3/4" | | 86 (3.39") | 66 (2.60") | 64,5 (2.54") | 30 (1.18") |
| C7L-045-PP | 45 | | | 86 (3.39") | 66 (2.60") | 64,5 (2.54") | 30 (1.18") |
| C7L-048.3-PP | 48,3 | | 1.1/2" | 86 (3.39") | 66 (2.60") | 64,5 (2.54") | 30 (1.18") |
| C7L-050-PP | 50 | | | 86 (3.39") | 66 (2.60") | 64,5 (2.54") | 30 (1.18") |
| C7L-050.8-PP | 50,8 | 2" | | 86 (3.39") | 66 (2.60") | 64,5 (2.54") | 30 (1.18") |
| C7L-053-PP | 53 | | | 86 (3.39") | 66 (2.60") | 64,5 (2.54") | 30 (1.18") |
| C7L-054-PP | 54 | | 1.3/4" | 86 (3.39") | 66 (2.60") | 64,5 (2.54") | 30 (1.18") |
| C8L-057.2-PP | 57,2 | 2.1/4" | | 121 (4.76") | 94 (3.70") | 91 (3.58") | 30 (1.18") |
| C8L-060.3-PP | 60,3 | | 2" | 121 (4.76") | 94 (3.70") | 91 (3.58") | 30 (1.18") |
| C8L-063.5-PP | 63,5 | 2.1/2" | | 121 (4.76") | 94 (3.70") | 91 (3.58") | 30 (1.18") |
| C8L-066-PP | 66 | | | 121 (4.76") | 94 (3.70") | 91 (3.58") | 30 (1.18") |
| C8L-070-PP | 70 | 2.3/4" | | 121 (4.76") | 94 (3.70") | 91 (3.58") | 30 (1.18") |
| C8L-073-PP | 73 | | | 121 (4.76") | 94 (3.70") | 91 (3.58") | 30 (1.18") |
| C8L-076.1-PP | 76,1 | 3" | 2.1/2" | 121 (4.76") | 94 (3.70") | 91 (3.58") | 30 (1.18") |
| C9L-083.5-PP | 83,5 | | | 147 (5.79") | 120 (4.72") | 115 (4.53") | 30 (1.18") |
| C9L-088.9-PP | 88,9 | 3.1/2" | 3" | 147 (5.79") | 120 (4.72") | 115 (4.53") | 30 (1.18") |
| C9L-102-PP | 102 | 4" | 3.1/2" | 147 (5.79") | 120 (4.72") | 118 (4.65") | 30 (1.18") |

Pipe Clamps Standard Series DIN 3015-1

CB Clamp Body

Con bussola in gomma

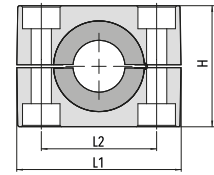
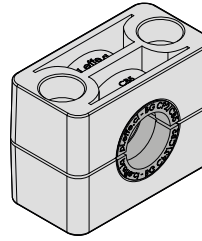
Coppia di semicollari

With rubber bushing

Two clamp halves

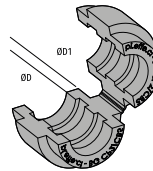
Con casquillo de goma

Parejas de medias abrazaderas



| Code | L1 (mm/in) | L2 (mm/in) | H (mm/in) | Width (mm/in) |
|--------|---------------|---------------|---------------|------------------|
| CB5-PP | 57 (2.24") | 40 (1.57") | 42 (1.65") | 30 (1.18") |
| CB7-PP | 86 (3.39") | 66 (2.60") | 66 (2.60") | 30 (1.18") |

BG Rubber bushing



| Code | Outside diameter ØD1 | | Nominal bore pipe (in) | ØD1 (mm/in) | Width (mm/in) |
|------------------|----------------------|--------|---------------------------|----------------|------------------|
| | (mm) | (in) | | | |
| BG-06-CB5/CP2B | 6 | | | 25 (.98") | 30 (1.18") |
| BG-08-CB5/CP2B | 8 | 5/16" | | 25 (.98") | 30 (1.18") |
| BG-10-CB5/CP2B | 10 | | 1/8" | 25 (.98") | 30 (1.18") |
| BG-12-CB5/CP2B | 12 | | | 25 (.98") | 30 (1.18") |
| BG-12.7-CB5/CP2B | 12,7 | 1/2" | | 25 (.98") | 30 (1.18") |
| BG-14-CB5/CP2B | 14 | | | 25 (.98") | 30 (1.18") |
| BG-15-CB5/CP2B | 15 | | | 25 (.98") | 30 (1.18") |
| BG-16-CB5/CP2B | 16 | 5/8" | | 25 (.98") | 30 (1.18") |
| BG-17.2-CB5/CP2B | 17,2 | | 3/8" | 25 (.98") | 30 (1.18") |
| BG-18-CB5/CP2B | 18 | | | 25 (.98") | 30 (1.18") |
| BG-19-CB5/CP2B | 19 | 3/4" | | 25 (.98") | 30 (1.18") |
| BG-20-CB7/CP3B | 20 | | | 38 (1.50") | 30 (1.18") |
| BG-21.3-CB7/CP3B | 21,3 | | 1/2" | 38 (1.50") | 30 (1.18") |
| BG-22-CB7/CP3B | 22 | 7/8" | | 38 (1.50") | 30 (1.18") |
| BG-25-CB7/CP3B | 25 | | | 38 (1.50") | 30 (1.18") |
| BG-26.9-CB7/CP3B | 26,9 | | 3/4" | 38 (1.50") | 30 (1.18") |
| BG-28-CB7/CP3B | 28 | | | 38 (1.50") | 30 (1.18") |
| BG-30-CB7/CP3B | 30 | | | 38 (1.50") | 30 (1.18") |
| BG-32-CB7/CP3B | 32 | 1.1/4" | | 38 (1.50") | 30 (1.18") |

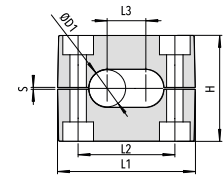
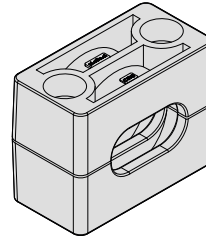
Pipe Clamps Standard Series DIN 3015-1

C TG Clamp Body

Per tubi gemellari
Coppia di semicollari

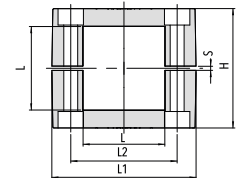
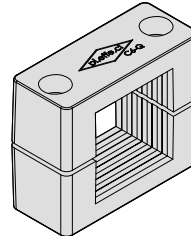
For twin pipes
Two clamp halves

Para tubos gemelos
Parejas de medias abrazaderas



| Code | Outside diameter ØD1 | | L1 (mm/in) | L2 (mm/in) | L3 (mm/in) | H (mm/in) | S (mm/in) | Width (mm/in) |
|-------------|----------------------|-----------|---------------|---------------|---------------|---------------|---------------|------------------|
| | (mm) | (in) | | | | | | |
| C4TG-010-PP | 10-10 | .39"-.39" | 50 (1.97") | 33 (1.30") | 10 (.40") | 36 (1.42") | 0,8 (.03") | 30 (1.18") |
| C4TG-012-PP | 12-12 | .47"-.47" | 50 (1.97") | 33 (1.30") | 12 (.47") | 36 (1.42") | 0,8 (.03") | 30 (1.18") |
| C5TG-014-PP | 14-14 | .55"-.55" | 57 (2.24") | 40 (1.57") | 14 (.55") | 42 (1.65") | 1 (.04") | 30 (1.18") |
| C5TG-016-PP | 16-16 | .63"-.63" | 57 (2.24") | 40 (1.57") | 16 (.63") | 42 (1.65") | 1 (.04") | 30 (1.18") |
| C6TG-020-PP | 20-20 | .79"-.79" | 71 (2.80") | 52 (2.05") | 20 (.79") | 58 (2.28") | 1,4 (.05") | 30 (1.18") |

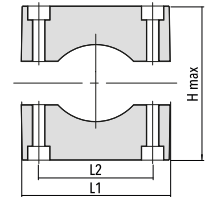
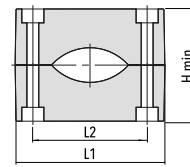
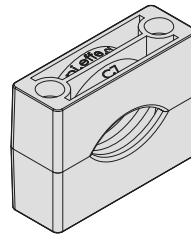
C6 Q Proximity switches rectangular type



| Code | L x L (mm/in) | L1 (mm/in) | L2 (mm/in) | H (mm/in) | S (mm/in) | Width (mm/in) |
|--------------|----------------------------|---------------|---------------|---------------|---------------|------------------|
| | | | | | | |
| C6Q40-036-PP | 40 x 36 (1.57" x 1.42") | 71 (2.8") | 52 (2.05") | 58 (2.28") | 1,4 (.05") | 30 (1.18") |

Pipe Clamps Standard Series DIN 3015-1

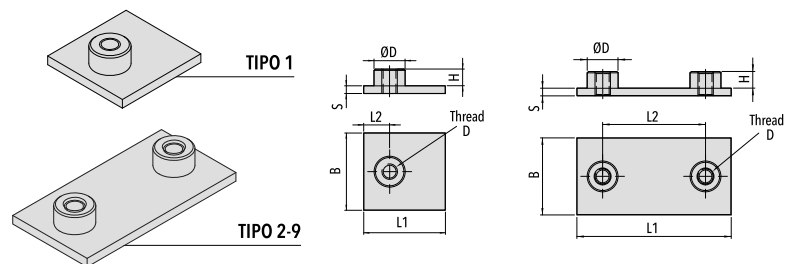
C7 C Clamp Body



Clamps with oval hole for fixing electric cables
Two clamp halves

| Code | Outside diameter ØD (mm/in) | L1 (mm/in) | L2 (mm/in) | H min (mm/in) | H max (mm/in) | Width (mm/in) |
|----------------|--------------------------------|---------------|---------------|------------------|------------------|------------------|
| C7C-020/050-PP | 20 - 50 (.79" - 1.97") | 86 (3.39") | 66 (2.60") | 64 (2.52") | 94 (3.70") | 30 (1.18") |

P Single weld plate

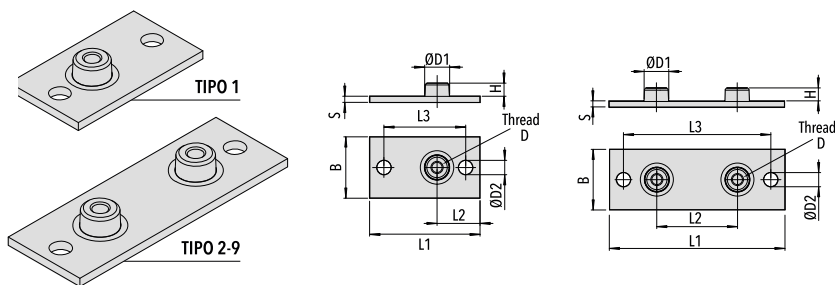


| Code | Thread D | L1 (mm/in) | L2 (mm/in) | B (mm/in) | S (mm/in) | H (mm/in) | ØD (mm/in) |
|-------|--------------------|-----------------|----------------|---------------|--------------|---------------|---------------|
| P1-M2 | M6 (1/4-20 UNC) | 31,5 (1.24") | 10 (.39") | 30 (1.18") | 3 (.12") | 6,5 (.26") | 12 (.47") |
| P2-M2 | M6 (1/4-20 UNC) | 36 (1.42") | 20 (.79") | 30 (1.18") | 3 (.12") | 6,5 (.26") | 12 (.47") |
| P3-M2 | M6 (1/4-20 UNC) | 42 (1.65") | 26 (1.02") | 30 (1.18") | 3 (.12") | 6,5 (.26") | 12 (.47") |
| P4-M2 | M6 (1/4-20 UNC) | 50 (1.97") | 33 (1.30") | 30 (1.18") | 3 (.12") | 6,5 (.26") | 12 (.47") |
| P5-M2 | M6 (1/4-20 UNC) | 60 (2.36") | 40 (1.57") | 30 (1.18") | 3 (.12") | 6,5 (.26") | 12 (.47") |
| P6-M2 | M6 (1/4-20 UNC) | 71 (2.80") | 52 (2.05") | 30 (1.18") | 3 (.12") | 6,5 (.26") | 12 (.47") |
| P7-M2 | M6 (1/4-20 UNC) | 88 (3.46") | 66 (2.60") | 30 (1.18") | 3 (.12") | 6,5 (.26") | 12 (.47") |
| P8-M2 | M6 (1/4-20 UNC) | 122 (4.80") | 94 (3.70") | 30 (1.18") | 5 (.20") | 6,5 (.26") | 12 (.47") |
| P9-M2 | M6 (1/4-20 UNC) | 148 (5.83") | 120 (4.72") | 30 (1.18") | 5 (.20") | 6,5 (.26") | 12 (.47") |

Pipe Clamps Standard Series DIN 3015-1

PL Elongated plate

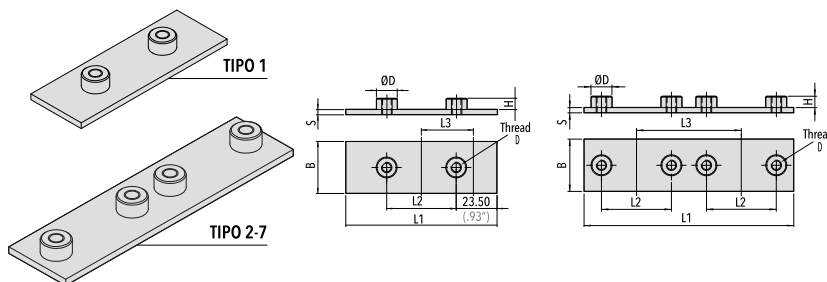
With screws



| Code | Thread D | L1 (mm/in) | L2 (mm/in) | L3 (mm/in) | B (mm/in) | S (mm/in) | H (mm/in) | ØD1 (mm/in) | ØD2 (mm/in) |
|--------|--------------------|----------------|----------------|----------------|---------------|--------------|---------------|----------------|----------------|
| PL1-M3 | M6 (1/4-20 UNC) | 58 (2.28") | 24,5 (.96") | 44 (1.73") | 30 (1.18") | 3 (.12") | 6,5 (.26") | 12 (.47") | 7 (.47") |
| PL2-M3 | M6 (1/4-20 UNC) | 64 (2.52") | 20 (.79") | 50 (1.97") | 30 (1.18") | 3 (.12") | 6,5 (.26") | 12 (.47") | 7 (.47") |
| PL3-M3 | M6 (1/4-20 UNC) | 70 (2.76") | 26 (1.02") | 56 (2.20") | 30 (1.18") | 3 (.12") | 6,5 (.26") | 12 (.47") | 7 (.47") |
| PL4-M3 | M6 (1/4-20 UNC) | 78 (3.07") | 33 (1.30") | 64 (2.52") | 30 (1.18") | 3 (.12") | 6,5 (.26") | 12 (.47") | 7 (.47") |
| PL5-M3 | M6 (1/4-20 UNC) | 87 (3.43") | 40 (1.57") | 73 (2.87") | 30 (1.18") | 3 (.12") | 6,5 (.26") | 12 (.47") | 7 (.47") |
| PL6-M3 | M6 (1/4-20 UNC) | 100 (3.94") | 52 (2.05") | 86 (3.39") | 30 (1.18") | 3 (.12") | 6,5 (.26") | 12 (.47") | 7 (.47") |
| PL7-M3 | M6 (1/4-20 UNC) | 115 (4.53") | 66 (2.60") | 100 (3.94") | 30 (1.18") | 3 (.12") | 6,5 (.26") | 12 (.47") | 7 (.47") |
| PL8-M3 | M6 (1/4-20 UNC) | 150 (5.91") | 94 (3.70") | 136 (5.35") | 30 (1.18") | 5 (.20") | 6,5 (.26") | 12 (.47") | 7 (.47") |
| PL9-M3 | M6 (1/4-20 UNC) | 178 (7.01") | 120 (4.72") | 162 (6.38") | 30 (1.18") | 5 (.20") | 6,5 (.26") | 12 (.47") | 7 (.47") |

PD Double weld plate

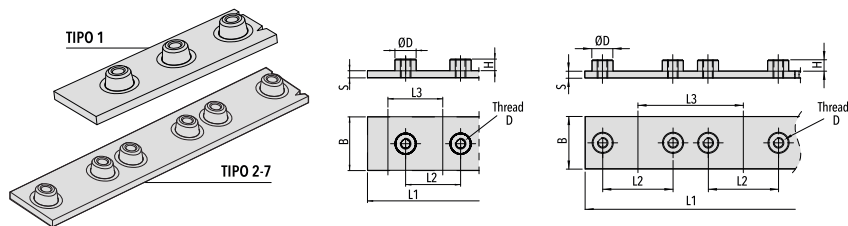
For 2 clamps



| Code | Thread D | L1 (mm/in) | L2 (mm/in) | L3 (mm/in) | B (mm/in) | S (mm/in) | H (mm/in) | ØD (mm/in) |
|--------|--------------------|----------------|---------------|---------------|---------------|--------------|---------------|---------------|
| PD1-M2 | M6 (1/4-20 UNC) | 87 (3.43") | 40 (1.57") | 40 (1.57") | 30 (1.18") | 3 (.12") | 6,5 (.26") | 12 (.47") |
| PD2-M2 | M6 (1/4-20 UNC) | 76 (3") | 20 (.79") | 38 (1.49") | 30 (1.18") | 3 (.12") | 6,5 (.26") | 12 (.47") |
| PD3-M2 | M6 (1/4-20 UNC) | 88 (3.46") | 26 (1.02") | 44 (1.73") | 30 (1.18") | 3 (.12") | 6,5 (.26") | 12 (.47") |
| PD4-M2 | M6 (1/4-20 UNC) | 102 (4.02") | 33 (1.30") | 51 (2") | 30 (1.18") | 3 (.12") | 6,5 (.26") | 12 (.47") |
| PD5-M2 | M6 (1/4-20 UNC) | 120 (4.72") | 40 (1.57") | 60 (2.36") | 30 (1.18") | 3 (.12") | 6,5 (.26") | 12 (.47") |
| PD6-M2 | M6 (1/4-20 UNC) | 150 (5.90") | 52 (2.05") | 75 (2.95") | 30 (1.18") | 3 (.12") | 6,5 (.26") | 12 (.47") |
| PD7-M2 | M6 (1/4-20 UNC) | 180 (7.08") | 66 (2.60") | 90 (3.54") | 30 (1.18") | 3 (.12") | 6,5 (.26") | 12 (.47") |

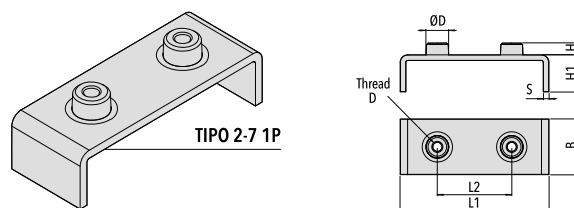
Pipe Clamps Standard Series DIN 3015-1

PM Multiple weld plate



| Code | Thread D | N. of Clamps | L1 (mm/in) | L2 (mm/in) | L3 (mm/in) | B (mm/in) | S (mm/in) | H (mm/in) | ØD (mm/in) |
|--------|--------------------|--------------|-----------------|---------------|---------------|---------------|--------------|---------------|---------------|
| PM1-M2 | M6 (1/4-20 UNC) | 10 | 310 (12.28") | 31 (1.22") | 31 (1.22") | 30 (1.18") | 4 (.16") | 6,5 (.26") | 12 (.47") |
| PM2-M2 | M6 (1/4-20 UNC) | 10 | 380 (14.96") | 20 (.79") | 38 (1.49") | 30 (1.18") | 4 (.16") | 6,5 (.26") | 12 (.47") |
| PM3-M2 | M6 (1/4-20 UNC) | 10 | 440 (17.32") | 26 (1.02") | 44 (1.73") | 30 (1.18") | 4 (.16") | 6,5 (.26") | 12 (.47") |
| PM4-M2 | M6 (1/4-20 UNC) | 10 | 520 (20.47") | 33 (1.30") | 52 (2.05") | 30 (1.18") | 4 (.16") | 6,5 (.26") | 12 (.47") |
| PM5-M2 | M6 (1/4-20 UNC) | 5 | 300 (11.81") | 40 (1.57") | 60 (2.36") | 30 (1.18") | 4 (.16") | 6,5 (.26") | 12 (.47") |
| PM6-M2 | M6 (1/4-20 UNC) | 5 | 375 (14.76") | 52 (2.05") | 75 (2.95") | 30 (1.18") | 4 (.16") | 6,5 (.26") | 12 (.47") |
| PM7-M2 | M6 (1/4-20 UNC) | 5 | 450 (17.72") | 66 (2.60") | 90 (3.54") | 30 (1.18") | 4 (.16") | 6,5 (.26") | 12 (.47") |

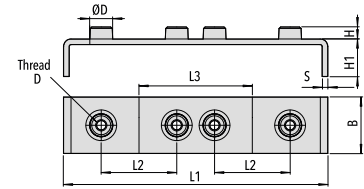
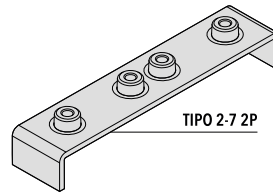
PM C 1P Single spaced plate



| Code | Thread D | L1 (mm/in) | L2 (mm/in) | H (mm/in) | H1 (mm/in) | B (mm/in) | S (mm/in) | ØD (mm/in) |
|------------|--------------------|----------------|---------------|---------------|---------------|---------------|--------------|---------------|
| PMC2-1P-M3 | M6 (1/4-20 UNC) | 60 (2.36") | 20 (.26") | 6,5 (.26") | 20 (.79") | 30 (1.18") | 3 (.12") | 12 (.47") |
| PMC3-1P-M3 | M6 (1/4-20 UNC) | 66 (2.60") | 26 (1.02") | 6,5 (.26") | 20 (.79") | 30 (1.18") | 3 (.12") | 12 (.47") |
| PMC4-1P-M3 | M6 (1/4-20 UNC) | 73 (2.87") | 33 (1.30") | 6,5 (.26") | 20 (.79") | 30 (1.18") | 3 (.12") | 12 (.47") |
| PMC5-1P-M3 | M6 (1/4-20 UNC) | 80 (3.15") | 40 (1.57") | 6,5 (.26") | 20 (.79") | 30 (1.18") | 3 (.12") | 12 (.47") |
| PMC6-1P-M3 | M6 (1/4-20 UNC) | 92 (3.62") | 52 (2.05") | 6,5 (.26") | 20 (.79") | 30 (1.18") | 3 (.12") | 12 (.47") |
| PMC7-1P-M3 | M6 (1/4-20 UNC) | 100 (3.94") | 66 (2.60") | 6,5 (.26") | 20 (.79") | 30 (1.18") | 3 (.12") | 12 (.47") |

Pipe Clamps Standard Series DIN 3015-1

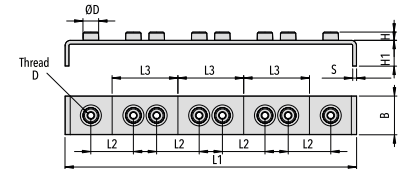
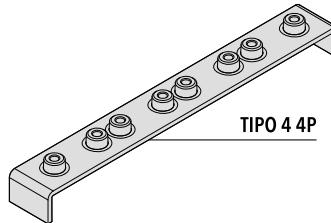
PM 2P Multiple spaced plate



For 2 clamps

| Code | Thread D | L1 (mm/in) | L2 (mm/in) | L3 (mm/in) | H (mm/in) | H1 (mm/in) | B (mm/in) | S (mm/in) | ØD (mm/in) |
|------------|--------------------|----------------|---------------|---------------|---------------|---------------|---------------|--------------|---------------|
| PMC2-2P-M3 | M6 (1/4-20 UNC) | 98 (3.86") | 20 (.26") | 38 (1.50") | 6,5 (.26") | 20 (.79") | 30 (1.18") | 3 (.12") | 12 (.47") |
| PMC3-2P-M3 | M6 (1/4-20 UNC) | 110 (4.33") | 26 (1.02") | 44 (1.73") | 6,5 (.26") | 20 (.79") | 30 (1.18") | 3 (.12") | 12 (.47") |
| PMC4-2P-M3 | M6 (1/4-20 UNC) | 124 (4.88") | 33 (1.30") | 51 (2") | 6,5 (.26") | 20 (.79") | 30 (1.18") | 3 (.12") | 12 (.47") |
| PMC5-2P-M3 | M6 (1/4-20 UNC) | 140 (5.51") | 40 (1.57") | 60 (2.36") | 6,5 (.26") | 20 (.79") | 30 (1.18") | 3 (.12") | 12 (.47") |
| PMC6-2P-M3 | M6 (1/4-20 UNC) | 166 (6.53") | 52 (2.05") | 75 (2.95") | 6,5 (.26") | 20 (.79") | 30 (1.18") | 3 (.12") | 12 (.47") |
| PMC7-2P-M3 | M6 (1/4-20 UNC) | 195 (7.68") | 66 (2.60") | 90 (3.54") | 6,5 (.26") | 20 (.79") | 30 (1.18") | 3 (.12") | 12 (.47") |

PM C 4P Multiple spaced plate

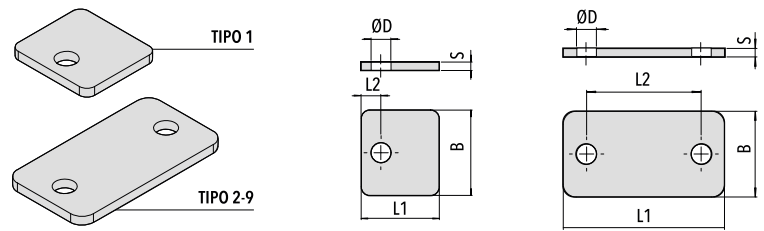


For 4 clamps

| Code | Thread D | L1 (mm/in) | L2 (mm/in) | L3 (mm/in) | H (mm/in) | H1 (mm/in) | B (mm/in) | S (mm/in) | ØD (mm/in) |
|------------|--------------------|---------------|---------------|---------------|---------------|---------------|---------------|--------------|---------------|
| PMC4-4P-M3 | M6 (1/4-20 UNC) | 98 (3.86") | 20 (.26") | 38 (1.50") | 6,5 (.26") | 20 (.79") | 30 (1.18") | 3 (.12") | 12 (.47") |

Pipe Clamps Standard Series DIN 3015-1

PS Upper plate

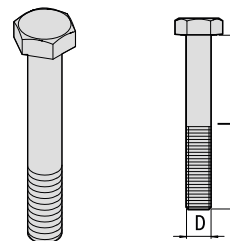


| Code | L1 (mm/in) | L2 (mm/in) | B (mm/in) | S (mm/in) | ØD (mm/in) |
|--------|-----------------|----------------|---------------|--------------|---------------|
| PS1-M3 | 27,5 (1.08") | 9 (.35") | 30 (1.18") | 3 (.12") | 7 (.28") |
| PS2-M3 | 34,5 (1.36") | 20 (.79") | 30 (1.18") | 3 (.12") | 7 (.28") |
| PS3-M3 | 40,5 (1.59") | 26 (1.02") | 30 (1.18") | 3 (.12") | 7 (.28") |
| PS4-M3 | 48 (1.89") | 33 (1.30") | 30 (1.18") | 3 (.12") | 7 (.28") |
| PS5-M3 | 56,5 (2.22") | 40 (1.57") | 30 (1.18") | 3 (.12") | 7 (.28") |
| PS6-M3 | 69,5 (2.74") | 52 (2.05") | 30 (1.18") | 3 (.12") | 7 (.28") |
| PS7-M3 | 85,5 (3.36") | 66 (2.60") | 30 (1.18") | 3 (.12") | 7 (.28") |
| PS8-M3 | 118 (4.65") | 94 (3.70") | 30 (1.18") | 5 (.20") | 7 (.28") |
| PS9-M3 | 144 (5.67") | 120 (4.72") | 30 (1.18") | 5 (.20") | 7 (.28") |

TE Hexagon head bolt

ISO 4014/4017

To be used with upper plate PS



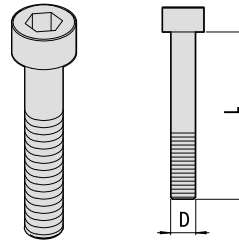
| Code | Clamp reference | Thread D x L |
|--------------|-----------------------|-------------------------------|
| TE-M6X30-M3 | C1 - C1L C2 - C2L | M6x30 (1/4-20 UNCx1.1/4") |
| TE-M6X35-M3 | C3 - C3L | M6x35 (1/4-20 UNCx1.3/8") |
| TE-M6X40-M3 | C4 - C4L - C4TG | M6x40 (1/4-20 UNCx1.1/2") |
| TE-M6X45-M3 | C5 - C5L - CB5 - C5TG | M6x45 (1/4-20 UNCx1.7/8") |
| TE-M6X60-M3 | C6 - C6L - C6TG - C6Q | M6x60 (1/4-20 UNCx2.3/8") |
| TE-M6X70-M3 | C7 - C7L - CB7 - C7C | M6x70 (1/4-20 UNCx2.3/4") |
| TE-M6X100-M3 | C8 - C8L | M6x100 (1/4-20 UNCx4") |
| TE-M6X125-M3 | C9 - C9L | M6x125 (1/4-20 UNCx4.7/8") |

Pipe Clamps Standard Series DIN 3015-1

TCEI Socket capscrew

ISO 4762

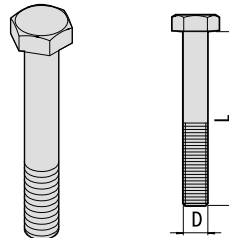
With inner hexagon socket



| Code | Clamp reference | Thread D x L |
|----------------|-----------------------|-------------------------------|
| TCEI-M6X20-M3 | C1 - C1L C2 - C2L | M6x20 (1/4-20 UNCx1.1/4") |
| TCEI-M6X25-M3 | C3 - C3L | M6x25 (1/4-20 UNCx1") |
| TCEI-M6X30-M3 | C4 - C4L - C4TG | M6x30 (1/4-20 UNCx1.1/8") |
| TCEI-M6X35-M3 | C5 - C5L - C5 - C5TG | M6x35 (1/4-20 UNCx1.3/8") |
| TCEI-M6X50-M3 | C6 - C6L - C6TG - C6Q | M6x50 (1/4-20 UNCx2") |
| TCEI-M6X60-M3 | C7 - C7L - C7 - C7C | M6x60 (1/4-20 UNCx2.1/2") |
| TCEI-M6X90-M3 | C8 - C8L | M6x90 (1/4-20 UNCx3.3/8") |
| TCEI-M6X110-M3 | C9 - C9L | M6x110 (1/4-20 UNCx4.3/8") |

TEB Hexagon head bolt

To be used with bushing B

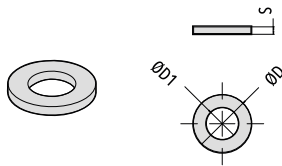


| Code | Clamp reference | Thread D x L |
|-------------|-----------------------|------------------------------|
| TE-M6X27-M3 | C1 - C1L C2 - C2L | M6x27 (1/4-20 UNCx1.1/8") |
| TE-M6X32-M3 | C3 - C3L | M6x32 (1/4-20 UNCx1.3/8") |
| TE-M6X35-M3 | C4 - C4L - C4TG | M6x35 (1/4-20 UNCx1.3/8") |
| TE-M6X42-M3 | C5 - C5L - C5 - C5TG | M6x42 (1/4-20 UNCx1.5/8") |
| TE-M6X57-M3 | C6 - C6L - C6TG - C6Q | M6x57 (1/4-20 UNCx2.3/8") |
| TE-M6X65-M3 | C7 - C7L - C7 - C7C | M6x65 (1/4-20 UNCx2.3/4") |

Pipe Clamps Standard Series DIN 3015-1

RP Flat washer

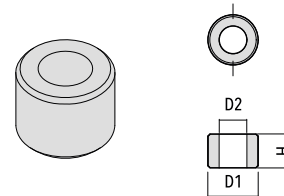
To be used with screw TCEI / VA



| Code | ØD (mm/in) | ØD1 (mm/in) | S (mm/in) |
|-------|----------------|----------------|---------------|
| RP-M3 | 11,5 (.45") | 6,3 (.25") | 0,8 (.03") |

B Bushing

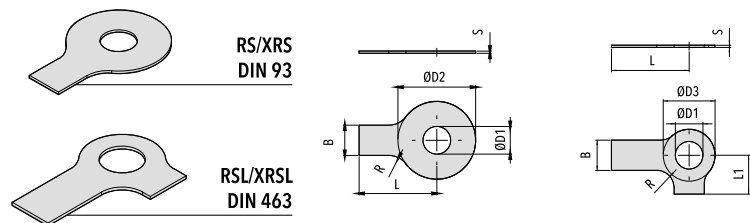
To be used with hexagon head bolt TEB
(no upper plate)



| Code | D1 (mm/in) | D2 (mm/in) | H (mm/in) |
|--------|----------------|---------------|--------------|
| BLA-M3 | 11,5 (.45") | 6,5 (.26") | 8 (.31") |

RS / RSL Safety washer

To be used with hexagon head bolt TE / TEB

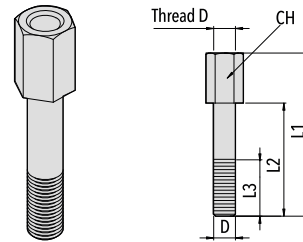


| Code | ØD1 (mm/in) | B (mm/in) | ØD2 (mm/in) | ØD3 (mm/in) | L (mm/in) | L1 (mm/in) | R (mm/in) | S (mm/in) |
|--------|----------------|--------------|----------------|----------------|--------------|---------------|--------------|--------------|
| RS-M3 | 6,4 | 7 | 19 | 12 | 18 | 9 | 4 | 0,5 |
| RSL-M3 | (.25") | (.28") | (.75") | (.47") | (.71") | (.35") | (.16") | (.02") |

Pipe Clamps Standard Series DIN 3015-1

VA High Hexagon head bolt

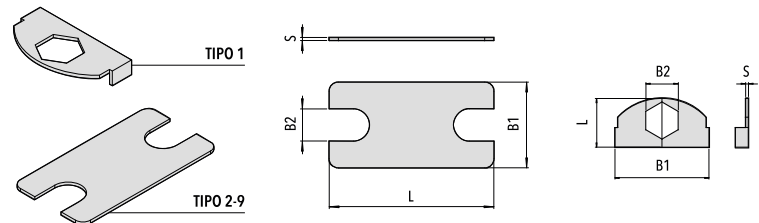
For stacked clamps



| Code | Thread D | L1 (mm/in) | L2 (mm/in) | L3 (mm/in) | CH (mm/in) |
|------------|--------------------|----------------|----------------|---------------|---------------|
| VA1/VA2-M3 | M6 (1/4-20 UNC) | 34 (1.34") | 20 (.79") | 14 (.55") | 11 (.43") |
| VA3-M3 | M6 (1/4-20 UNC) | 39 (1.53") | 25 (.98") | 14 (.55") | 11 (.43") |
| VA4-M3 | M6 (1/4-20 UNC) | 43 (1.70") | 29 (1.14") | 14 (.55") | 11 (.43") |
| VA5-M3 | M6 (1/4-20 UNC) | 49 (1.93") | 35 (1.38") | 14 (.55") | 11 (.43") |
| VA6-M3 | M6 (1/4-20 UNC) | 64 (2.52") | 50 (1.97") | 14 (.55") | 11 (.43") |
| VA7-M3 | M6 (1/4-20 UNC) | 73 (2.87") | 59 (2.32") | 14 (.55") | 11 (.43") |
| VA8-M3 | M6 (1/4-20 UNC) | 99 (3.90") | 85 (3.35") | 14 (.55") | 11 (.43") |
| VA9-M3 | M6 (1/4-20 UNC) | 124 (4.88") | 110 (4.33") | 14 (.55") | 11 (.43") |

PB Locking plate

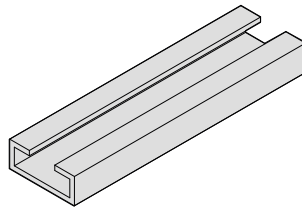
For stacked clamps



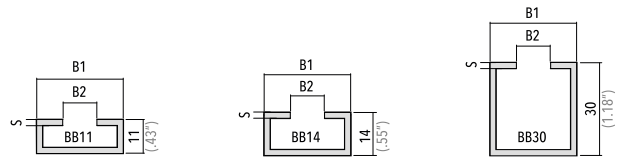
| Code | L (mm/in) | B1 (mm/in) | B2 (mm/in) | S (mm/in) |
|--------|-----------------|---------------|----------------|--------------|
| PB1-M3 | 17 (.67") | 32 (1.26") | 11,2 (.44") | 1 (.04") |
| PB2-M3 | 33 (1.30") | 28 (1.10") | 11,2 (.44") | 1 (.04") |
| PB3-M3 | 39 (1.54") | 28 (1.10") | 11,2 (.44") | 1 (.04") |
| PB4-M3 | 47 (.67") | 28 (1.10") | 11,2 (.44") | 1 (.04") |
| PB5-M3 | 54 (2.12") | 28 (1.10") | 11,2 (.44") | 1 (.04") |
| PB6-M3 | 66 (2.60") | 28 (1.10") | 11,2 (.44") | 1 (.04") |
| PB7-M3 | 80,3 (3.16") | 28 (1.10") | 11,2 (.44") | 1 (.04") |
| PB8-M3 | 117 (4.61") | 28 (1.10") | 11,2 (.44") | 1 (.04") |
| PB9-M3 | 143 (5.63") | 28 (1.10") | 11,2 (.44") | 1 (.04") |

Pipe Clamps Standard Series DIN 3015-1

BB Mounting rail

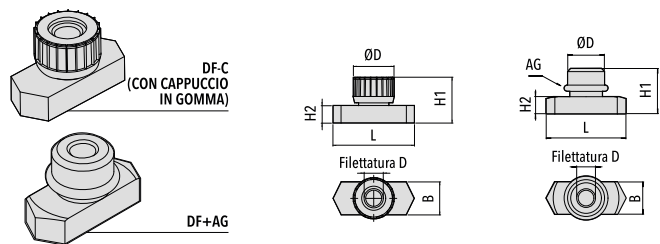


Available heights 11 / 14 / 30mm
Available length 2mt



| Code | B1 (mm/in) | B2 (mm/in) | S (mm/in) |
|-----------------|---------------|---------------|--------------|
| BB-28X11-2MT-M3 | 28 (1.10") | 11 (.43") | 2 (.08") |
| BB-28X14-2MT-M3 | 28 (1.10") | 11 (.43") | 2 (.08") |
| BB-28X30-2MT-M3 | 28 (1.10") | 11 (.43") | 2 (.08") |

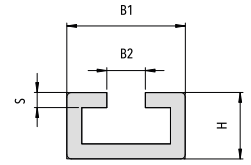
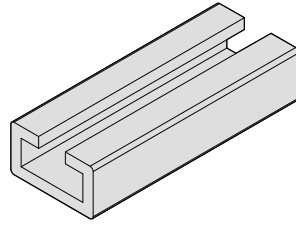
DF+AG / DF-C Rail nut with rubber ring



| Code | Thread D | L (mm/in) | B (mm/in) | H1 (mm/in) | H2 (mm/in) | ØD (mm/in) | AG (mm/in) |
|-----------|--------------------|--------------|----------------|----------------|---------------|----------------|-----------------------|
| DFM06-M3 | M6 (1/4-20 UNC) | 25,5 (1") | 10,4 (.41") | 14,5 (.57") | 5,5 (.22") | 11,8 (.46") | 10x2,2 (.39"x.08") |
| DFM06C-M3 | M6 (1/4-20 UNC) | 25,5 (1") | 10,4 (.41") | 14,5 (.57") | 5,5 (.22") | 11,8 (.46") | 10x2,2 (.39"x.08") |

Pipe Clamps Standard Series DIN 3015-1

BB Heavy rail

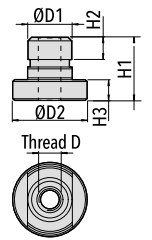
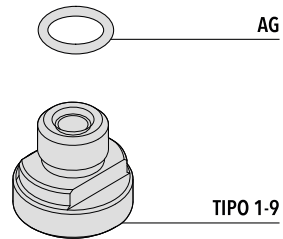


Available length 1mt / 2mt

| Code | B1 (mm/in) | B2 (mm/in) | H (mm/in) | S (mm/in) |
|-----------------|---------------|---------------|--------------|--------------|
| BB-40X22-1MT-M3 | 40 (1.57") | 13 (.51") | 22 (.86") | 5 (.19") |
| BB-40X22-2MT-M3 | 40 (1.57") | 13 (.51") | 22 (.86") | 5 (.19") |

DF PS+AG Rail nut with rubber ring

For heavy rail

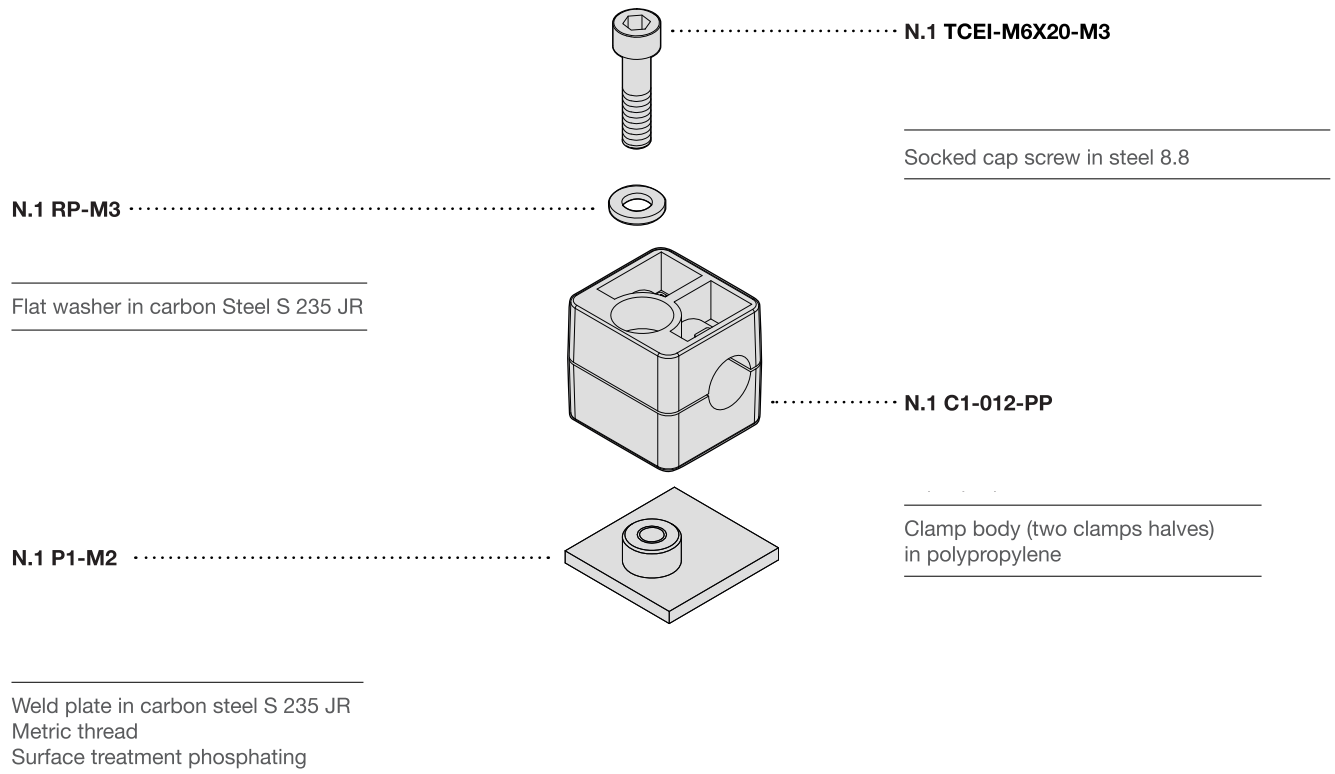


| Code | ØD1 (mm/in) | ØD2 (mm/in) | H1 (mm/in) | H2 (mm/in) | H3 (mm/in) | Thread D | AG (mm/in) |
|-----------|----------------|----------------|---------------|---------------|---------------|--------------------|-----------------------|
| DFPM06-M3 | 11,8 (.46") | 20 (.79") | 17 (.67") | 6 (.24") | 5,6 (.22") | M6 (1/4-20 UNC) | 10x2,2 (.39"x.08") |

Pipe Clamps Standard Series DIN 3015-1

Mounting example 1

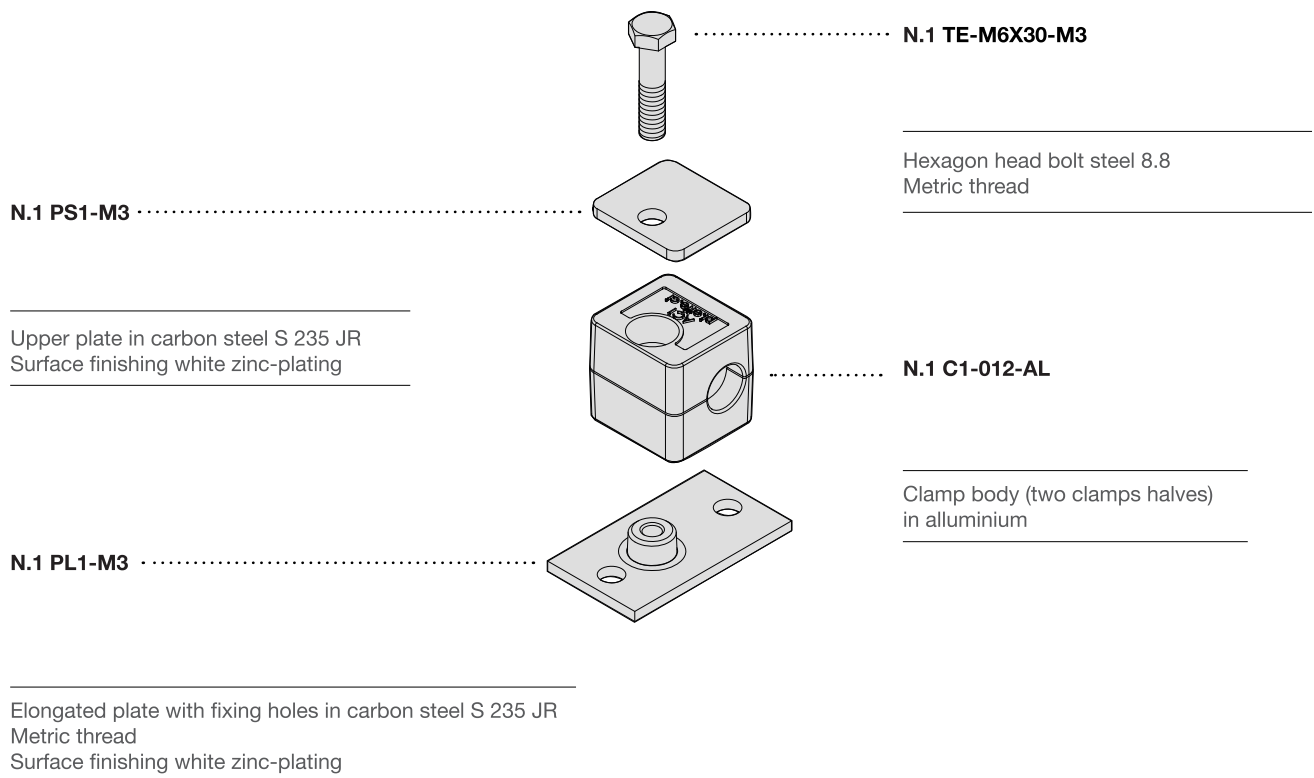
Complete C1 polypropylene clamp for pipe with outside diameter 12mm with single weld plate and flat washer.



Pipe Clamps Standard Series DIN 3015-1

Mounting example 2

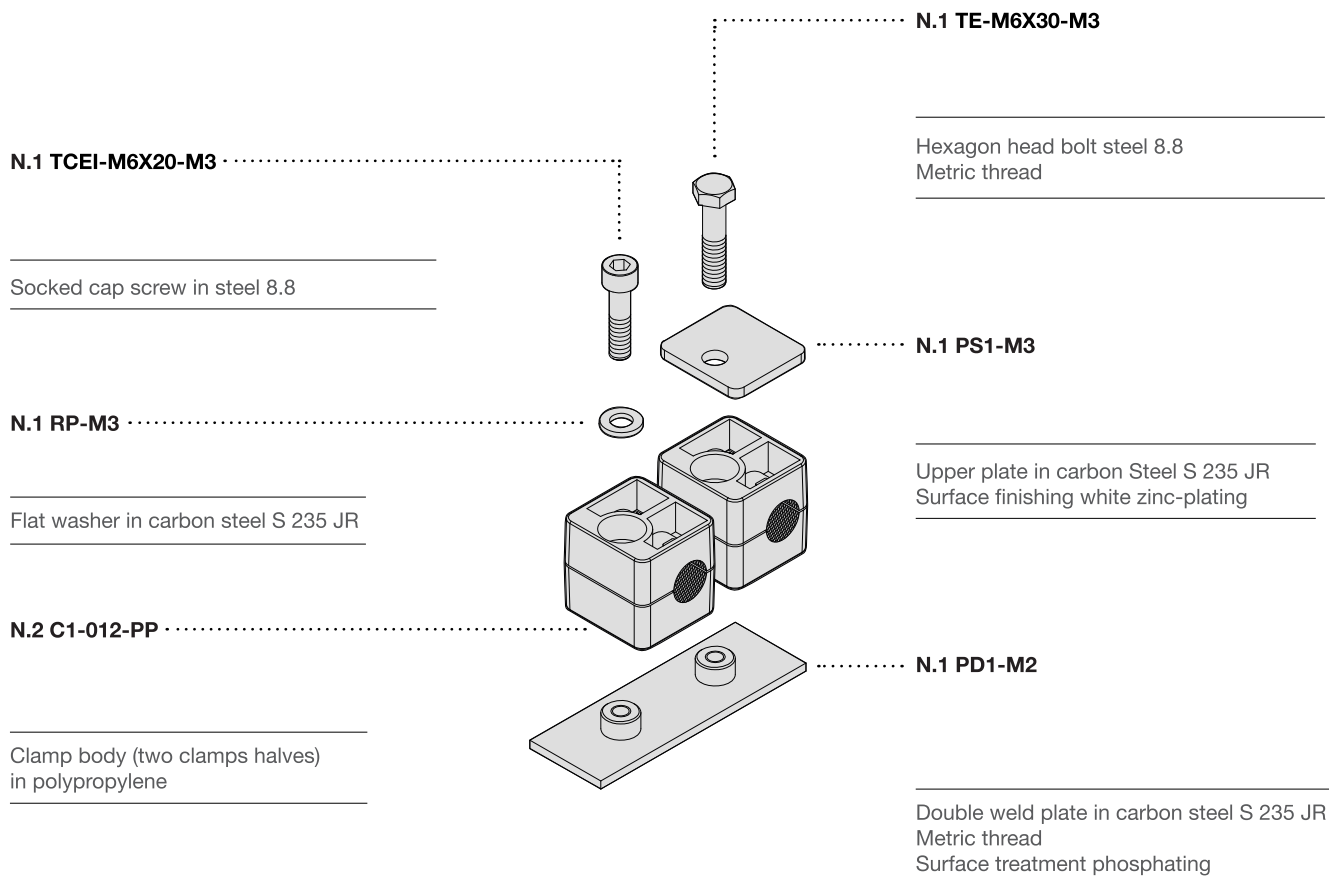
Complete C1 aluminium clamp for pipe with outside diameter 12mm with elongated plate with fixing holes and upper plate.



Pipe Clamps Standard Series DIN 3015-1

Mounting example 3

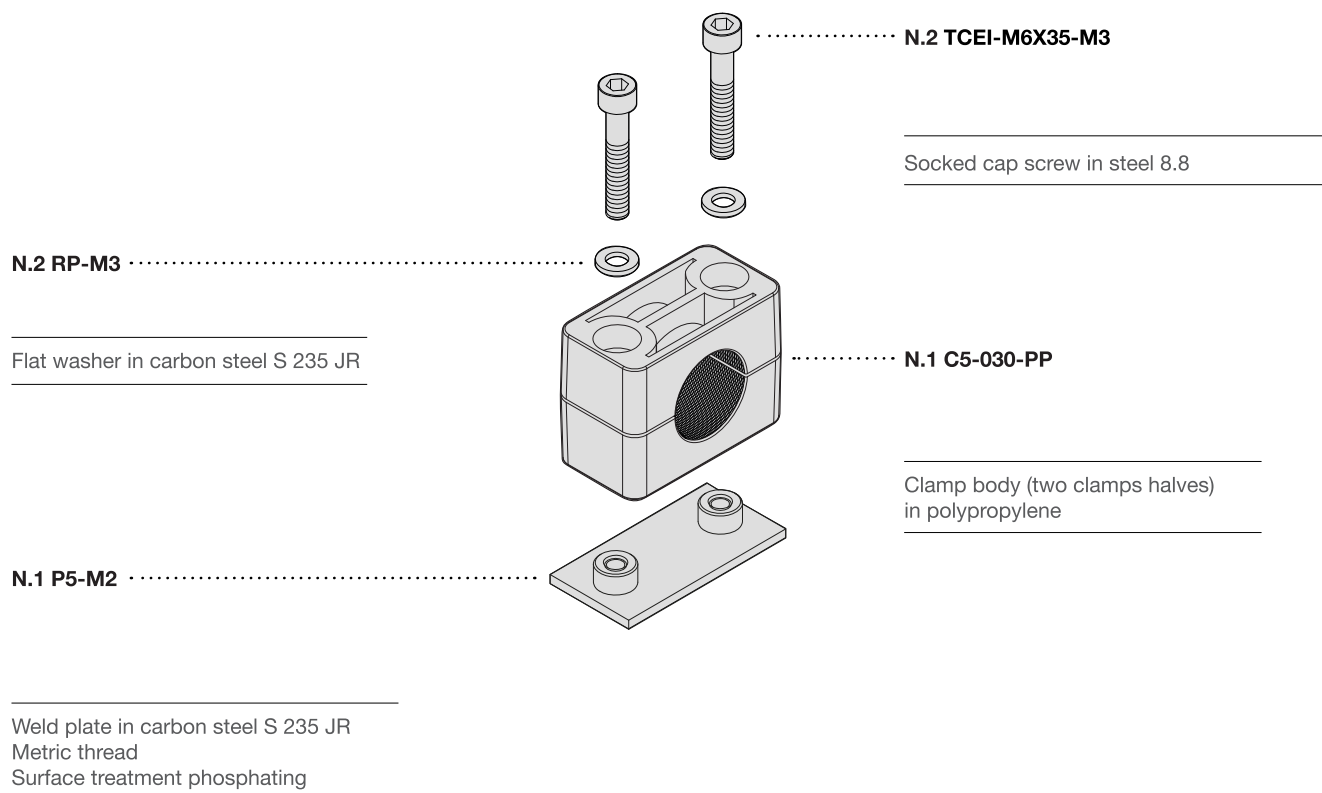
Complete side by side C1 polypropylene clamps for pipe with outside diameter 12mm with double weld plate, upper plate and safety washer.



Pipe Clamps Standard Series DIN 3015-1

Mounting example 4

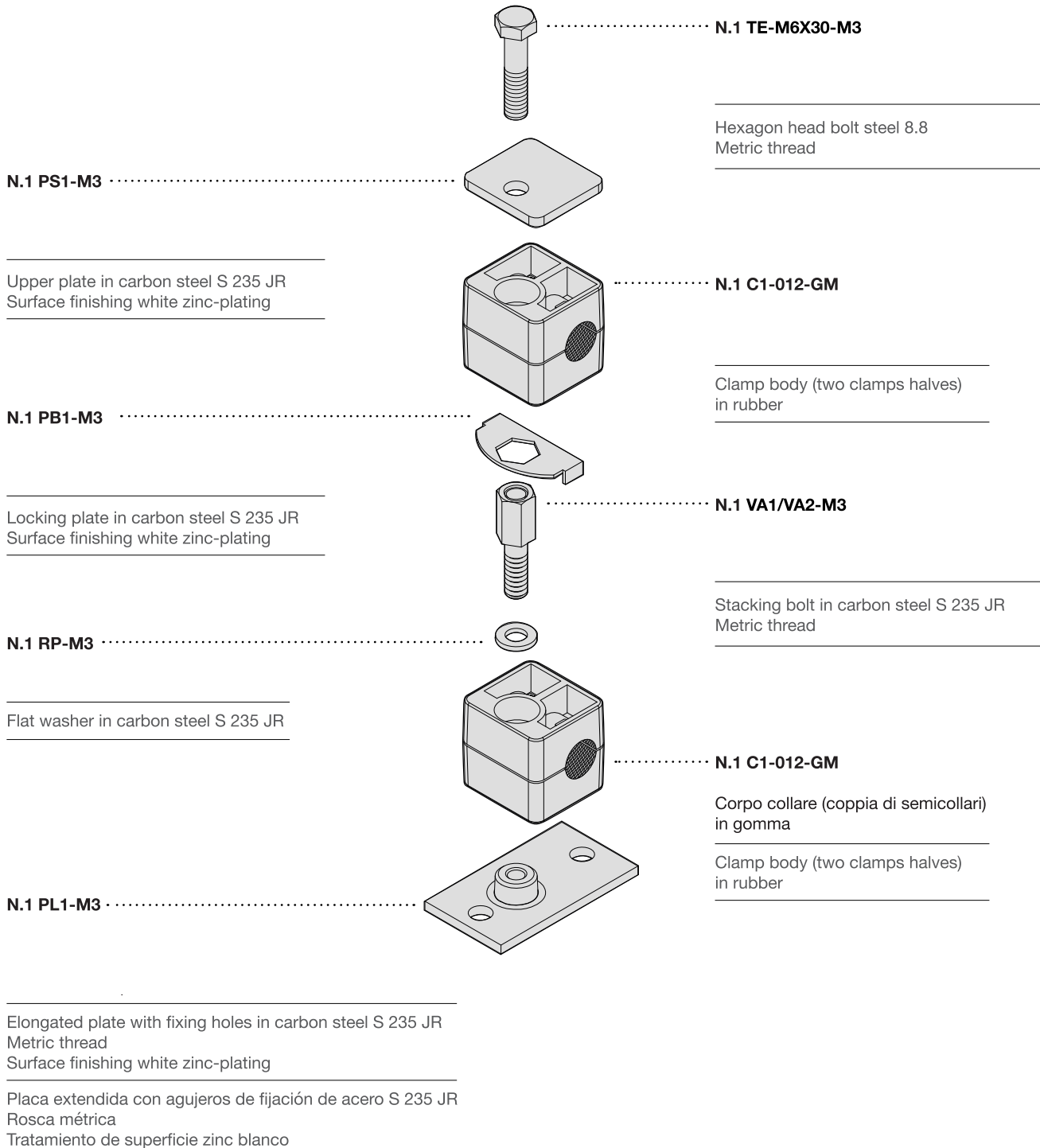
Complete C5 polypropylene clamp for pipe with outside diameter 30mm with single weld plate and safety washer.



Pipe Clamps Standard Series DIN 3015-1

Mounting example 5

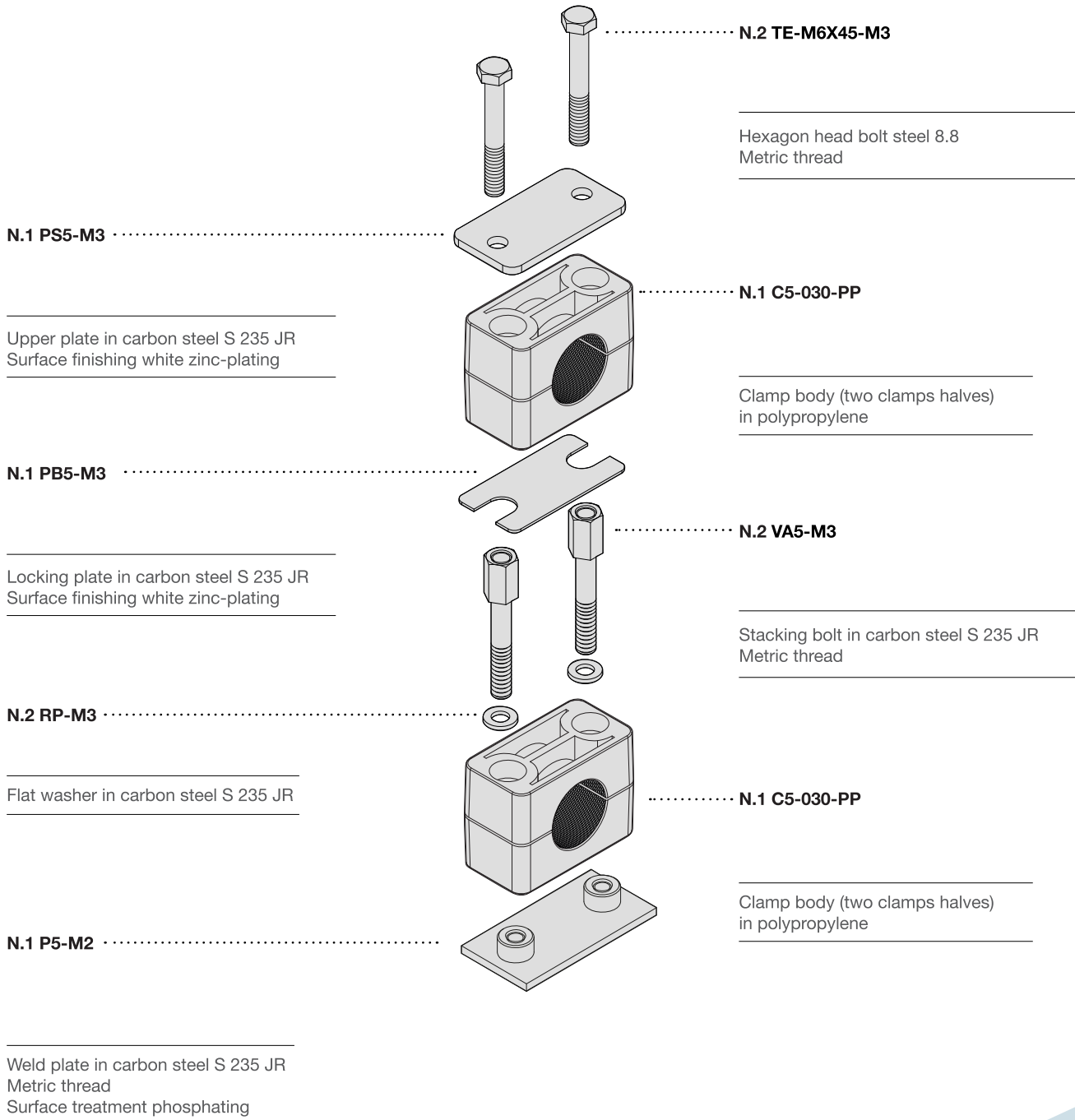
Complete stacked C1 rubber clamps for pipe with outside diameter 12mm with elongated plate with fixing holes and upper plate.



Pipe Clamps Standard Series DIN 3015-1

Mounting example 6

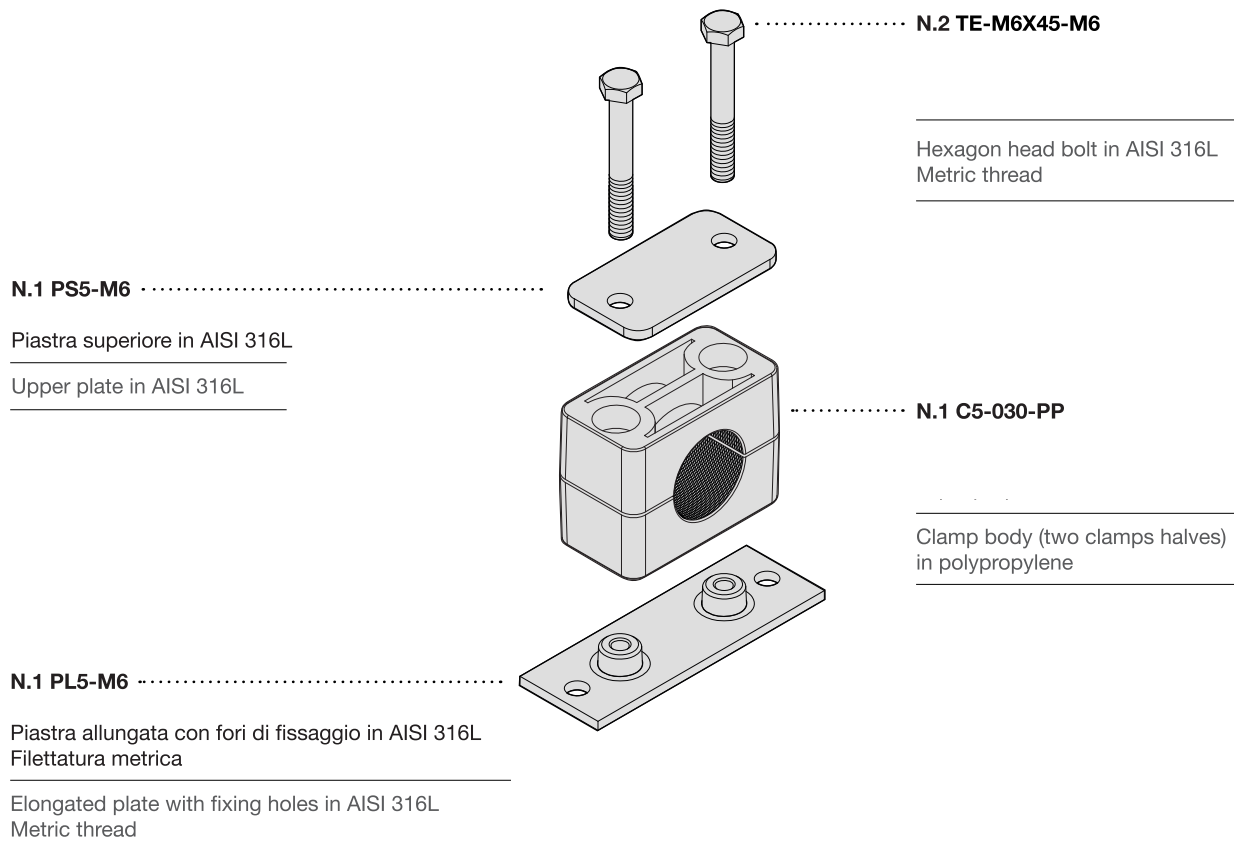
Complete stacked C5 polypropylene clamps for pipe with outside diameter 30mm with single weld plate and upper plate.



Pipe Clamps Standard Series DIN 3015-1

Mounting example 7

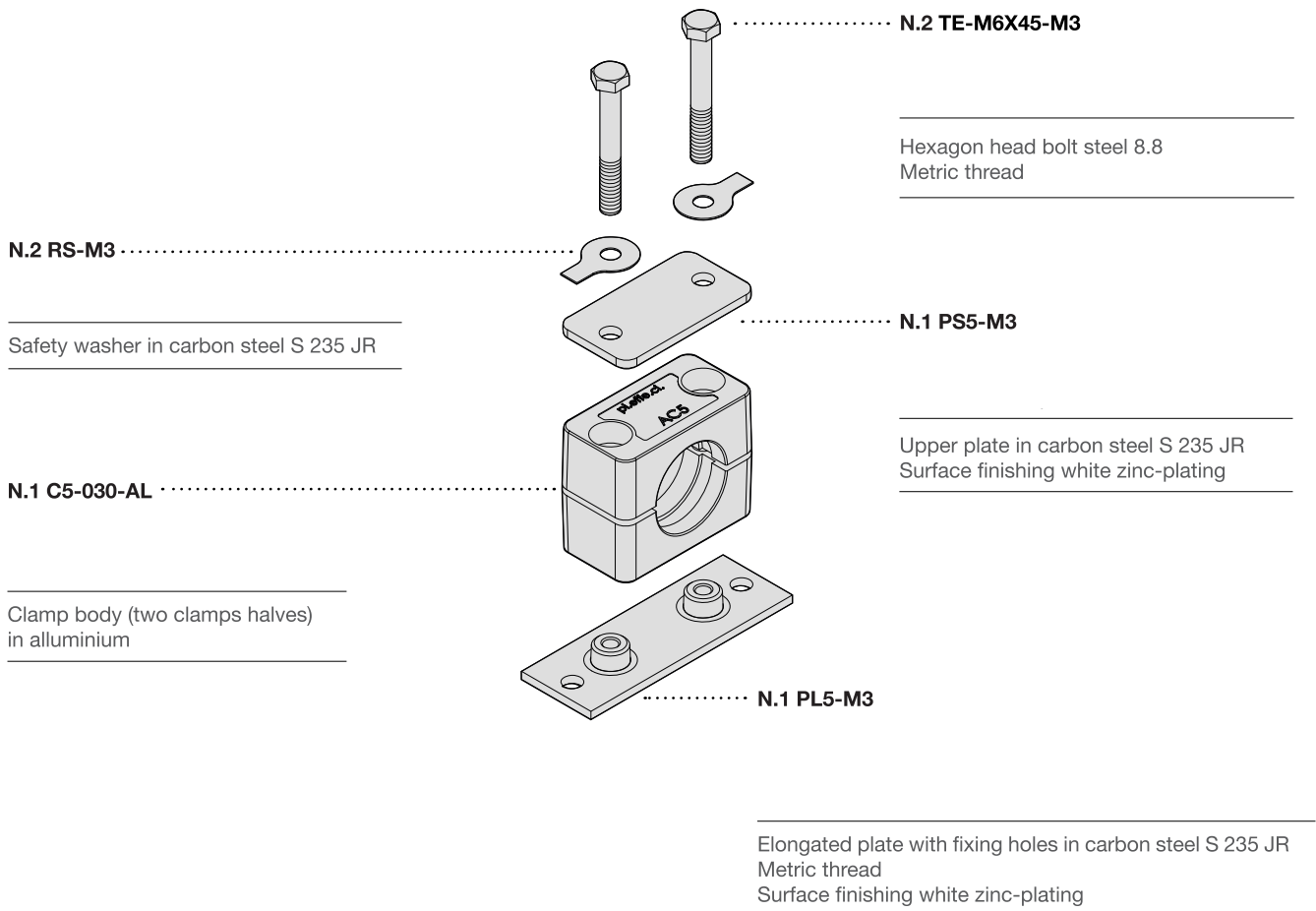
Complete C5 polypropylene clamp for pipe with outside diameter of 30mm with elongated plate with fixing holes and upper plate.



Pipe Clamps Standard Series DIN 3015-1

Mounting example 8

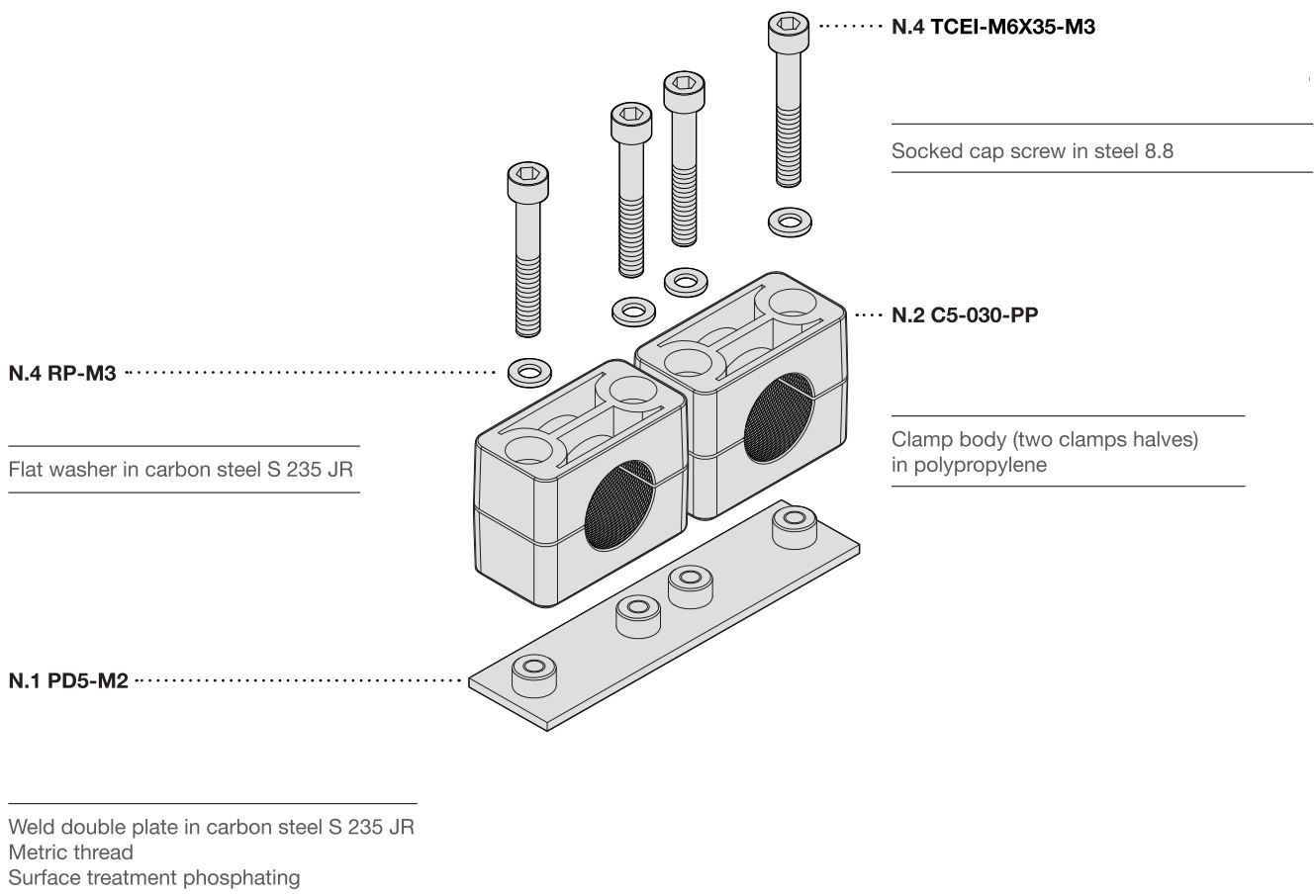
Complete C5 aluminium clamp for pipe with outside diameter of 30mm with elongated plate with fixing holes, upper plate and safety washer.



Pipe Clamps Standard Series DIN 3015-1

Mounting example 9

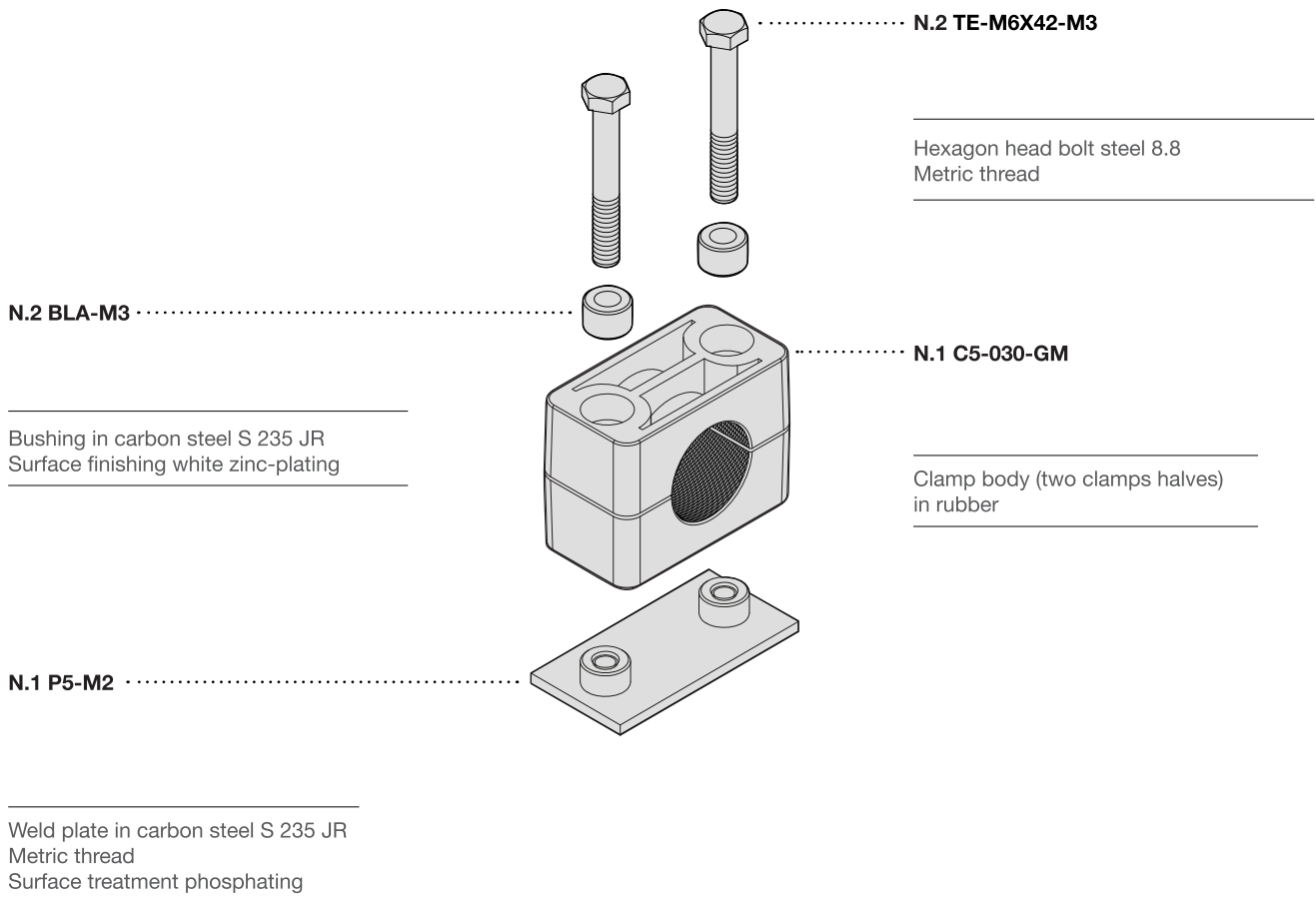
Complete side by side C5 polypropylene clamps for pipe with outside diameter 30mm with double weld plate and flat washer.



Pipe Clamps Standard Series DIN 3015-1

Mounting example 10

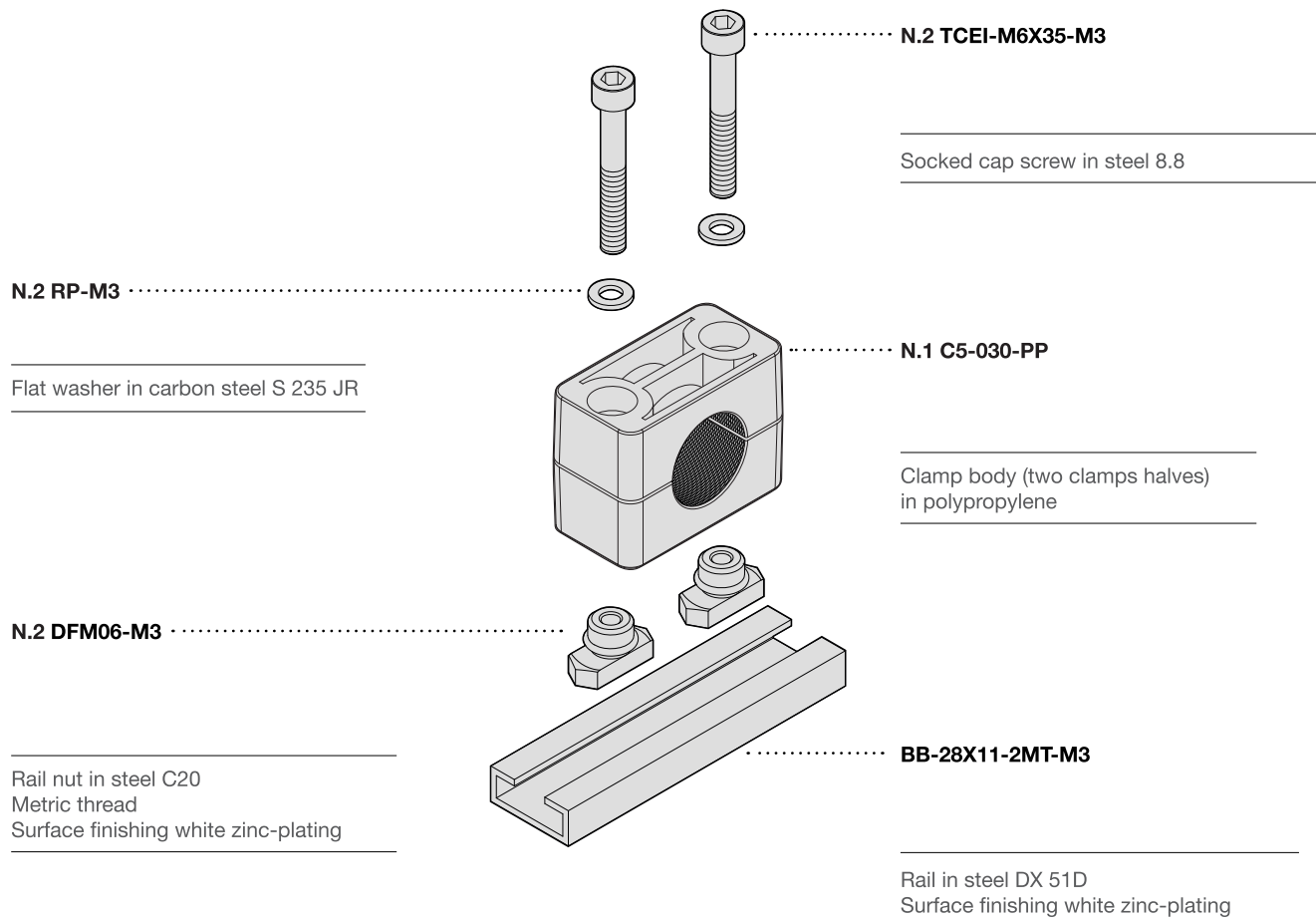
Complete C5 rubber clamp for pipe with outside diameter 30mm with single weld plate and bushing.



Pipe Clamps Standard Series DIN 3015-1

Mounting example 11

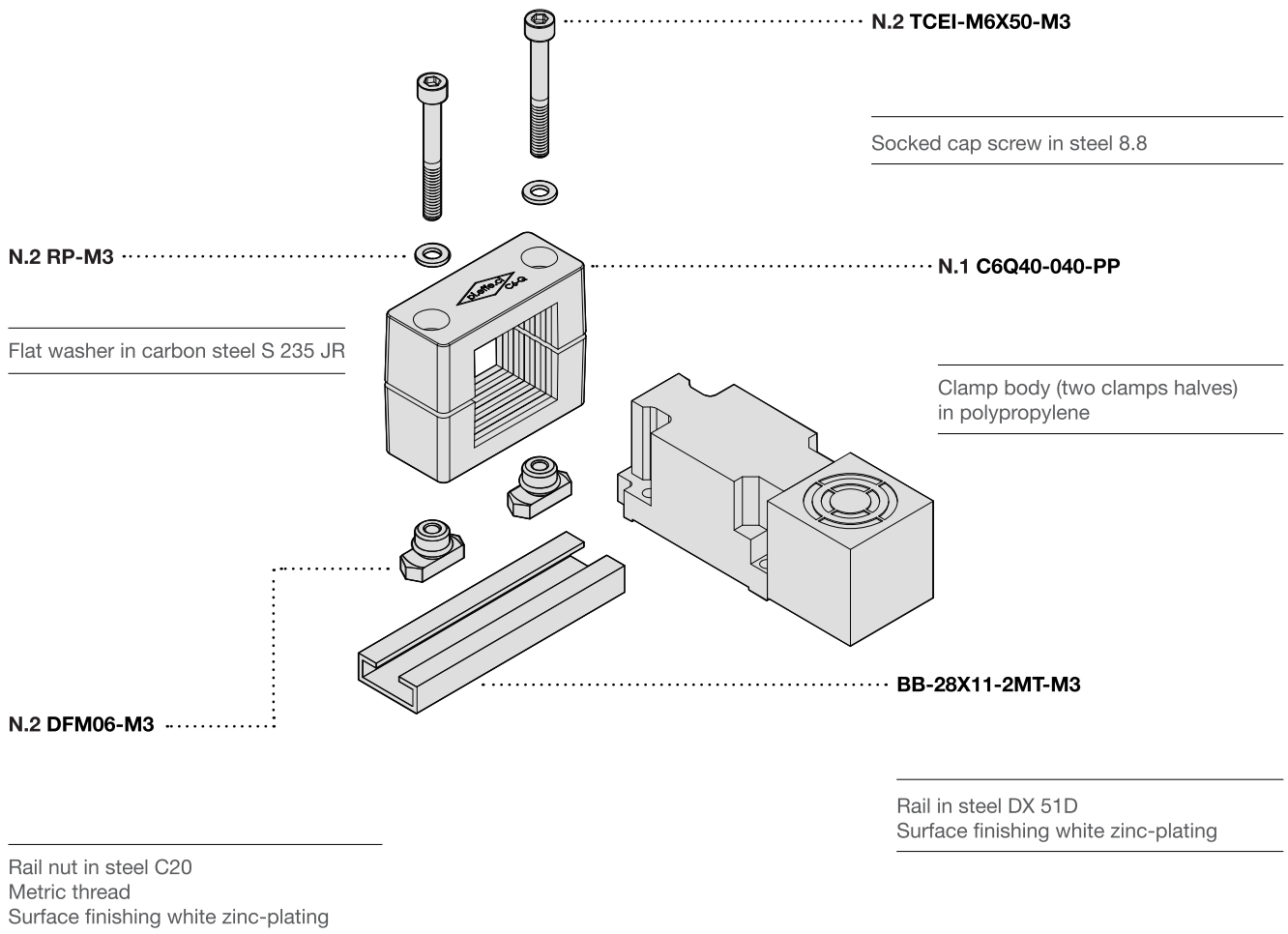
Complete C5 polypropylene clamp for pipe with outside diameter 30mm on mounting rail 28x11mm and flat washer.



Pipe Clamps Standard Series DIN 3015-1

Mounting example 12

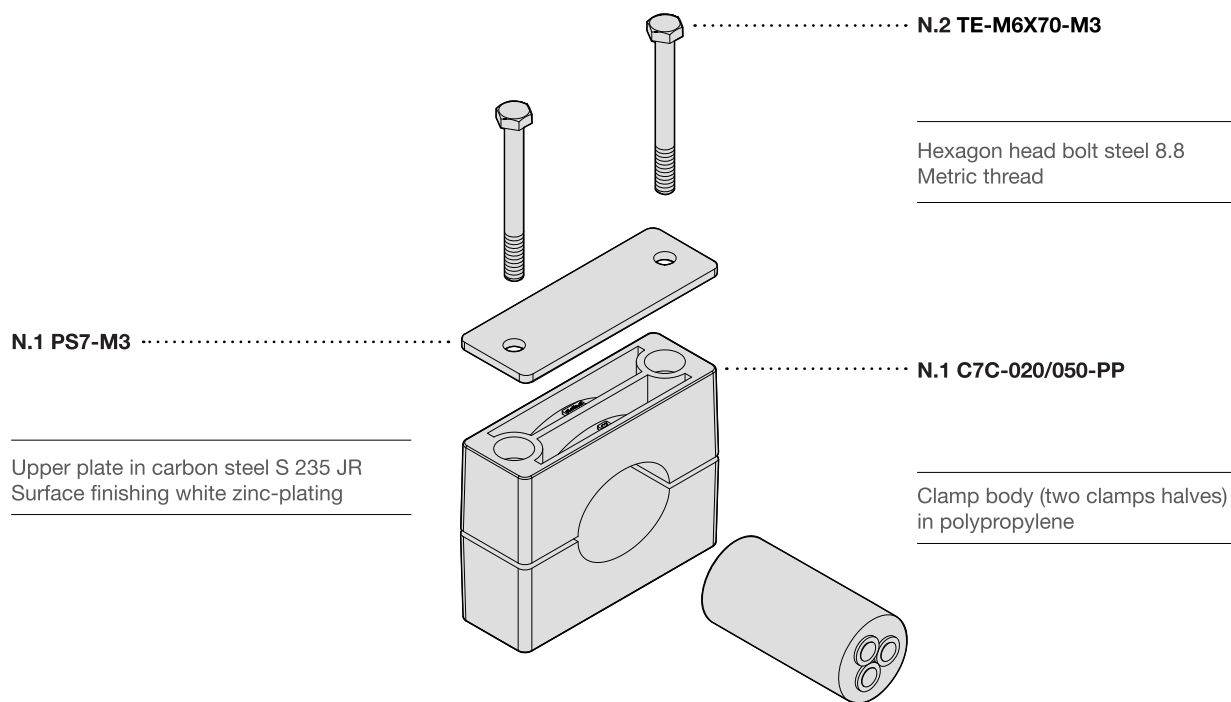
Proximity switches rectangular type.
Mounting C6Q clamp and standard series accessories. The use of the rail is recommended to facilitate axial and horizontal position adjustment.



Pipe Clamps Standard Series DIN 3015-1

Mounting example 13

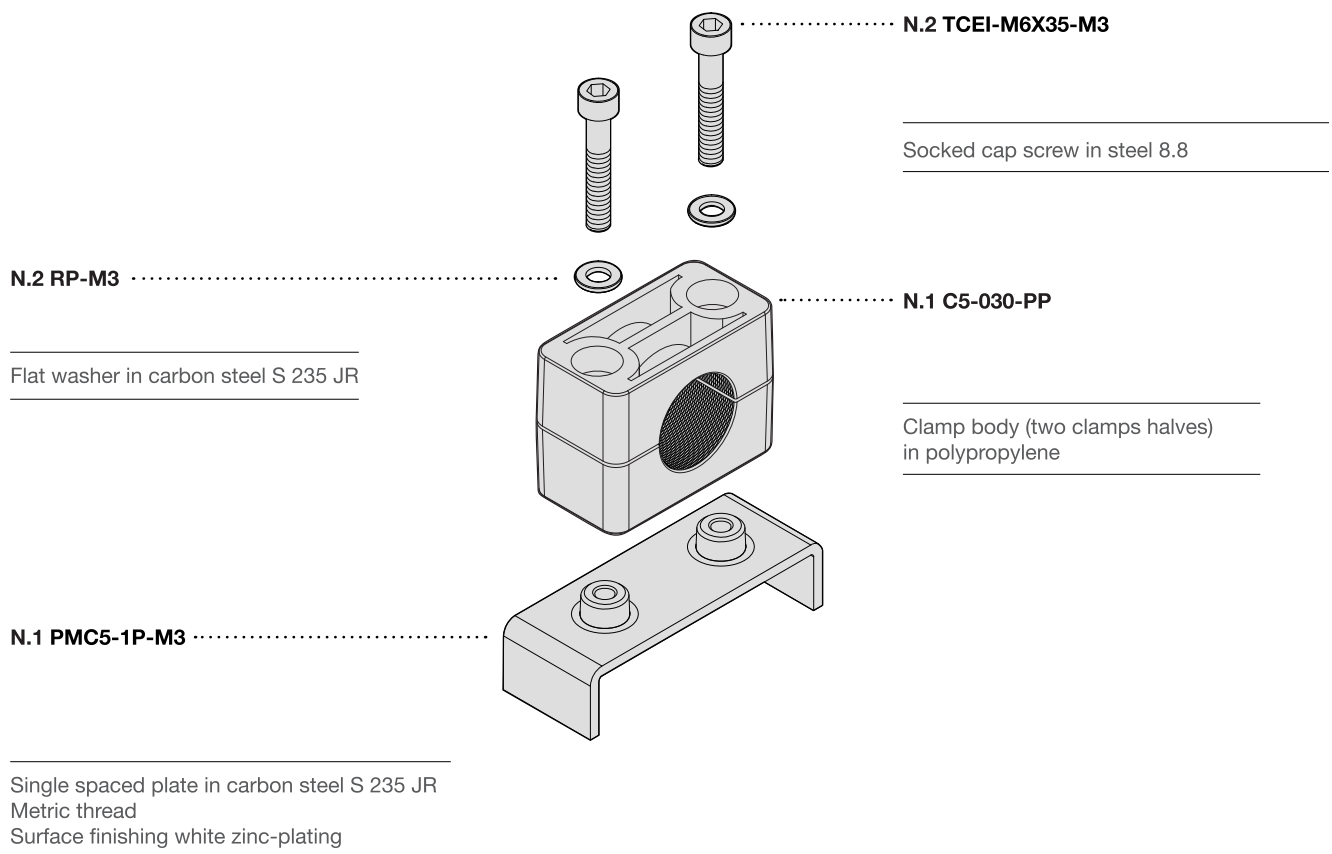
C7 C clamp with oval hole for fixing electric cables with outside diameters from 25mm to 50mm.



Pipe Clamps Standard Series DIN 3015-1

Mounting example 14

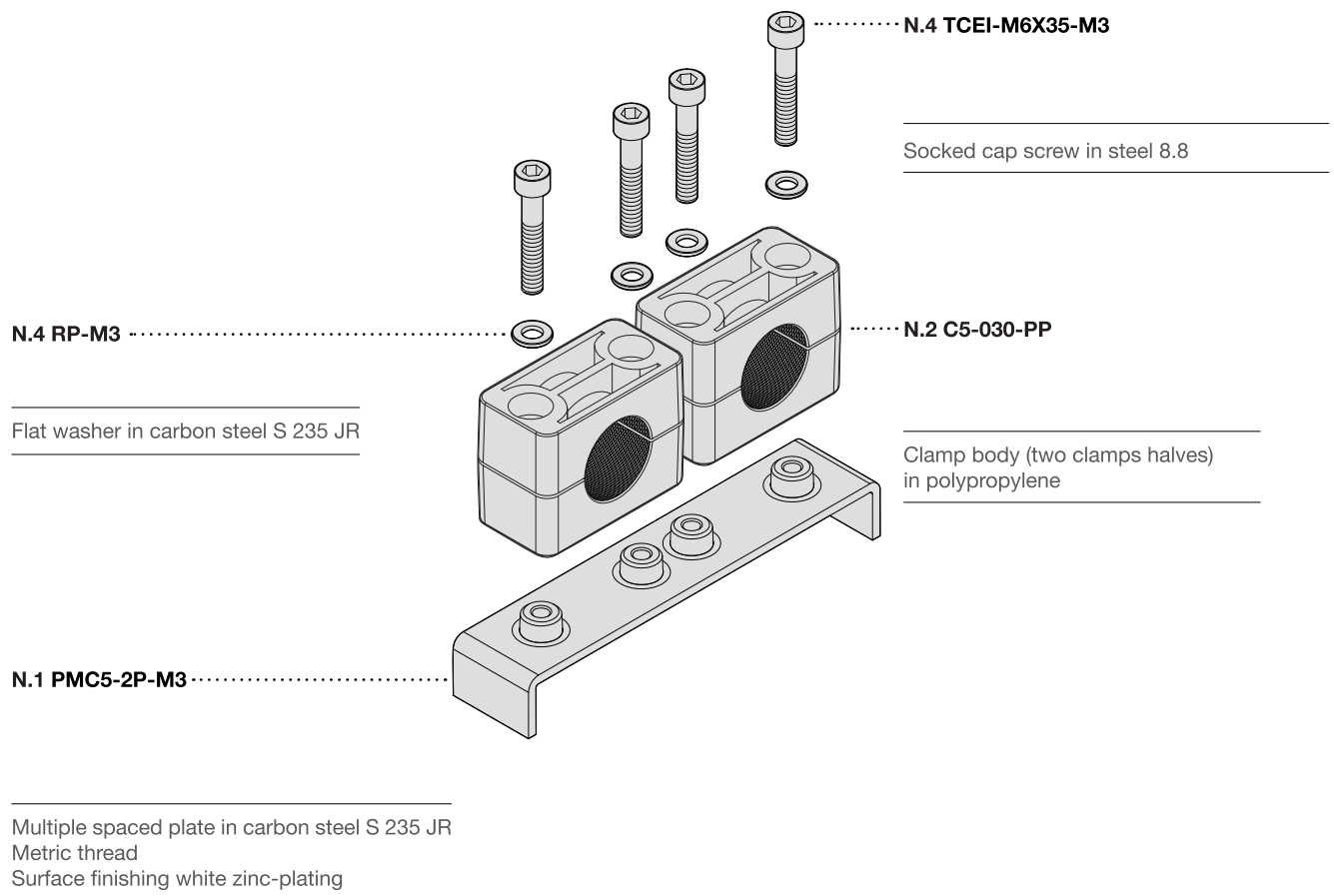
Complete C5 polypropylene clamp for pipe with outside diameter 30mm with single spaced plate and flat washer.



Pipe Clamps Standard Series DIN 3015-1

Mounting example 15

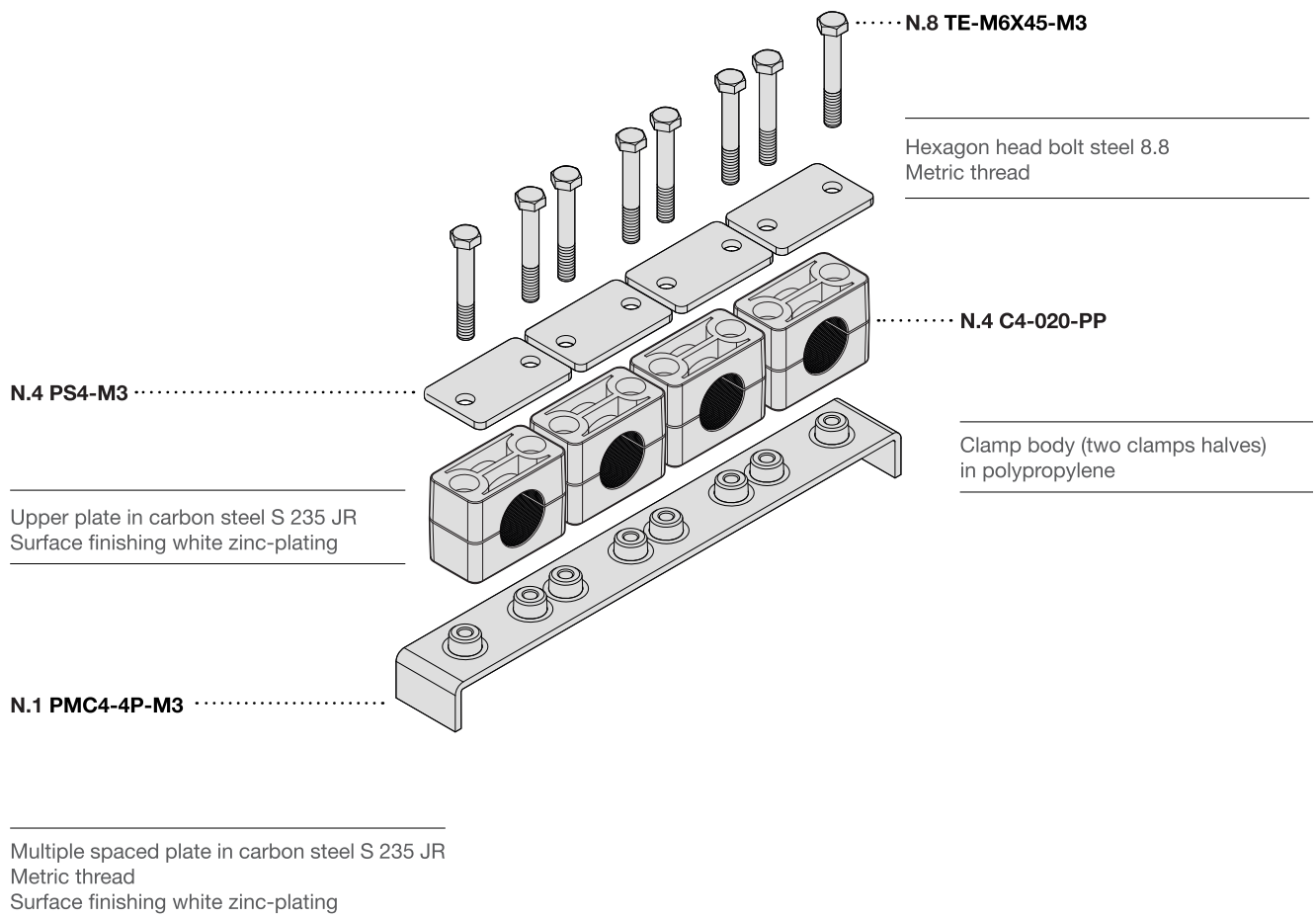
Complete C5 polypropylene clamps for pipe with outside diameter 30mm with multiple spaced plate with two positions and flat washer.



Pipe Clamps Standard Series DIN 3015-1

Mounting example 16

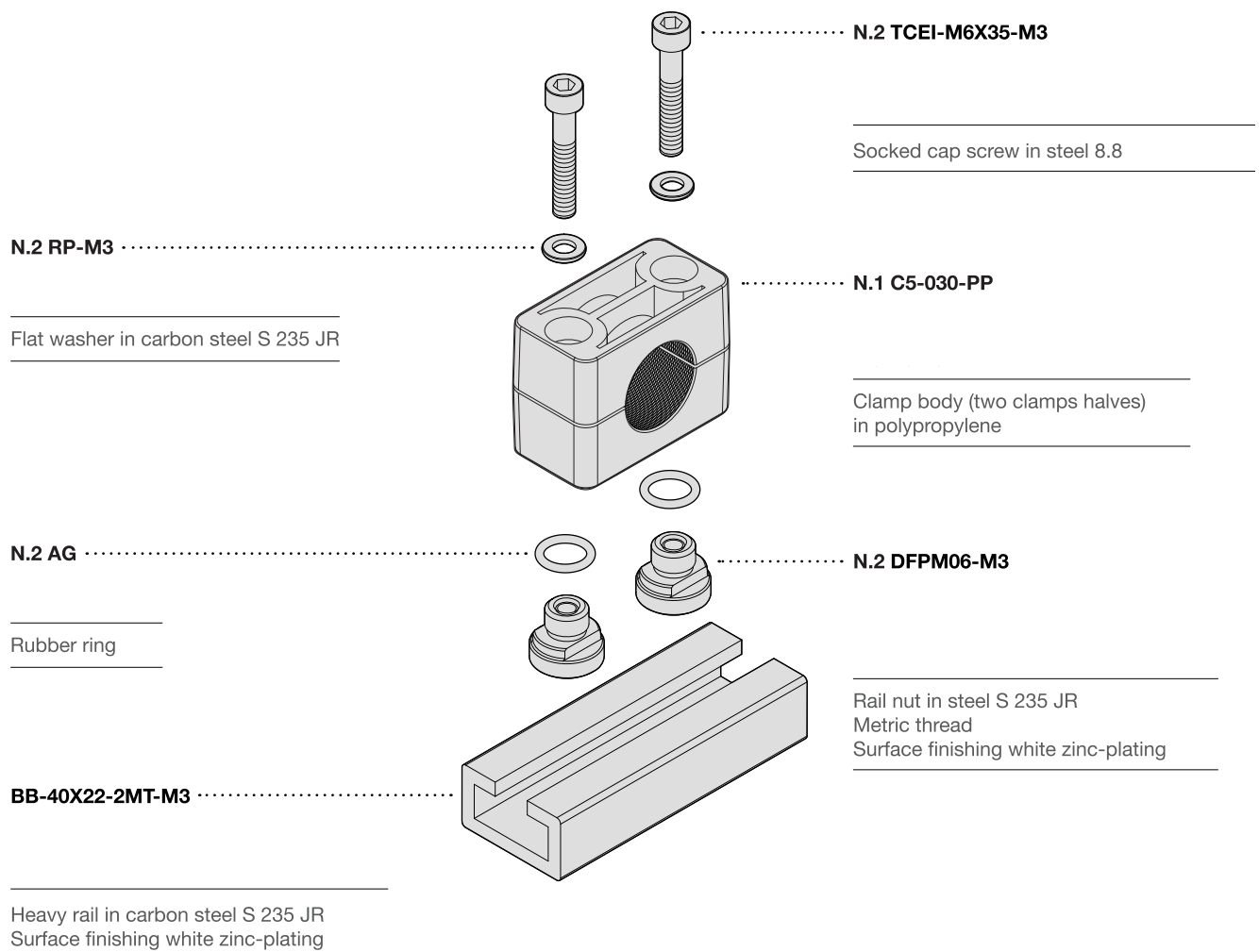
Complete C4 polypropylene clamps for pipe with outside diameter 20mm with upper plate and multiple spaced plate with four positions.



Pipe Clamps Standard Series DIN 3015-1

Mounting example 19

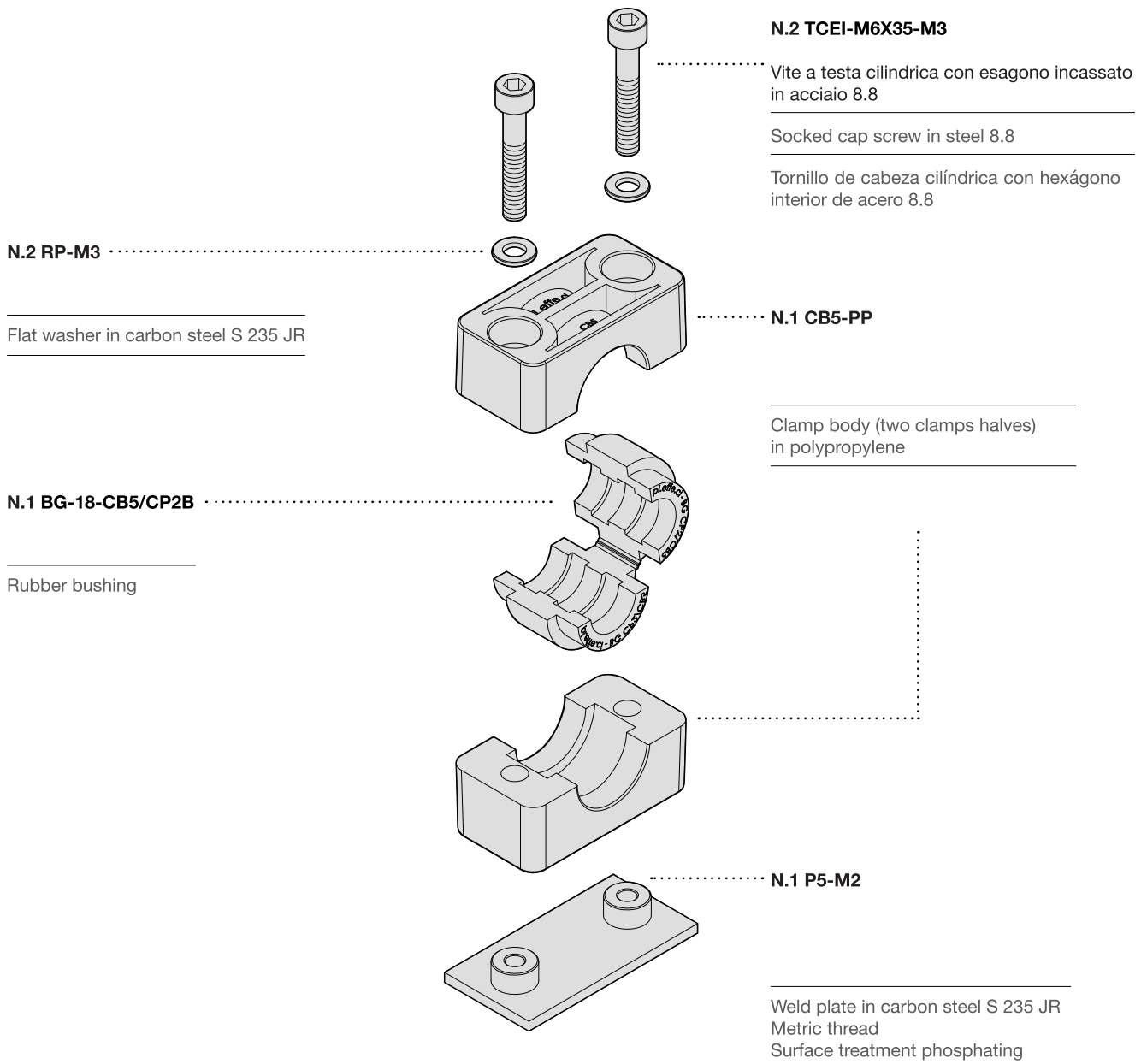
Complete C5 polypropylene clamp for pipe with outside diameter 30mm on heavy rail 40x22mm, with special nut and flat washer.



Pipe Clamps Standard Series DIN 3015-1

Mounting example 20

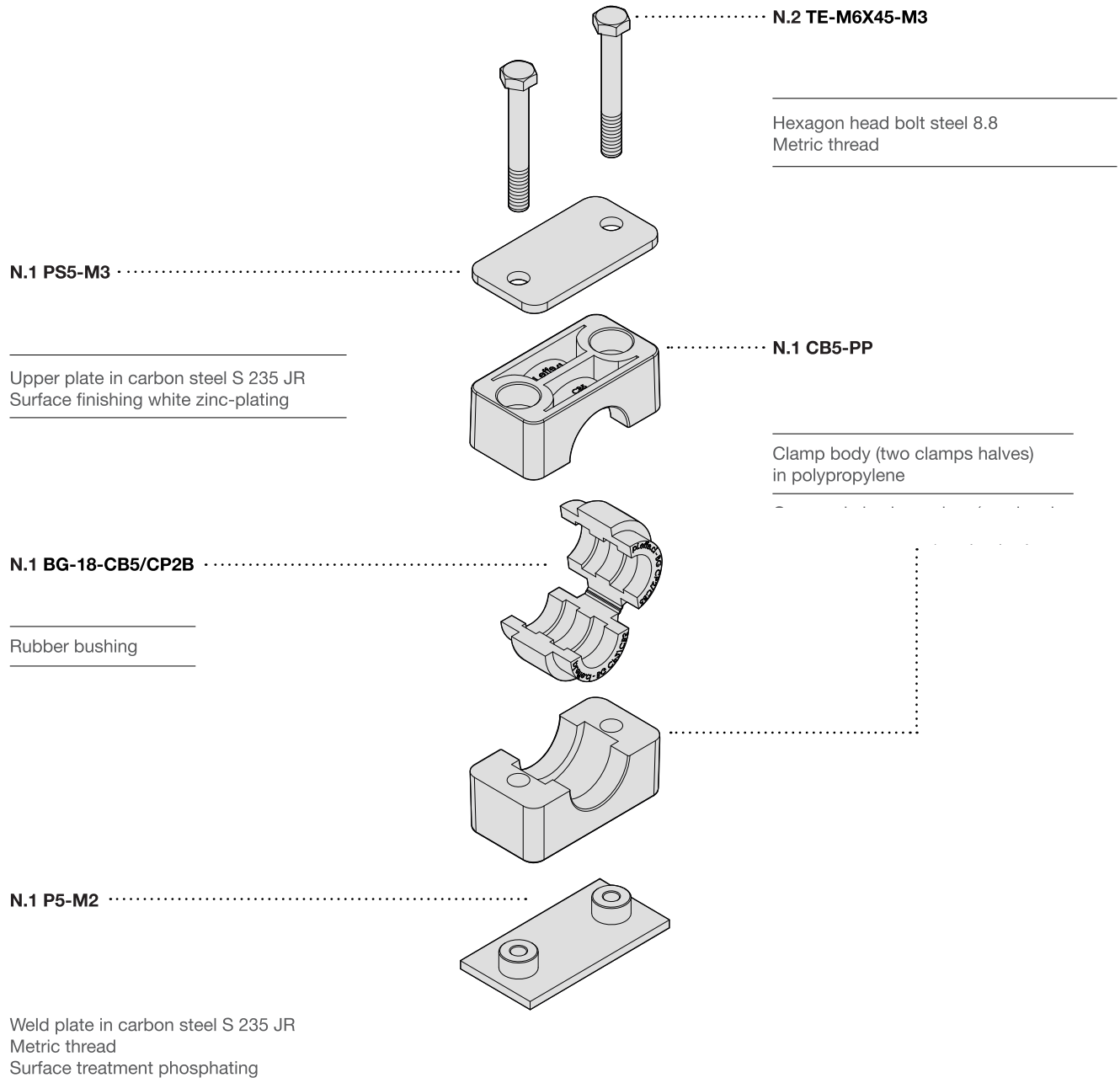
Complete CB5 polypropylene clamp with rubber bushing for pipe with outside diameter 18mm, single weld plate and flat washer.



Pipe Clamps Standard Series DIN 3015-1

Mounting example 19

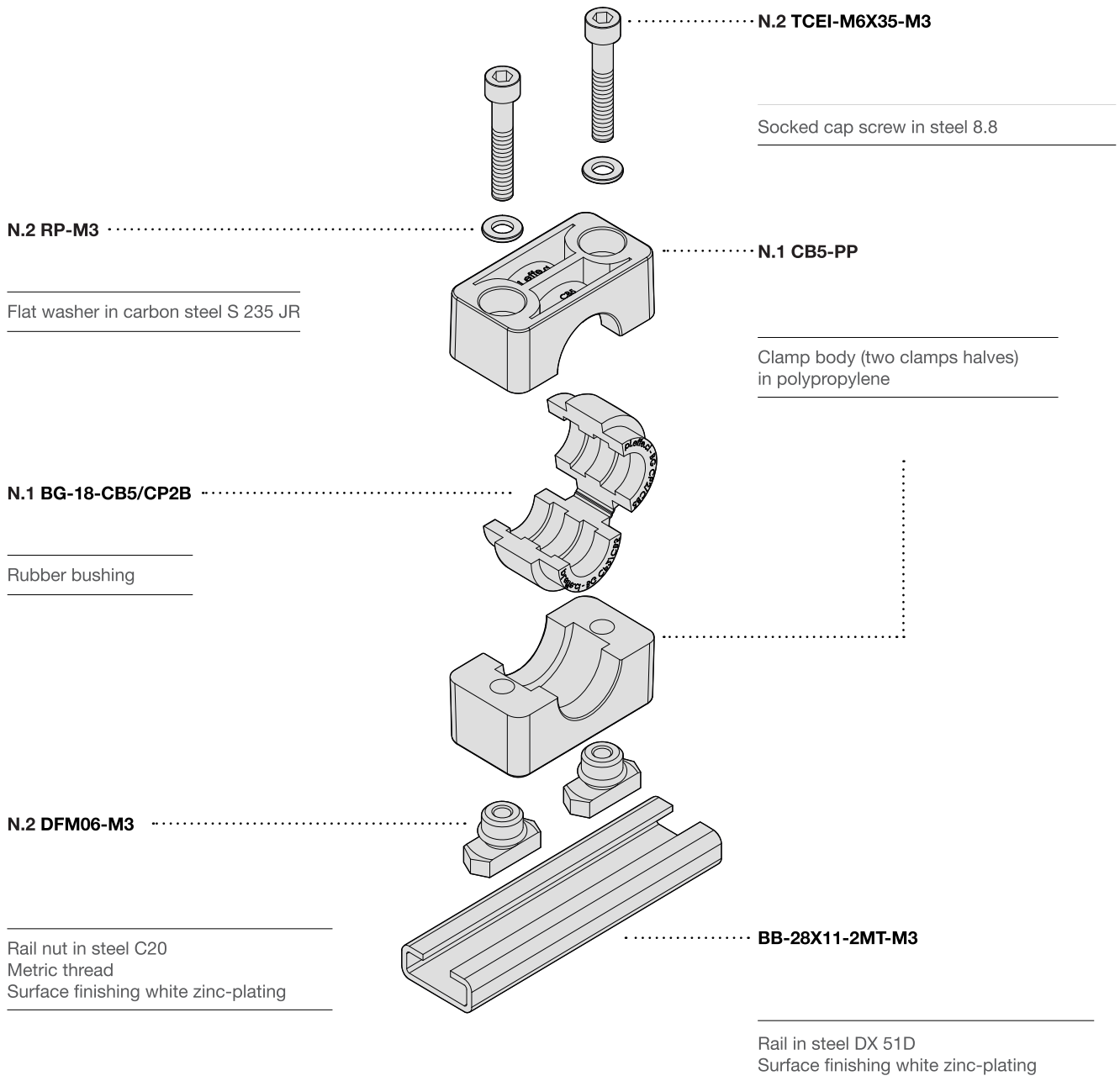
Complete CB5 polypropylene clamp with rubber bushing for pipe with outside diameter 18mm, single weld plate and upper plate.



Pipe Clamps Standard Series DIN 3015-1

Mounting example 20

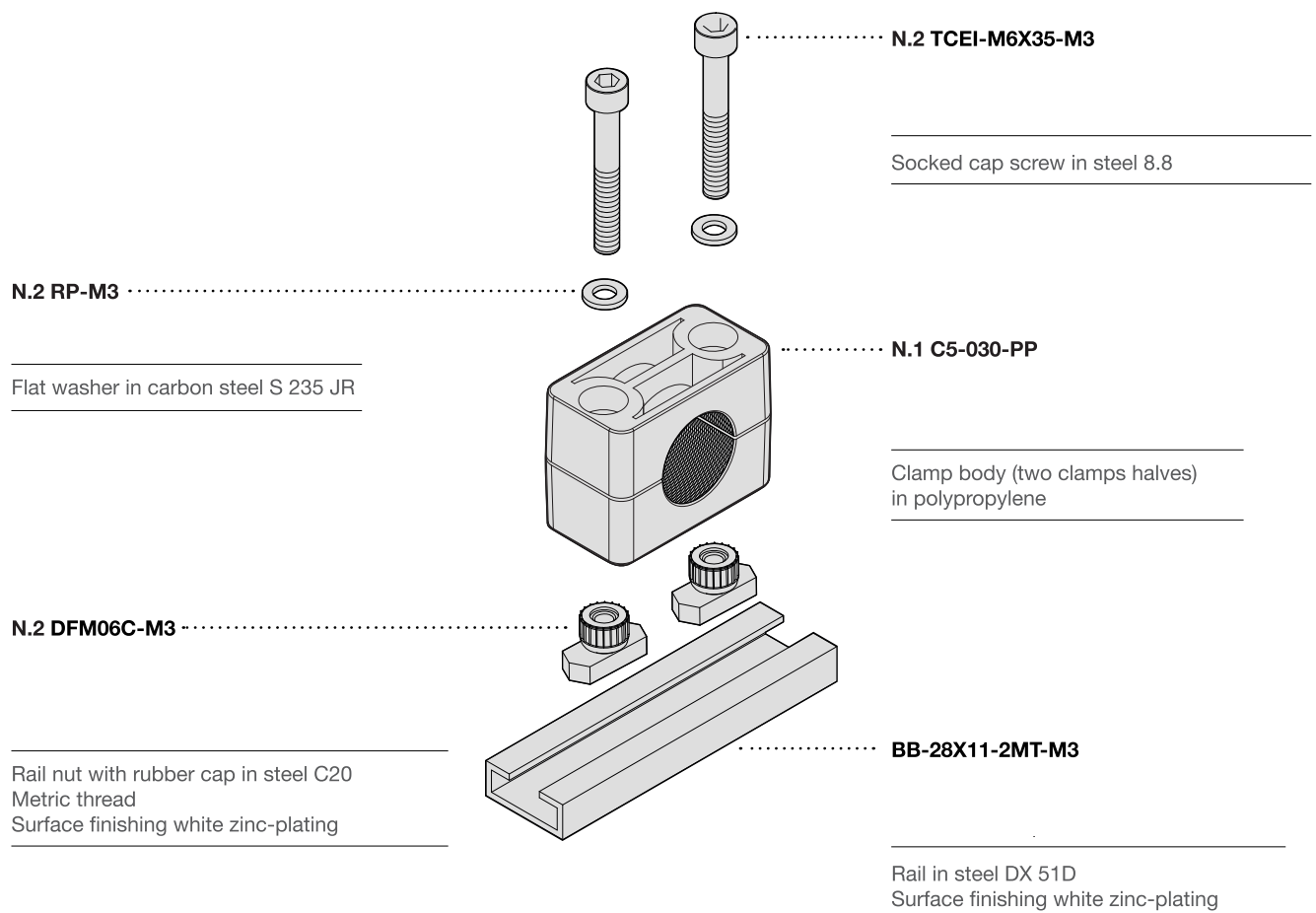
Complete CB5 polypropylene clamp with rubber bushing for pipe with outside diameter 18mm on mounting rail 28x11mm and flat washer.



Pipe Clamps Standard Series DIN 3015-1

Mounting example 21

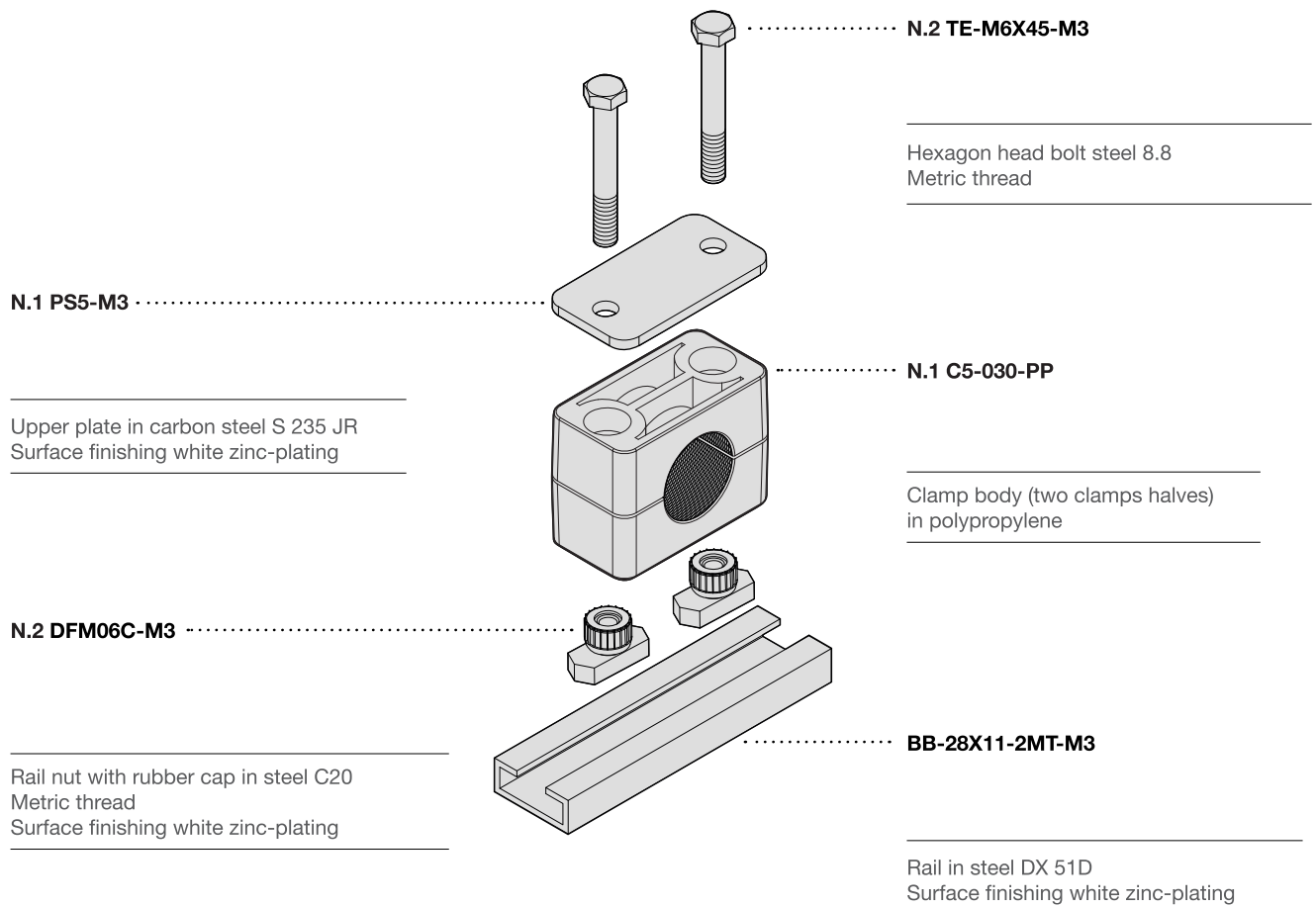
Complete C5 polypropylene clamp for pipe with outside diameter 30mm on mounting rail 28x11mm, with special nut and flat washer.



Pipe Clamps Standard Series DIN 3015-1

Mounting example 22

Complete C5 polypropylene clamp for pipe with outside diameter 30mm on mounting rail 28x11mm, with special nut and upper plate.



Pipe Clamps Standard Series DIN 3015-1

Mounting example 23

Complete side by side C5 polypropylene clamps for pipe with outside diameter 30mm with multiple weld plate, upper plate and flat washer.

N.6 TCEI-M6X35-M3

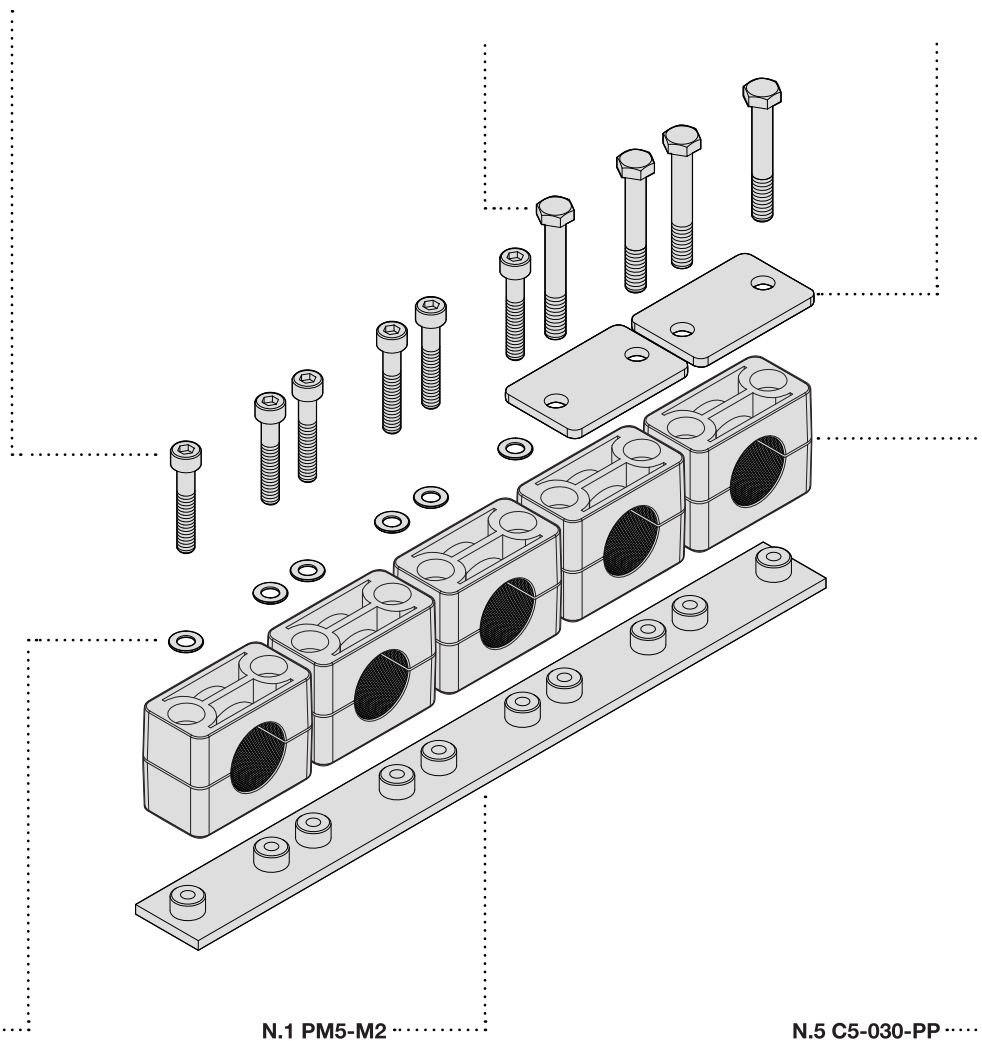
Socked cap screw in steel 8.8

N.4 TE-M6X45-M3

Hexagon head bolt steel 8.8
Metric thread

N.2 PS5-M3

Upper plate in carbon steel S 235 JR
Surface finishing white zinc-plating



N.6 RP-M3

Flat washer in carbon steel S 235 JR

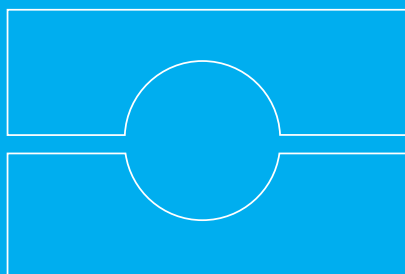
N.1 PM5-M2

Multiple weld plate in carbon steel S 235 JR
Metric thread
Surface treatment phosphating

N.5 C5-030-PP

Clamp body (two clamps halves)
in polypropylene

pieffeci



Flowteknik
Metalgangen 13
2690 Karlslunde
Danmark
Telefon +45 73 84 12 30
info@pgflowteknik.dk
www.pgflowteknik.dk