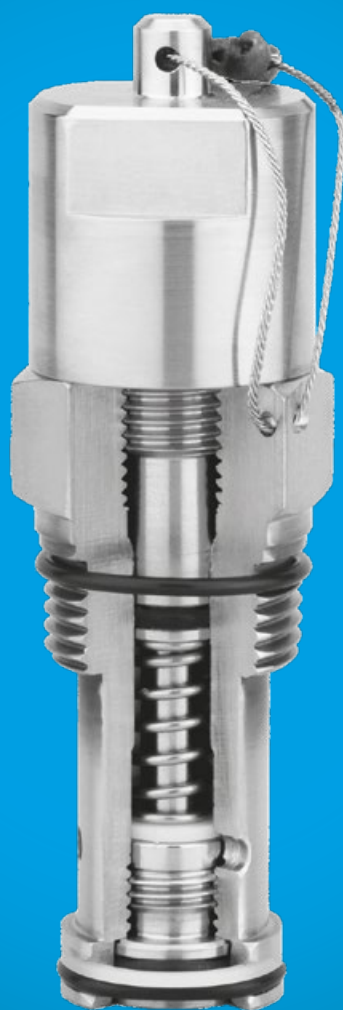


BIS VALVES

Relief Valves





Relief Valves

BiS offer a comprehensive range of stainless steel safety relief and relief valves for use on a wide range of media, from low pressure valves that vent to atmosphere, to high pressure (1379 bar, 20,000 psi) piped return valves. Typically, low pressure valves offer a pop-open characteristic, while higher pressure valves offer proportional or metering style operation.

BiS relief valves are CE marked to denote approval as Category IV safety accessories under the 2014/68/EU Pressure Equipment Directive.

Many options are available, including cartridge and manifold mounted versions, and many valves are available in exotic materials, including monel, inconel, hastelloy and titanium.



Contacts

BiS VALVES LTD

Unit 17 - 23, Kingfisher Park, West Moors, Wimborne, Dorset, BH21 6US, UK

Tel No: +44 (0)1202 896322

Email: salesadmin@bisvalves.co.uk

Fax No: +44 (0)1202 896718

Web: www.bisvalves.co.uk

Global Distributors

See www.bisvalves.co.uk for contact details



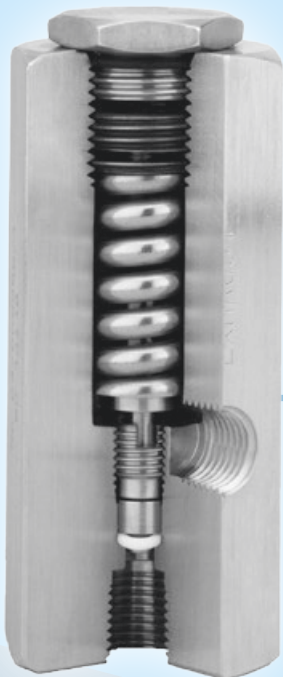
www.bisvalves.co.uk

	Connection	Max Pressure	Media	Valve Type
Safety Relief Valves	1/4"	40 bar (580 psi)	Liquids & Gases	S25 & TS25
	3/8"	40 bar (580 psi)	Liquids & Gases	S37 & TS37
	1/2"	40 bar (580 psi)	Liquids & Gases	S50 & TS50
	3/4"	40 bar (580 psi)	Liquids & Gases	S75 & TS75
	1"	28 bar (406 psi)	Liquids & Gases	S100 & TS100
Relief Valves	1/4"	1,379 bar (20,000 psi)	Liquids	RL25
	1/4"	414 bar (6,000 psi)	Liquids & Gases	RL25-G
	3/8"	1,379 bar (20,000 psi)	Liquids	RL37
	3/8"	414 bar (6,000 psi)	Liquids & Gases	RL37-G
	1/2"	1,034 bar (15,000 psi)	Liquids	RL50
	1/2"	414 bar (6,000 psi)	Liquids & Gases	RL50-G
	3/4"	1,034 bar (15,000 psi)	Liquids	RL75
	3/4"	414 bar (6,000 psi)	Liquids & Gases	RL75-G
	1"	207 bar (3,000 psi)	Liquids	RL100
	1"	207 bar (3,000 psi)	Liquids & Gases	RL100-G

Relief Valves

Safety Relief Valves

- ☑ Set pressures from 0.7 bar to 40 bar
- ☑ 1/4" to 1" ports, typically NPT or BSP
- ☑ Vent to atmosphere and threaded exhaust designs
- ☑ Pop open characteristic for maximum discharge capacity
- ☑ Elastomeric sealing technology for virtually zero leakage at 90% of set pressure
- ☑ Suitable for liquid and gas applications
- ☑ Various seal options available



Relief Valves

- ☑ Set pressures from 27 bar to 1379 bar
- ☑ 1/4" to 1" ports available
- ☑ NPT, BSP and medium pressure port options
- ☑ Subsea variants available
- ☑ Liquid and gas duty variants
- ☑ Various seal options
- ☑ Cartridge versions available

Relief Valves

We offer a comprehensive range of safety relief and relief valves for use on a wide range of media, from low pressure valves that vent to atmosphere, to high pressure (1379 bar, 20,000 psi) piped return valves. Typically, low pressure valves offer a pop-open style characteristic, while higher pressure valves offer proportional or metering style operation. BiS relief valves are CE marked to denote approval as Category IV safety accessories under the 2014/68/EU Pressure Equipment Directive. Many options are available, including cartridge and manifold mounted versions, and many valves are available in exotic materials via the factory, including monel, inconel, hastelloy and titanium.

[SAFETY RELIEF VALVE \(L.P.\) \(S25\)](#)

1/4" Stainless Steel Vent to Atmosphere Style Safety Relief Valve for Set Pressures from 0.7 to 40 bar, with Liquid or Gas. Approved as a Safety Accessory to Category IV of the Pressure Equipment Directive 2014/68/EU.

[SAFETY RELIEF VALVE \(L.P.\) \(S37\)](#)

3/8" Stainless Steel Vent to Atmosphere Style Safety Relief Valve for Set Pressures from 0.7 to 40 bar, with Liquid or Gas. Approved as a Safety Accessory to Category IV of the Pressure Equipment Directive 2014/68/EU.

[SAFETY RELIEF VALVE \(L.P.\) \(S50\)](#)

1/2" Stainless Steel Vent to Atmosphere Style Safety Relief Valve for Set Pressures from 0.7 to 40 bar, with Liquid or Gas. Approved as a Safety Accessory to Category IV of the Pressure Equipment Directive 2014/68/EU.

[SAFETY RELIEF VALVE \(L.P.\) \(S75\)](#)

3/4" Stainless Steel Vent to Atmosphere Style Safety Relief Valve for Set Pressures from 0.7 to 40 bar, with Liquid or Gas. Approved as a Safety Accessory to Category IV of the Pressure Equipment Directive 2014/68/EU.

[SAFETY RELIEF VALVE \(L.P.\) \(S100\)](#)

1" Stainless Steel Vent to Atmosphere Style Safety Relief Valve for Set Pressures from 0.7 to 18 bar, with Liquid or Gas. Approved as a Safety Accessory to Category IV of the Pressure Equipment Directive 2014/68/EU.

[SAFETY RELIEF VALVE \(L.P.\) \(TS25\)](#)

1/4" Stainless Steel Safety Relief Valve for set pressures from 0.7 to 40 bar, with liquid or gas. Approved as a Safety Accessory to Category IV of the Pressure Equipment Directive 2014/68/EU.

[SAFETY RELIEF VALVE \(L.P.\) \(TS37\)](#)

3/8" Stainless Steel Safety Relief Valve for set pressures from 0.7 to 40 bar, with liquid or gas. Approved as a Safety Accessory to Category IV of the Pressure Equipment Directive 2014/68/EU.

[SAFETY RELIEF VALVE \(L.P.\) \(TS50\)](#)

1/2" Stainless Steel Safety Relief Valve for set pressures from 0.7 to 40 bar, with liquid or gas. Approved as a Safety Accessory to Category IV of the Pressure Equipment Directive 2014/68/EU.

SAFETY RELIEF VALVE (L.P.) (TS75)

3/4" Stainless Steel Safety Relief Valve for set pressures from 0.7 to 40 bar, with liquid or gas. Approved as a Safety Accessory to Category IV of the Pressure Equipment Directive 2014/68/EU.

SAFETY RELIEF VALVE (L.P.) (TS100)

1" Stainless Steel Safety Relief Valve for set pressures from 0.7 to 28 bar, with liquid or gas. Approved as a Safety Accessory to Category IV of the Pressure Equipment Directive 2014/68/EU.

CARTRIDGE RELIEF VALVE (L.P.) (TS25C)

1/4" Stainless Steel Cartridge Style Safety Relief Valve for incorporation into manifolds, where low set pressures are required. Approved as a Safety Accessory to Category IV of the Pressure Equipment Directive 2014/68/EU.

RELIEF VALVE (H.P.) (HS25)

1/4" Stainless Steel Vent to Atmosphere Style Relief Valve for set pressures from 400 to 2,000 psi, with liquid or gas. Approved as a Safety Accessory to Category IV of the Pressure Equipment Directive 2014/68/EU.

RELIEF VALVE (H.P.) (RL25)

1/4" Stainless Steel Relief Valve for pressures up to 15,000 psi. Approved as a Safety Accessory to Category IV of the Pressure Equipment Directive 2014/68/EU.

RELIEF VALVE (H.P.) (RL37)

3/8" Stainless Steel Relief Valve for pressures up to 15,000 psi. Approved as a Safety Accessory to Category IV of the Pressure Equipment Directive 2014/68/EU.

RELIEF VALVE (H.P.) (RL25-G)

1/4" Stainless Steel Relief Valve with Soft Seats for pressures up to 6,000 psi with liquid or gas. Approved as a Safety Accessory to Category IV of the Pressure Equipment Directive 2014/68/EU.

RELIEF VALVE (H.P.) (RL37-G)

3/8" Stainless Steel Relief Valve with Soft Seats for pressures up to 6,000 psi with liquid or gas. Approved as a Safety Accessory to Category IV of the Pressure Equipment Directive 2014/68/EU.

CARTRIDGE RELIEF VALVE (H.P.) (RL25C)

1/4" Stainless Steel Cartridge Style Relief Valve for pressures up to 15,000 psi. Approved as a Safety Accessory to Category IV of the Pressure Equipment Directive 2014/68/EU.

RELIEF VALVE (H.P.) (RL25M)

1/4" Stainless Steel Manifold Mounted Style Relief Valve for pressures up to 15,000 psi. Approved as a Safety Accessory to Category IV of the Pressure Equipment Directive 2014/68/EU.

RELIEF VALVE (H.P.) (RL50)

1/2" Stainless Steel Relief Valve for pressures up to 15,000 psi. Approved as a Safety Accessory to Category IV of the Pressure Equipment Directive 2014/68/EU.

Relief Valves

RELIEF VALVE (H.P.) (RL50-G)

1/2" Stainless Steel Relief Valve with Soft Seats for pressures up to 6,000 psi with liquid or gas. Approved as a Safety Accessory to Category IV of the Pressure Equipment Directive 2014/68/EU.

RELIEF VALVE (H.P.) (RL50M)

1/2" Stainless Steel Manifold Mounted Style Relief Valve for pressures up to 15,000 psi. Approved as a Safety Accessory to Category IV of the Pressure Equipment Directive 2014/68/EU.

RELIEF VALVE (H.P.) (RL75)

3/4" Stainless Steel Relief Valve for pressures up to 15,000 psi. Approved as a Safety Accessory to Category IV of the Pressure Equipment Directive 2014/68/EU.

RELIEF VALVE (H.P.) (RL75-G)

3/4" Stainless Steel Relief Valve with Soft Seats for pressures up to 6,000 psi with liquid or gas. Approved as a Safety Accessory to Category IV of the Pressure Equipment Directive 2014/68/EU.

CARTRIDGE RELIEF VALVE (H.P.) (PRV75C)

3/4" Stainless Steel Cartridge Style Relief Valve for pressures up to 6,000 psi. Approved as a Safety Accessory to Category IV of the Pressure Equipment Directive 2014/68/EU.

RELIEF VALVE (H.P.) (RL100)

1" Stainless Steel Relief Valve for pressures up to 3,000 psi. Approved as a Safety Accessory to Category IV of the Pressure Equipment Directive 2014/68/EU.

RELIEF VALVE (H.P.) (RL100-G)

1" Stainless Steel Relief Valve with Soft Seats for pressures up to 3,000 psi with liquid or gas. Approved as a Safety Accessory to Category IV of the Pressure Equipment Directive 2014/68/EU.



Metalgangen 13
DK-2690 Karlslunde
Denmark
Phone (+45) 73 84 12 30
info@pgflowtechnik.dk
www.pgflowtechnik.dk

