

Rotarex Diaphragm Valves

RX04 | RX04F | RX08 | RX08F | RX12 | RX20



Index

RX04 Diaphragm valve	<u>3</u>
RX04F Diaphragm valve	<u>7</u>
RX08 Diaphragm valve	<u>10</u>
RX08F Diaphragm valve	<u>13</u>
RX12 Diaphragm valve	<u>16</u>
RX20 Diaphragm valve	<u>20</u>

RX04



DIAPHRAGM VALVE

- 100% Helium Leak Test performed
- Assembling, testing & Packaging in cleanroom: Class ISO 4
- Reverse seat design for high life cycle
- Individual serial number for full traceability
- Electropolished surface roughness per SEMI F19 UHP Grade
- Fluid specific seat material as standard options
- Low internal volume
- Constant bleed option available
- UHP Material - Semi F20 option available
- Additional Multi-port options
- 270° multiturn handwheel with open/close indicator
- Loto option
- Pneumatic version available
- Indicative switch option



RX04 - High performance UHP line valves

SPECIFICATIONS

Max. inlet pressure See table below	Pneumatic actuator opening pressure 5 to 7 bar (70 to 100 psig)	Certified max. Helium outboard leak rate $\leq 1 \times 10^{-9}$ mbar.l/s
Temperature range See table below	Nominal seat diameter 4 mm (0.16")	Certified max. Helium across the seat leak rate (at max. pressure) $\leq 1 \times 10^{-9}$ mbar.l/s
Wetted volume < 1.2 cm ³	Flow capacity (Cv) 0.2	Certified max. Helium inboard leak rate (at max. pressure) $\leq 1 \times 10^{-9}$ mbar.l/s
Burst pressure > 700 bar (10,150 psig)		

CONSTRUCTION MATERIAL

	Parts	Material
Wetted parts	Body	SS 316L,UHP Material - Semi F20
	Seat	PCTFE, PVDF, Polyimid
	Diaphragm	Phynox®
Non-wetted parts	Backup diaphragm	Phynox®
	Handwheel	Aluminium (QT) or Plastic (MT)
	Actuator Body	SS 316L or Aluminium
	Others	Stainless Steel, Alloys, brass

SURFACE FINISH

S	Ra 0.4 µm (15 µin)
V	Ra 0.25 µm EP (10 µin)

VALVE VERSION / MAX. WORKING PRESSURE

Valve	Max. working pressure
RX04 (LM) Multiturn handwheel ^{1 2}	20 bar
RX04 (HM) Multiturn handwheel ^{1 2}	240 bar
RX04 (LQ) Quarter turn handwheel ¹	20 bar
RX04 (HQ) Quarter turn handwheel ¹	240 bar
RX04 (BP*) Pneumatically actuated	10 bar
RX04 (LP*) Pneumatically actuated ³	20 bar
RX04 (HP*) Pneumatically actuated ³	240 bar

¹ FT (Panel Mounting) option available

² MSF LOTO option available

³ Position indication switch available

TEMPERATURE RANGE

Seat (Actuation type)	Temperature Range
PCTFE / PVDF (manual & pneumatic*)	-40°C to +65°C (-40°F to +149°F)
Polyimid (manual & pneumatic*)	-40°C to +150°C (-40°F to +302°F)

*-20C° pneumatic versions

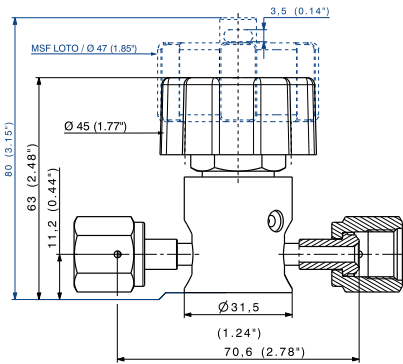
SCAN ME FOR FLOW CURVES & PRODUCT CONFIGURATOR



All specifications and dimensions are subject to change without notice

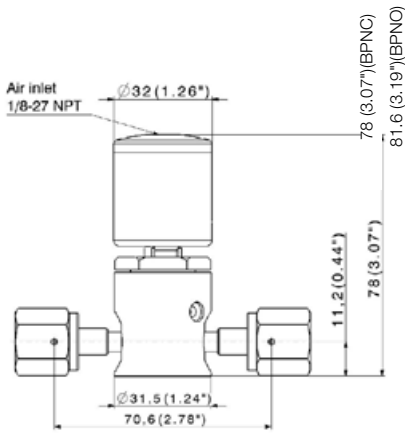
RX04 - High performance UHP line valves

MULTI-TURN VALVE (LM, HM, MSF) WITH OPEN/CLOSE WINDOW



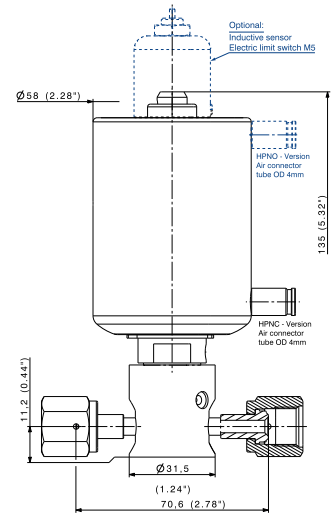
PNEUMATIC VALVE MEDIUM PRESSURE (LPNC, LPNO)

PNEUMATIC VALVE LOW PRESSURE (BPNC, BPNO)

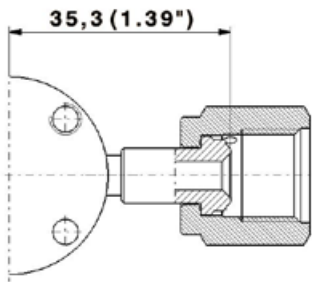
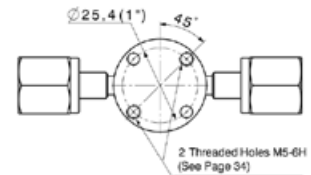
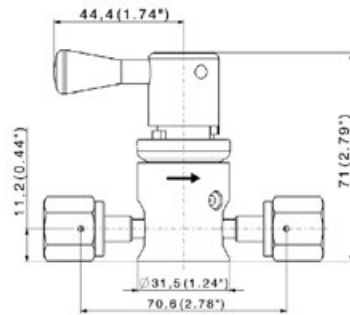
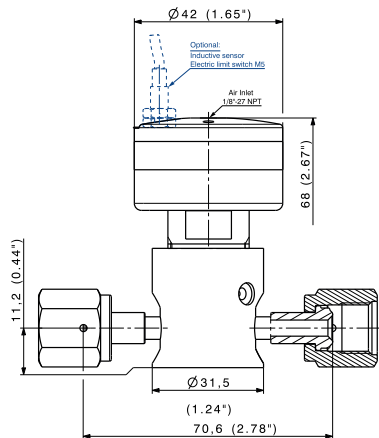


QUARTER-TURN VALVE (LQ, HQ)

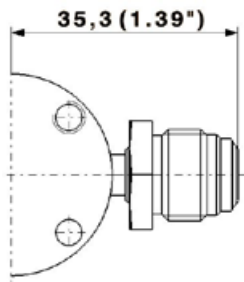
PNEUMATIC VALVE HIGH PRESSURE (HPNC, HPNO)



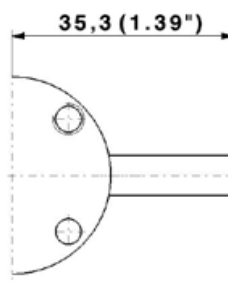
BOTTOM VIEW



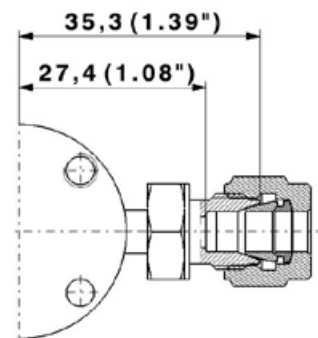
Female (face seal)
Swivel



Male (face seal)
non-Swivel



BWO for
micro-welding head



Compression tube fittings



OPEN/CLOSE INDICATOR

Green - Open
Red - Closed

RX04 - High performance UHP line valves

PRODUCT CONFIGURATOR

	Surface Finish	Max. Delivery Pressure	Porting Configuration ¹	Body Material	Seat Material	End Connection	Options							
RX04	S	LM	2W1	-	K	A/B: B¼								
	Ra 0.4 µm (15 µin)	S	Multi-Turn Handwheel (20bar)	LM	2W1	2W1	SS 316L	-	PCTFE (Kel-F®)	K	Metal face seal ¼" - Female	V ¼ F	Panel Mounting	FT
	Ra 0.25 µm EP (10 µin)	V	Multi-Turn Handwheel (240bar)	HM	2W2	2W2	UHP Material - Semi F20**	A	Polyimid	V	Metal face seal ¼" - Male	V ¼ M	Electric limit switch***	CI
			Pneumatically actuated (10 bar)	BP*	3W4	3W4			PVDF	P	BWO ¼"	B ¼	LOTO	MSF
			Pneumatically actuated (20 bar)	LP*	3W5	3W5					BWO 6 mm	B6	Constant bleed	FPT
			Pneumatically actuated (240 bar)	HP*	3W6	3W6					Compression tube fittings	RDB ¼		
			Quarter-Turn Handwheel (20 bar)	LQ	3W8	3W8					Compression tube fittings	RDB 6		
			Quarter-Turn Handwheel (240 bar)	HQ	3W9	3W9								
					4W10	4W10								
					4W11	4W11								

¹ Check configurations here

* Add NO for normally open or NC for normally closed

** On demand

*** On HP and LP actuators only

All specifications and dimensions are subject to change without notice

RX04F



DIAPHRAGM VALVE

- 100% Helium Leak Test performed
- Assembling, testing & Packaging in cleanroom
- Reverse seat design for high life cycle
- Individual serial number for full traceability
- Electropolished surface
- Fluid specific seat material as standard options
- Low internal volume
- UHP Material - Semi F20 option available
- Multiturn handwheel with open/close indicator
- Loto option
- Pneumatic version available
- Indicative switch option



RX04F - High performance UHP line valves

SPECIFICATIONS

Max. inlet pressure See table below	Pneumatic actuator opening pressure 5 to 7 bar (70 to 100 psig)	Certified max. Helium outboard leak rate $\leq 1 \times 10^{-9}$ mbar.l/s
Temperature range See table below	Nominal seat diameter 4 mm (0,16")	Certified max. Helium across the seat leak rate (at max. pressure) $\leq 1 \times 10^{-9}$ mbar.l/s
Wetted volume < 1.2 cm ³	Flow capacity (Cv) 0.2	Certified max. Helium inboard leak rate (at max. pressure) $\leq 1 \times 10^{-9}$ mbar.l/s
Burst pressure >700 bar (10,150 psig)		

CONSTRUCTION MATERIAL

	Parts	Material
Wetted parts	Body	SS 316L, UHP Material - Semi F20
	Seat	PCTFE, PVDF, Polyimid
	Diaphragm	Phynox®
	Backup diaphragm	Phynox®
Non-wetted parts	Handwheel	Plastic (MT)
	Actuator Body	SS 316L or Aluminium
	Others	Stainless Steel, Alloys, brass

SURFACE FINISH

S	Ra 0.4 µm (15 µin)
V	Ra 0.25 µm EP (10 µin)

VALVE VERSION / MAX. WORKING PRESSURE

Valve	Max. working pressure
RX04-F (LM) Multiturn handwheel	20 bar
RX04-F (HM) Multiturn handwheel	240 bar
RX04-F (BP*) Pneumatically actuated	10 bar
RX04-F (LP*) Pneumatically actuated	20 bar
RX04-F (HP*) Pneumatically actuated	240 bar

TEMPERATURE RANGE

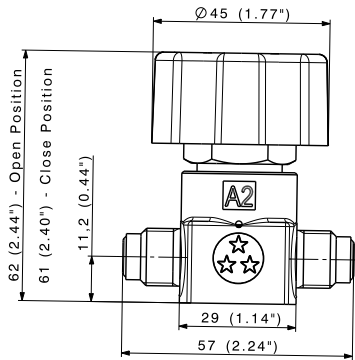
Seat (Actuation type)	Temperature Range
PCTFE / PVDF (manual & pneumatic*)	-40°C to +65°C (-40°F to +149°F)
Polyimid (manual & pneumatic*) *-20°C° pneumatic versions	-40°C to +150°C (-40°F to +302°F)

SCAN ME FOR FLOW CURVES & PRODUCT CONFIGURATOR

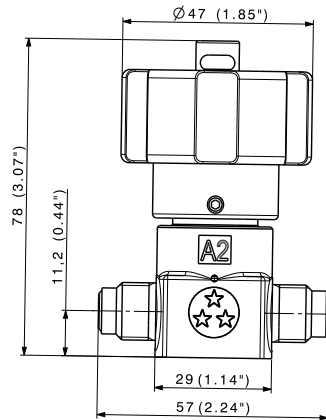


RX04F - High performance UHP line valves

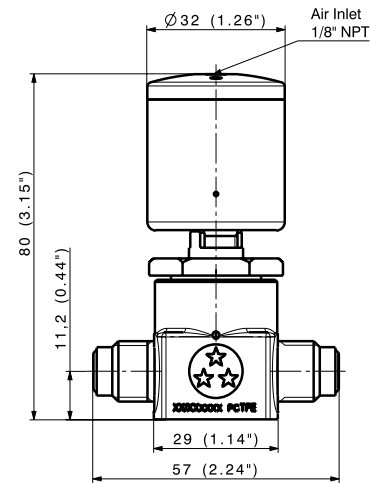
RX04F – MULTI-TURN VALVE (LM, HM) WITH OPEN/CLOSE WINDOW



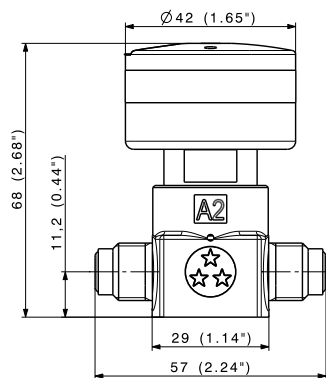
RX04F – MULTI-TURN VALVE (MSF) WITH OPEN/CLOSE WINDOW



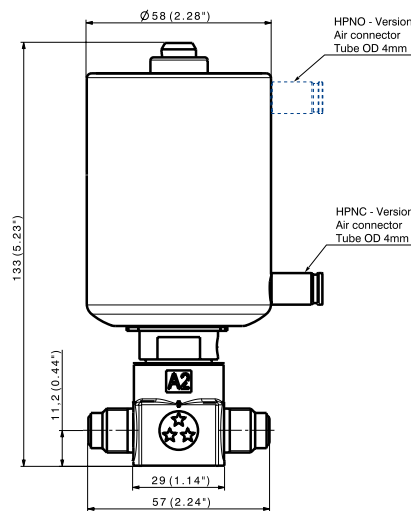
RX04F – PNEUMATIC VALVE LOW PRESSURE (BPNC, BPNO)



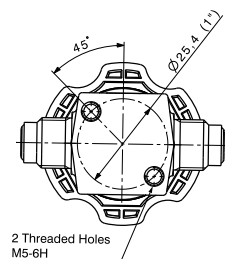
RX04F – PNEUMATIC VALVE MEDIUM PRESSURE (LPNC, LPNO)



RX04F – PNEUMATIC VALVE HIGH PRESSURE (HPNC, HPNO)



RX04F – BOTTOM VIEW



PRODUCT CONFIGURATOR

	Body type	Surface Finish	Max. delivery pressure	Porting Configuration	Body Material	Seat Material	End Connection	Options
RX04	F	S	BP	2W1	-	K	4MI/4MI	
	Forged body	F Ra 0.4 µm (15 µin)	S Multi-Turn Handwheel (20 bar)	LM 2W1 2W1	SS 316L	- PCTFE (Kel-F®)	K Metal face seal ¼" - Male fix	4MI Panel Mounting FT
		V Ra 0.25 µm EP (10 µin)	V Multi-Turn Handwheel (240 bar)	HM	UHP Material - Semi F20**	A Polyimid	V	Electric limit switch*** CI
			Pneumatically actuated (10 bar)	BP*		PVDF	P	LOTO MSF
			Pneumatically actuated (20 bar)	LP*				
			Pneumatically actuated (240 bar)	HP				

* Add NO for normally open or NC for normally closed
 ** On demand
 *** On HP and LP actuators only

RX08



DIAPHRAGM VALVE

- 100% Helium Leak Test performed
- Assembling, testing & Packaging in cleanroom: Class ISO 4
- Reverse seat design for high life cycle
- Individual serial number for full traceability
- Electropolished surface roughness per SEMI F19 UHP Grade
- Fluid specific seat material as standard options
- Low internal volume
- UHP Material - Semi F20 option available
- Additional Multi-port options
- 270° multiturn handwheel with open/close indicator
- Loto option
- Pneumatic version available
- Indicative switch option

RX08 - High performance UHP line valves

SPECIFICATIONS

Max. inlet pressure See table next page	Pneumatic actuator opening pressure 5 to 7 bar (70 to 100 psig)*	Certified max. Helium outboard leak rate $\leq 1 \times 10^{-9}$ mbar.l/s
Temperature range See table next page	Nominal seat diameter 8 mm (0.31")	Certified max. Helium across the seat leak rate (at max. pressure) $\leq 1 \times 10^{-9}$ mbar.l/s
Wetted volume < 1.6 cm ³	Flow capacity (Cv) 0.5	Certified max. Helium inboard leak rate (at max. pressure) $\leq 1 \times 10^{-9}$ mbar.l/s
Burst pressure > 700 bar (10,150 psig)		

CONSTRUCTION MATERIAL

	Parts	Material
Wetted parts	Body	SS 316L, UHP Material - Semi F20
	Seat	PCTFE, PVDF, Polyimid
	Diaphragm	Phynox®
Non-wetted parts	Backup diaphragm	Phynox®
	Handwheel	Aluminium (QT) or Plastic (MT)
	Actuator Body	SS 316L or Aluminium
	Others	Stainless Steel, Alloys, brass

SURFACE FINISH

S	Ra 0.4 µm (15 µin)
V	Ra 0.25 µm EP (10 µin)

VALVE VERSION / MAX. WORKING PRESSURE

Valve	Max. working pressure
RX08 (LM) Multiturn handwheel ^{1 2}	20 bar
RX08 (HM) Multiturn handwheel ^{1 2}	240 bar
RX08 (LQ) Quarter turn handwheel ¹	20 bar
RX08 (HQ) Quarter turn handwheel ¹	240 bar
RX08 (LP) Pneumatically actuated	20 bar
RX08 (HP) Pneumatically actuated ³	240 bar

¹ FT (Panel Mounting) option available
² MSF LOTO option available
³ Position indication switch available

TEMPERATURE RANGE

Seat (Actuation type)	Temperature Range
PCTFE / PVDF (manual & pneumatic*)	-40°C to +65°C (-40°F to +149°F)
Polyimid (manual & pneumatic*)	-40°C to +150°C (-40°F to +302°F)

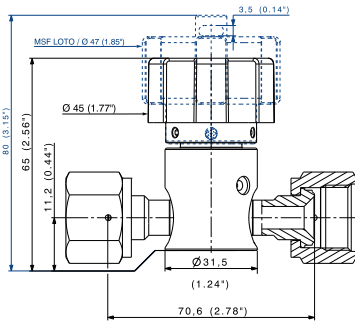
*-20C° pneumatic versions

SCAN ME FOR FLOW CURVES & PRODUCT CONFIGURATOR

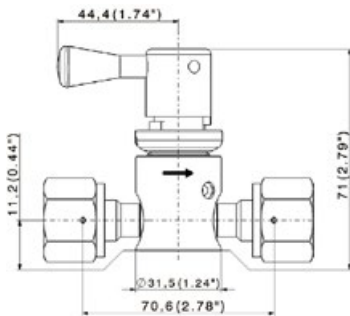


RX08 - High performance UHP line valves

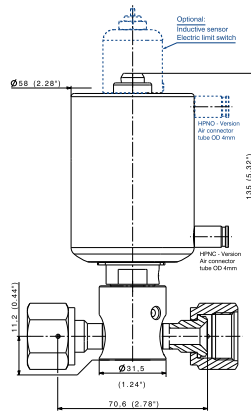
RX08 - MULTI-TURN VALVE (LM, HM, MSF)



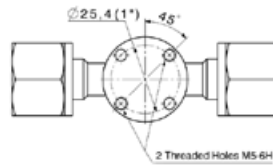
RX08 - QUARTER TURN VALVE (LQ, HQ)



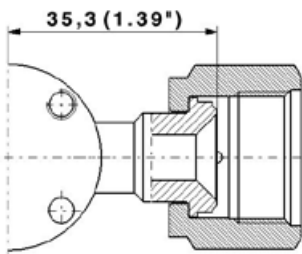
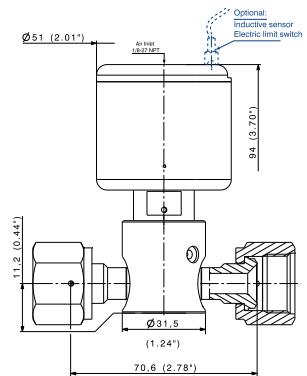
RX08 - PNEUMATIC VALVE HIGH PRESSURE (HPNC, HPNO)



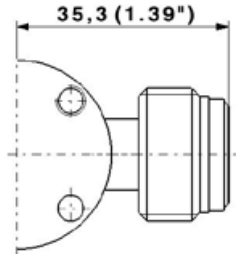
RX08 - BOTTOM VIEW



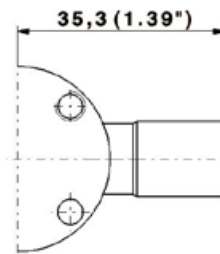
RX08 - PNEUMATIC VALVE (LPNC, LPNO)



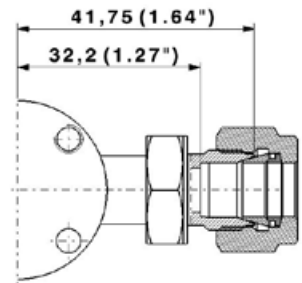
Female (face seal)
Swivel



Male (face seal)
non-Swivel



BWO for
micro-welding head



Compression tube fittings

All specifications and dimensions are subject to change without notice



OPEN/CLOSE INDICATOR

Green - Open
Red - Closed

RX08F



DIAPHRAGM VALVE

- 100% Helium Leak Test performed
- Assembling, testing & Packaging in cleanroom
- Reverse seat design for high life cycle
- Individual serial number for full traceability
- Electropolished surface
- Fluid specific seat material as standard options
- Low internal volume
- UHP Material - Semi F20 option available
- Multiturn handwheel with open/close indicator
- Loto option
- Pneumatic version available
- Indicative switch option

RX08F - High performance UHP line valves

SPECIFICATIONS

Max. inlet pressure See table next page	Pneumatic actuator opening pressure 5 to 7 bar (70 to 100 psig)*	Certified max. Helium outboard leak rate $\leq 1 \times 10^{-9}$ mbar.l/s
Temperature range See table next page	Nominal seat diameter 8 mm (0.31")	Certified max. Helium across the seat leak rate (at max. pressure) $\leq 1 \times 10^{-9}$ mbar.l/s
Wetted volume < 1.6 cm ³	Flow capacity (Cv) 0.5	Certified max. Helium inboard leak rate (at max. pressure) $\leq 1 \times 10^{-9}$ mbar.l/s
Burst pressure > 700 bar (10,150 psig)		

CONSTRUCTION MATERIAL

	Parts	Material
Wetted parts	Body	SS 316L, UHP Material - Semi F20
	Seat	PCTFE, PVDF, Polyimid
	Diaphragm	Phynox®
Non-wetted parts	Backup diaphragm	Phynox®
	Handwheel	Plastic (MT)
	Actuator Body	SS 316L or Aluminium
	Others	Stainless Steel, Alloys, brass

SURFACE FINISH

S	Ra 0.4 µm (15 µin)
V	Ra 0.25 µm EP (10 µin)

VALVE VERSION / MAX. WORKING PRESSURE

Valve	Max. working pressure
RX08F (LM) Multiturn handwheel ^{1 2}	20 bar
RX08F (HM) Multiturn handwheel ^{1 2}	240 bar
RX08F (LP) Pneumatically actuated	20 bar
RX08F (HP) Pneumatically actuated	240 bar

¹ FT (Panel Mounting) option available

² MSF LOTO option available

³ Position indication switch available

TEMPERATURE RANGE

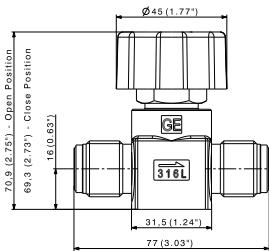
Seat (Actuation type)	Temperature Range
PCTFE / PVDF (manual & pneumatic*)	-40°C to +65°C (-40°F to +149°F)
Polyimid (manual & pneumatic*)	-40°C to +150°C (-40°F to +302°F)
*-20°C° pneumatic versions	

SCAN ME FOR FLOW CURVES & PRODUCT CONFIGURATOR

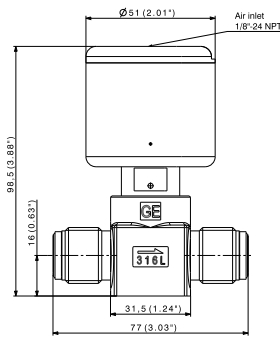


RX08F - High performance UHP line valves

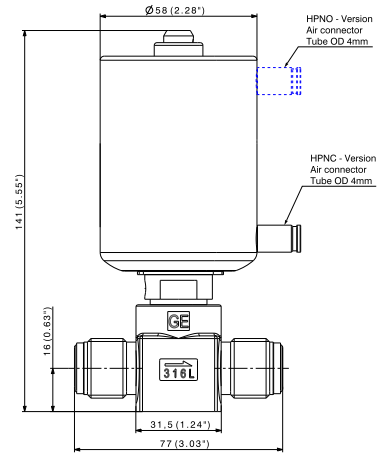
RX08F – MULTI-TURN VALVE (LM, HM) WITH OPEN/CLOSE WINDOW



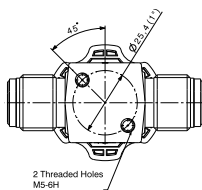
RX08F – PNEUMATIC VALVE MEDIUM PRESSURE (LPNC, LPNO)



RX08F - PNEUMATIC VALVE HIGH PRESSURE (HPNC, HPNO)



RX08F - BOTTOM VIEW



PRODUCT CONFIGURATOR

	Body type	Surface Finish	Max. Delivery Pressure	Porting Configuration	Body Material	Seat Material	End Connection	Options						
RX08	F	S	LM	2W1	-	K	6MI6MI							
	Forged body	F Ra 0.4 µm (15 µin)	S Multi-Turn Handwheel (20 bar)	LM	2W1	2W1	SS 316L	-	PCTFE (Kel-F®)	K	Metal face seal 3/8" - Male fix	6MI	Panel Mounting	FT
		V Ra 0.25 µm EP (10 µin)	V Multi-Turn Handwheel (240 bar)	HM			UHP Material - Semi F20**	A	Polyimid	V			Electric limit switch***	CI
			Pneumatically (20 bar)	LP*					PVDF	P			LOTO	MSF
			Pneumatically (240 bar)	HP*										

* Add NO for normally open or NC for normally closed
 ** On demand
 *** On HP and LP actuators only

All specifications and dimensions are subject to change without notice

RX12



DIAPHRAGM VALVE

- 100% Helium Leak Test performed
- Available in sizes 1/2" to 3/4" to support a wide range of connections
- Assembling, testing & Packaging in cleanroom: Class ISO 4
- Individual serial number for full traceability
- Electropolished surface roughness per SEMI F19 UHP Grade
- UHP Material - Semi F20 option available
- Excellent purgeability due to optional purge ports
- Fluid specific seat material as standard options
- Replaceable seat



RX12 - High performance UHP line valves

SPECIFICATIONS

Max. inlet pressure See table next page	Pneumatic actuator opening pressure 5 to 7 bar (70 to 100 psig)	Certified max. Helium outboard leak rate $\leq 1 \times 10^{-9}$ mbar.l/s
Temperature range See table next page	Nominal seat diameter 12 mm (0.47")	Certified max. Helium across the seat leak rate (at max. pressure) $\leq 1 \times 10^{-9}$ mbar.l/s
Wetted volume < 7 cm ³	Flow capacity (Cv) 1.75	Certified max. Helium inboard leak rate (at max. pressure) $\leq 1 \times 10^{-9}$ mbar.l/s
Burst pressure > 700 bar (10,150 psig)		

CONSTRUCTION MATERIAL

	Parts	Material
Wetted parts	Body	SS 316L, UHP Material - Semi F20
	Seat	PCTFE, PVDF, Polyimid
	Diaphragm	Phynox®
Non-wetted parts	Backup diaphragm	Phynox®
	Handwheel	Aluminium
	Actuator Body	Aluminium
	Others	Stainless Steel, Alloys, Brass

SURFACE FINISH

S	Ra 0.4 µm (15 µin)
V	Ra 0.25 µm EP (10 µin)
U	Ra 0.13 µm EP (5 µin)

VALVE VERSION / MAX. WORKING PRESSURE

Valve	Max. working pressure
RX12 (MT) Multiturn handwheel	15 bar
RX12 (PP2) Pneumatically actuated	15 bar

TEMPERATURE RANGE

Seat (Actuation type)	Temperature Range
PCTFE / PVDF (manual & pneumatic*)	-40°C to +65°C (-40°F to +149°F)
Polyimid (manual & pneumatic*)	-40°C to +150°C (-40°F to +302°F)

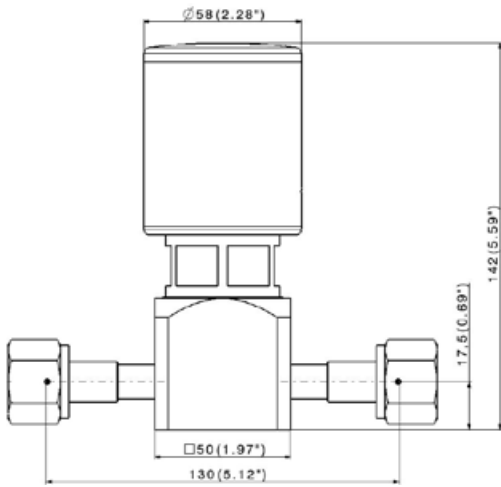
*-20C° pneumatic versions

SCAN ME FOR FLOW CURVES & PRODUCT CONFIGURATOR

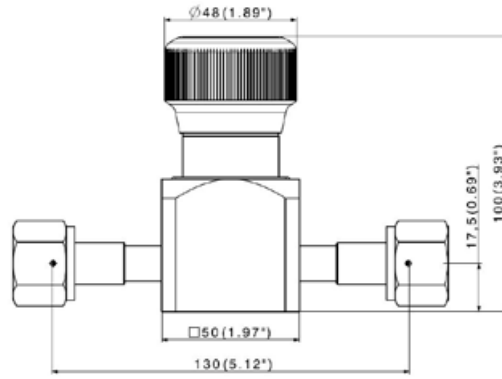


RX12 - High performance UHP line valves

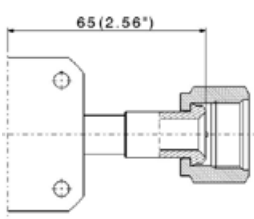
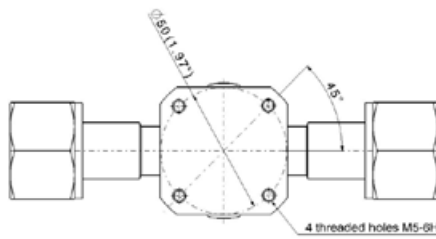
RX12 - PNEUMATIC VALVE (PP2NC, PP2NO)



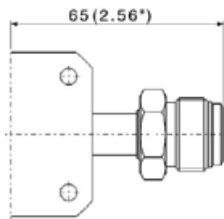
RX12 - MULTI-TURN VALVE (MT)



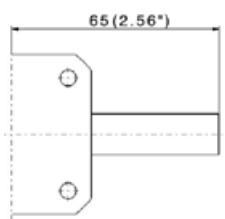
RX12-BOTTOM VIEW



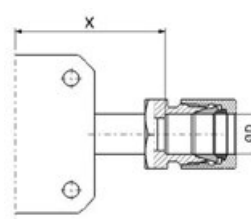
Female (face seal)
Swivel



Male (face seal)
Swivel



BWO
for micro-welding head



Compression tube fittings

ØD	X
12mm	47,5
18mm	50
1/2"	47,5
3/4"	50

All specifications and dimensions are subject to change without notice

RX12 - High performance UHP line valves

PRODUCT CONFIGURATOR

	Surface Finish		Actuation		Porting Configuration		Body Material		Seat Material		End Connection		Options	
RX12	S		MT		2W1		I		K		A/B: B½		-	
	Ra 0.4 µm (15 µin)	S	Multi-Turn Handwheel (15 bar)	MT	2 ports in line	2W1	SS 316L	I	PCTFE (Kel-F®)	K	Metal face seal ½" - Female	V ½ F	Electric limit switch***	CI
	Ra 0.25 µm EP (10 µin)	V	Pneumatically actuated (15 bar)	PP2*	2 Ports in line, upstream purge port - left side	2 WPEG	Hastelloy®**	H	Polyimid	V	Metal face seal ½" - Male	V ½ M		
	Ra 0.13 µm EP (5 µin)**	U			2 Ports in line, downstream purge port - left side	2 WPSG	UHP Material - Semi F20	A	PVDF	P	Metal face seal ¾" - Female	V¾F		
					2 Ports in line, 2 purge ports upstream/ Downstream - left side	2 W1p2					Metal face seal ¾" - Male	V¾ M		
					2 ports in line, full passage, downstream branch	3WT					BWO ½"	B ½		
					2 ports in line, full passage, downstream branch, downstream purge port	3 WTPS					BWO ¼"	B ¼		
											Compression tube fittings	RDB 12		
											Compression tube fittings	RDB ¾		
											Compression tube fittings	RDB 18		

* Add NO for normally open or NC for normally closed

** On demand

*** For pneumatic actuators only

RX20



DIAPHRAGM VALVE

- 100% Helium Leak Test performed
- Available in sizes 3/4" to 1" to support a wide range of connections
- Assembling, testing & Packaging in cleanroom: Class ISO 4
- Individual serial number for full traceability
- Electropolished surface roughness per SEMI F19 UHP Grade
- UHP Material - Semi F20 option available
- Excellent purgeability due to optional purge ports
- Fluid specific seat material as standard options
- Replaceable seat

RX20 - High performance UHP line valves

SPECIFICATIONS

Max. inlet pressure See table next page	Pneumatic actuator opening pressure 5 to 7 bar (70 to 100 psig)	Certified max. Helium outboard leak rate $\leq 1 \times 10^{-9}$ mbar.l/s
Temperature range See table next page	Nominal seat diameter 20 mm (0.79")	Certified max. Helium across the seat leak rate (at max. pressure) $\leq 1 \times 10^{-9}$ mbar.l/s
Flow capacity (Cv) 3.5	Burst pressure > 700 bar (10,150 psig)	Certified max. Helium inboard leak rate (at max. pressure) $\leq 1 \times 10^{-9}$ mbar.l/s

CONSTRUCTION MATERIAL

	Parts	Material
Wetted parts	Body	SS 316L, UHP Material - Semi F20
	Seat	PCTFE, PVDF, Polyimid
	Diaphragm	Phynox®
Non-wetted parts	Backup diaphragm	Phynox®
	Handwheel	Aluminium
	Actuator Body	Aluminium, Stainless Steel
	Others	Stainless Steel, Alloys, Brass

SURFACE FINISH

S	Ra 0.4 µm (15 µin)
V	Ra 0.25 µm EP (10 µin)
U	Ra 0.13 µm EP (5 µin)

VALVE VERSION / MAX. WORKING PRESSURE

Valve	Max. working pressure
RX20 (MT) Multiturn handwheel	15 bar
RX20 (PP2) Pneumatically actuated	15 bar

TEMPERATURE RANGE

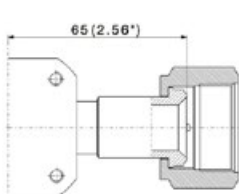
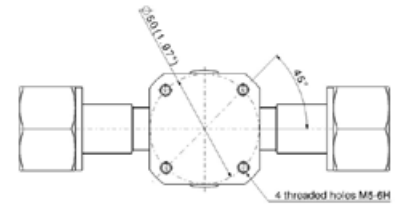
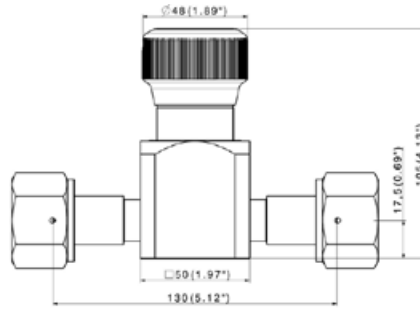
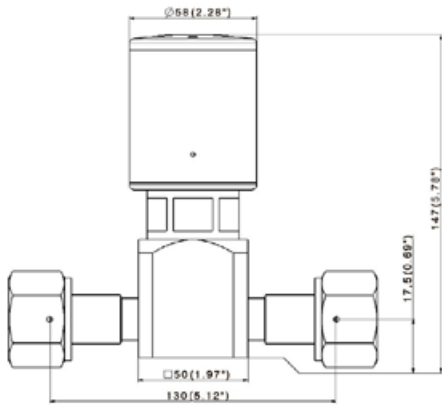
Seat (Actuation type)	Temperature Range
PCTFE / PVDF (manual & pneumatic)	-20°C to +65°C (-40°F to +149°F)
Polyimid (manual & pneumatic)	-20°C to +150°C (-40°F to +302°F)

RX20 - High performance UHP line valves

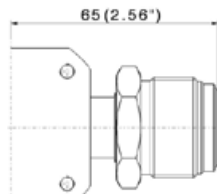
RX20 - PNEUMATIC VALVE (PP2NC, PP2NO)

RX20 - MULTI-TURN VALVE (MT)

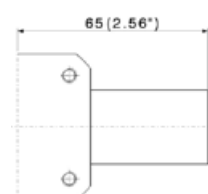
RX20-BOTTOM VIEW



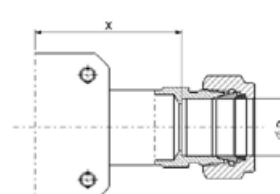
Female (face seal)
Swivel



Male (face seal)
Swivel



BWO for micro-welding
head



Compression tube fittings

ØD	X
3/4"	49,3
1"	46

PRODUCT CONFIGURATOR

	Surface Finish	Actuation	Porting Configuration	Body Material	Seat Material	End Connection	Options
RX20	S	MT	2W1	I	K	a/b: B $\frac{3}{4}$	-
	Ra 0.4 µm (15 µin)	S Multi-Turn Handwheel (15 bar)	MT 2 ports in line	SS 316L	I PCTFE (Kel-F®)	K Metal face seal ¾" - Female	V ¾ F Electric limit switch***
	Ra 0.25 µm EP (10 µin)	V Pneumatically actuated (15 bar)	PP2* 2 Ports in line, upstream purge port - left side	Hastelloy®**	H Polyimid	V Metal face seal ¾" - Male	V ¾ M
	Ra 0.13 µm EP (5 µin)*	U	2 Ports in line, downstream purge port - left side	2 WPEG	UHP Material - Semi F20	A PVDF	P BWO ¾" (Butt Orbital Weld)
			2 Ports in line, 2 purge ports up-/downstream-left side	2 W1p2			BWO 1" (Butt Orbital Weld)
							B 1
							Metal face seal 1" - Male
							V1M
							Metal face seal 1" - Female
							V1F
							Compression tube fittings ¾
							RDB
							Compression tube fittings
							RDB1"

* Add NO for normally open or NC for normally closed

** On demand

*** For pneumatic actuators only

All specifications and dimensions are subject to change without notice

Metalgangen 13
DK-2690 Karlslunde
Denmark
Phone (+45) 73 84 12 30
info@pgflowteknik.dk
www.pgflowteknik.dk

