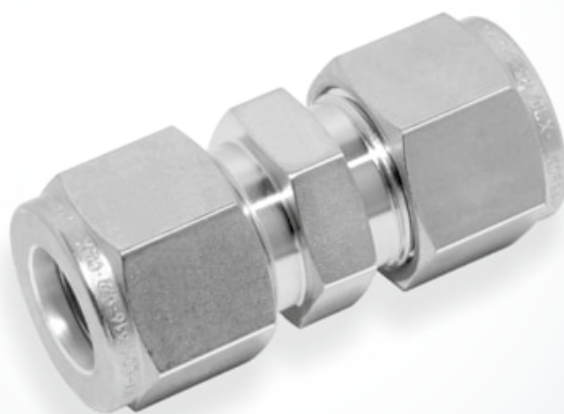


CUA

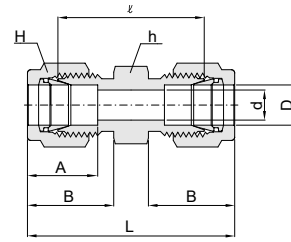
Union tube Fittings

Hy-Lok



CUA Union tube Fittings

All dimensions are in millimeters unless otherwise specified.
Dimensions are for reference only, subject to change.



Connects Fractional Tubes

PartNo.	TubeOD		d.Min	Width across flat(in.)		A	B	L	L
	D	D'		h	H				
	In.	mm							
CUA-1	1/16	1.58	1.3	5/16	5/16	8.6	10.9	17.5	25.2
CUA-2	1/8	3.17	2.3	7/16	7/16	12.7	15.2	22.4	35.6
CUA-3	3/16	4.76	3.0	7/16	1/2	13.7	16.0	24.1	37.3
CUA-4	1/4	6.35	4.8	1/2	9/16	15.2	17.8	26.2	40.9
CUA-5	5/16	7.93	6.3	9/16	5/8	16.3	18.5	28.2	42.9
CUA-6	3/8	9.52	7.0	5/8	11/16	16.8	19.3	30.2	45.0
CUA-8	1/2	12.70	10.4	13/16	7/8	22.9	21.8	31.0	51.3
CUA-10	5/8	15.87	12.7	15/16	1	24.4	21.8	31.8	52.1
CUA-12	3/4	19.05	15.7	1-1/16	1-1/8	24.4	21.8	33.3	53.6
CUA-14	7/8	22.22	18.3	1-3/16	1-1/4	25.9	21.8	35.1	55.4
CUA-16	1	25.40	22.3	1-3/8	1-1/2	31.2	26.4	40.4	64.8
CUA-20	1 1/4	31.75	28.0	1-3/4	1-7/8	41.1	38.9	48.0	92.2
CUA-24	1 1/2	38.10	34.0	2-1/8	2-1/4	50.0	45.2	53.6	108.0
CUA-32	2	50.80	46.0	2-3/4	3	67.6	62.7	74.7	149.4

Connects Metric Tubes

Part No.	Tube OD	d. Min	Width across flat (in.)		A	B	L	L
			h	H				
CUA-2M	2	1.7	7/16 in.	12	12.9	15.3	22.4	35.6
CUA-3M	3	2.3	7/16 in.	12	12.9	15.3	22.1	35.3
CUA-4M	4	2.4	7/16 in.	12	13.7	16.1	24.1	37.3
CUA-6M	6	4.8	1/2 in.	14	15.3	17.7	26.2	41.0
CUA-8M	8	6.3	14	16	16.2	18.6	28.2	43.2
CUA-10M	10	8.0	17	19	17.2	19.5	31.0	46.2
CUA-12M	12	9.5	13/16 in.	22	22.8	22.0	31.0	51.2
CUA-15M	15	12.0	24	25	24.4	22.0	31.8	52.0
CUA-16M	16	12.7	24	25	24.4	22.0	31.8	52.0
CUA-18M	18	15.0	27	30	24.4	22.0	33.3	53.5
CUA-20M	20	16.0	30	32	26.0	22.0	34.8	55.0
CUA-22M	22	18.3	30	32	26.0	22.0	34.8	55.0
CUA-25M	25	22.0	35	38	31.3	26.5	40.4	65.0
CUA-28M	28	23.0	41	46	36.6	36.6	43.4	85.0
CUA-32M	32	28.0	46	50	42.0	41.6	51.3	97.3
CUA-38M	38	34.0	55	60	49.4	47.9	58.4	113.6
CUA-42M	42	36.0	55	65	55.1	53.6	64.0	126.2
CUA-50M	50	45.0	70	3 in.	65.0	61.0	71.7	146.0