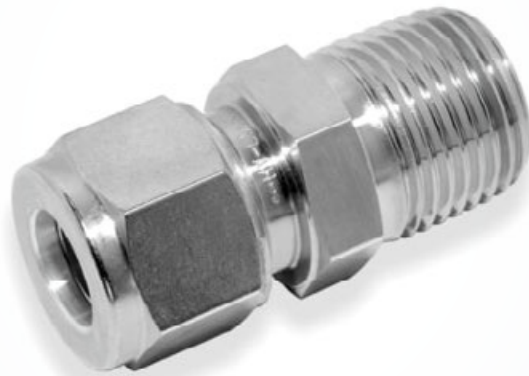


CMC-R

Male Connector Fittings

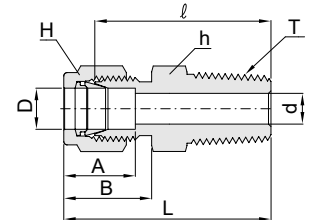
Hy-Lok



CMC-R Male Connector Fittings

Connects Metric Tube to Female ISO tapered thread

PartNo.	Tube OD	T* ISO Thread Size	d+ Min	Width across flat (in.)		A	B	L	L
				h	H				
CMC2M-2R	2	1/8	1.7	7/16 in.	12	12.9	15.3	23.9	30.5
CMC3M-2R	3	1/8	2.3	7/16 in.	12	12.9	15.3	23.9	30.5
CMC3M-4R	3	1/4	2.3	14	12	12.9	15.3	29.0	35.6
CMC4M-2R	4	1/8	2.4	7/16 in.	12	13.7	16.1	24.6	31.2
CMC4M-4R	4	1/4	2.4	14	12	13.7	16.1	29.7	36.3
CMC6M-2R	6	1/8	4.8	1/2 in.	14	15.3	17.7	25.4	32.8
CMC6M-4R	6	1/4	4.8	14	14	15.3	17.7	30.5	37.9
CMC6M-6R	6	3/8	4.8	17	14	15.3	17.7	31.0	38.4
CMC6M-8R	6	1/2	4.8	22	14	15.3	17.7	37.3	44.7
CMC8M-2R	8	1/8	4.8	14	16	16.2	18.6	26.7	34.2
CMC8M-4R	8	1/4	6.3	14	16	16.2	18.6	31.2	38.7
CMC8M-6R	8	3/8	6.3	17	16	16.2	18.6	31.8	39.2
CMC8M-8R	8	1/2	6.3	22	16	16.2	18.6	38.1	45.6
CMC10M-2R	10	1/8	4.8	17	19	17.2	19.5	28.7	36.3
CMC10M-4R	10	1/4	7.0	17	19	17.2	19.5	33.3	40.9
CMC10M-6R	10	3/8	8.0	17	19	17.2	19.5	33.3	40.9
CMC10M-8R	10	1/2	8.0	22	19	17.2	19.5	38.9	46.5
CMC12M-4R	12	1/4	7.0	13/16 in.	22	22.8	22.0	33.3	43.4
CMC12M-6R	12	3/8	9.5	13/16 in.	22	22.8	22.0	33.3	43.4
CMC12M-8R	12	1/2	9.5	22	22	22.8	22.0	38.9	49.0
CMC12M-12R	12	3/4	9.5	27	22	22.8	22.0	40.4	50.5
CMC15M-8R	15	1/2	12.0	24	25	24.4	22.0	38.9	49.0
CMC16M-4R	16	1/4	7.0	24	25	24.4	22.0	34.0	44.1
CMC16M-6R	16	3/8	9.5	24	25	24.4	22.0	34.0	44.1
CMC16M-8R	16	1/2	12.0	24	25	24.4	22.0	38.9	49.0
CMC16M-12R	16	3/4	12.7	27	25	24.4	22.0	40.4	49.0
CMC18M-8R	18	1/2	12.0	27	30	24.4	22.0	40.4	50.5
CMC18M-12R	18	3/4	15.0	27	30	24.4	22.0	40.4	50.5
CMC20M-8R	20	1/2	12.0	30	32	26.0	22.0	42.2	52.3
CMC20M-12R	20	3/4	15.7	30	32	26.0	22.0	42.2	52.3
CMC22M-12R	22	3/4	15.7	30	32	26.0	22.0	42.2	52.3
CMC22M-16R	22	1	18.3	35	32	26.0	22.0	47.0	57.0
CMC25M-12R	25	1	15.7	35	38	31.3	26.5	45.2	57.5
CMC25M-16R	25	3/4	22.0	35	38	31.3	26.5	50.0	62.3
CMC28M-16R	28	1 1/4	21.8	41	46	36.6	36.6	51.6	72.4
CMC28M-20R	28	1-1/4	23.0	46	46	36.6	36.6	52.3	73.1
CMC32M-20R	32	1-1/4	28.0	46	50	42.0	41.6	56.6	79.6
CMC32M-24R	32	1-1/2	28.0	50	50	49.4	47.9	58.1	91.6



*NPT Threads are available upon request.

+The d dimension is the minimum nominal opening. These fittings may have a larger opening at the pipe/straight thread end.

All dimensions are in millimeters unless otherwise specified. Dimensions are for reference only, subject to change.

CMC-T Thermo- couple Male Connector Fittings

Bore-through male connectors handle thermocouples or dip tubes with ease. For correct part number, just add "T" as a suffix to CMC, the male connector designator. Example : CMCT 12M-8R-S316 12mm tube O.D. x 1/2" ISO tapered stainless Steel 316 CMCT 8-8N-S316 1/2" tube O.D. x 1/2" NPT stainless steel 316. Note : There are some limitations in size available as it is impractical to bore through all male connectors. For availability, contact your local distributor.

